

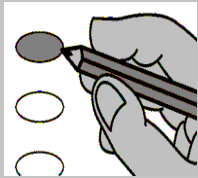
A Precinct 1 B State of Kansas C Douglas County

Instructions to Voter

Notice: If you tear, deface or make a mistake and wrongfully mark any ballot, you must return it to the election board and receive a new ballot or set of ballots.

To vote for a person darken the oval at the left of the person's name. To vote for a person whose name is not printed on the ballot, write the person's name in the blank space and darken the oval to the left.

To vote you must darken the oval completely



USD OFFICES

USD 497 School Board Member At-Large Vote for Three or Fewer

MUNICIPAL OFFICES

Lawrence City Commision Vote for Three or Fewer

Lance Johnson Lawrence

Tom Johnson Lawrence

Gwendolyn Klingenberg Lawrence

Mike Amyx Lawrence

Price T. Banks Lawrence

James Bush Lawrence

Aron Cromwell Lawrence

Dennis D. Constance Lawrence

Write-in

Write-in

Write-in

Michael L. Pomes Lawrence

Michael Riley Lawrence

Vanessa Sanburn Lawrence

Mark F. Bradford Lawrence

Robert Byers Lawrence

Tom Hartley Lawrence

Thom Hepford Lawrence

John W. Mitchell Lawrence

Write-in

Write-in

Write-in

A Precinct 1 B Typ:01 Seq:0001 Spl:01 C

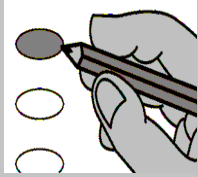
A Precinct 2 B State of Kansas C Douglas County

Instructions to Voter

Notice: If you tear, deface or make a mistake and wrongfully mark any ballot, you must return it to the election board and receive a new ballot or set of ballots.

To vote for a person darken the oval at the left of the person's name. To vote for a person whose name is not printed on the ballot, write the person's name in the blank space and darken the oval to the left.

To vote you must darken the oval completely



USD OFFICES

USD 497 School Board Member At-Large Vote for Three or Fewer

MUNICIPAL OFFICES

Lawrence City Commision Vote for Three or Fewer

Lance Johnson Lawrence

Tom Johnson Lawrence

Gwendolyn Klingenberg Lawrence

Mike Amyx Lawrence

Price T. Banks Lawrence

James Bush Lawrence

Aron Cromwell Lawrence

Dennis D. Constance Lawrence

Write-in

Write-in

Write-in

John W. Mitchell Lawrence

Michael L. Pomes Lawrence

Michael Riley Lawrence

Vanessa Sanburn Lawrence

Mark F. Bradford Lawrence

Robert Byers Lawrence

Tom Hartley Lawrence

Thom Hepford Lawrence

Write-in

Write-in

Write-in

A Precinct 2 B Typ:01 Seq:0002 Spl:01 C

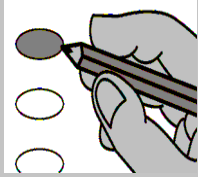
A Precinct 3 B State of Kansas C Douglas County

Instructions to Voter

! Notice: If you tear, deface or make a mistake and wrongfully mark any ballot, you must return it to the election board and receive a new ballot or set of ballots.

➔ To vote for a person darken the oval at the left of the person's name. To vote for a person whose name is not printed on the ballot, write the person's name in the blank space and darken the oval to the left.

To vote you must darken the oval completely



USD OFFICES

USD 497 School Board Member
At-Large
Vote for Three or Fewer

MUNICIPAL OFFICES

Lawrence City Commision
Vote for Three or Fewer

Dennis D. Constance
Lawrence

Lance Johnson
Lawrence

Tom Johnson
Lawrence

Gwendolyn Klingenberg
Lawrence

Mike Amyx
Lawrence

Price T. Banks
Lawrence

James Bush
Lawrence

Aron Cromwell
Lawrence

Write-in

Write-in

Write-in

Tom Hartley
Lawrence

Thom Hepford
Lawrence

John W. Mitchell
Lawrence

Michael L. Pomes
Lawrence

Michael Riley
Lawrence

Vanessa Sanburn
Lawrence

Mark F. Bradford
Lawrence

Robert Byers
Lawrence

Write-in

Write-in

Write-in

A Precinct 3 B Typ:01 Seq:0003 Spl:01 C

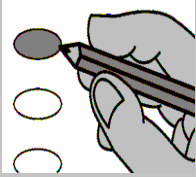
A Precinct 4 B State of Kansas C Douglas County

Instructions to Voter

Notice: If you tear, deface or make a mistake and wrongfully mark any ballot, you must return it to the election board and receive a new ballot or set of ballots.

To vote for a person darken the oval at the left of the person's name. To vote for a person whose name is not printed on the ballot, write the person's name in the blank space and darken the oval to the left.

To vote you must darken the oval completely



USD OFFICES

USD 497 School Board Member At-Large Vote for Three or Fewer

MUNICIPAL OFFICES

Lawrence City Commision Vote for Three or Fewer

Dennis D. Constance Lawrence

Lance Johnson Lawrence

Tom Johnson Lawrence

Gwendolyn Klingenberg Lawrence

Mike Amyx Lawrence

Price T. Banks Lawrence

James Bush Lawrence

Aron Cromwell Lawrence

Write-in

Write-in

Write-in

John W. Mitchell Lawrence

Michael L. Pomes Lawrence

Michael Riley Lawrence

Vanessa Sanburn Lawrence

Mark F. Bradford Lawrence

Robert Byers Lawrence

Tom Hartley Lawrence

Thom Hepford Lawrence

Write-in

Write-in

Write-in

A Precinct 4 B Typ:01 Seq:0004 Spl:01 C

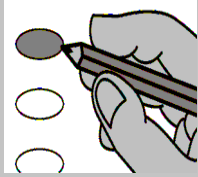
A Precinct 5 B State of Kansas C Douglas County

Instructions to Voter

Notice: If you tear, deface or make a mistake and wrongfully mark any ballot, you must return it to the election board and receive a new ballot or set of ballots.

To vote for a person darken the oval at the left of the person's name. To vote for a person whose name is not printed on the ballot, write the person's name in the blank space and darken the oval to the left.

To vote you must darken the oval completely



USD OFFICES

USD 497 School Board Member At-Large Vote for Three or Fewer

MUNICIPAL OFFICES

Lawrence City Commision Vote for Three or Fewer

James Bush Lawrence

Aron Cromwell Lawrence

Dennis D. Constance Lawrence

Lance Johnson Lawrence

Tom Johnson Lawrence

Gwendolyn Klingenberg Lawrence

Mike Amyx Lawrence

Price T. Banks Lawrence

Write-in

Write-in

Write-in

Vanessa Sanburn Lawrence

Mark F. Bradford Lawrence

Robert Byers Lawrence

Tom Hartley Lawrence

Thom Hepford Lawrence

John W. Mitchell Lawrence

Michael L. Pomes Lawrence

Michael Riley Lawrence

Write-in

Write-in

Write-in

A Precinct 5 B Typ:01 Seq:0005 Spl:01 C

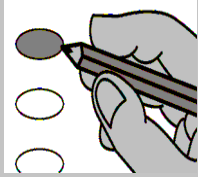
A Precinct 6 B State of Kansas C Douglas County

Instructions to Voter

Notice: If you tear, deface or make a mistake and wrongfully mark any ballot, you must return it to the election board and receive a new ballot or set of ballots.

To vote for a person darken the oval at the left of the person's name. To vote for a person whose name is not printed on the ballot, write the person's name in the blank space and darken the oval to the left.

To vote you must darken the oval completely



USD OFFICES

USD 497 School Board Member At-Large Vote for Three or Fewer

MUNICIPAL OFFICES

Lawrence City Commision Vote for Three or Fewer

Gwendolyn Klingenberg Lawrence

Mike Amyx Lawrence

Price T. Banks Lawrence

James Bush Lawrence

Aron Cromwell Lawrence

Dennis D. Constance Lawrence

Lance Johnson Lawrence

Tom Johnson Lawrence

Write-in

Write-in

Write-in

Vanessa Sanburn Lawrence

Mark F. Bradford Lawrence

Robert Byers Lawrence

Tom Hartley Lawrence

Thom Hepford Lawrence

John W. Mitchell Lawrence

Michael L. Pomes Lawrence

Michael Riley Lawrence

Write-in

Write-in

Write-in

A Precinct 6 B Typ:01 Seq:0006 Spl:01 C

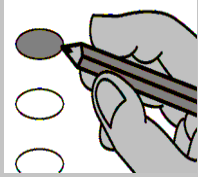
A Precinct 7 B State of Kansas C Douglas County

Instructions to Voter

Notice: If you tear, deface or make a mistake and wrongfully mark any ballot, you must return it to the election board and receive a new ballot or set of ballots.

To vote for a person darken the oval at the left of the person's name. To vote for a person whose name is not printed on the ballot, write the person's name in the blank space and darken the oval to the left.

To vote you must darken the oval completely



USD OFFICES

USD 497 School Board Member At-Large Vote for Three or Fewer

MUNICIPAL OFFICES

Lawrence City Commision Vote for Three or Fewer

Tom Johnson Lawrence

Gwendolyn Klingenberg Lawrence

Mike Amyx Lawrence

Price T. Banks Lawrence

James Bush Lawrence

Aron Cromwell Lawrence

Dennis D. Constance Lawrence

Lance Johnson Lawrence

Write-in

Write-in

Write-in

Robert Byers Lawrence

Tom Hartley Lawrence

Thom Hepford Lawrence

John W. Mitchell Lawrence

Michael L. Pomes Lawrence

Michael Riley Lawrence

Vanessa Sanburn Lawrence

Mark F. Bradford Lawrence

Write-in

Write-in

Write-in

A Precinct 7 B Typ:01 Seq:0007 Spl:01 C

A Precinct 8 B State of Kansas C Douglas County

Instructions to Voter

! Notice: If you tear, deface or make a mistake and wrongfully mark any ballot, you must return it to the election board and receive a new ballot or set of ballots.

➔ To vote for a person darken the oval at the left of the person's name. To vote for a person whose name is not printed on the ballot, write the person's name in the blank space and darken the oval to the left.



USD OFFICES

USD 497 School Board Member
At-Large
Vote for Three or Fewer

MUNICIPAL OFFICES

Lawrence City Commision
Vote for Three or Fewer

Price T. Banks Lawrence

James Bush Lawrence

Aron Cromwell Lawrence

Dennis D. Constance Lawrence

Lance Johnson Lawrence

Tom Johnson Lawrence

Gwendolyn Klingenberg Lawrence

Mike Amyx Lawrence

Write-in

Write-in

Write-in

Robert Byers Lawrence

Tom Hartley Lawrence

Thom Hepford Lawrence

John W. Mitchell Lawrence

Michael L. Pomes Lawrence

Michael Riley Lawrence

Vanessa Sanburn Lawrence

Mark F. Bradford Lawrence

Write-in

Write-in

Write-in

A Precinct 8 B Typ:01 Seq:0008 Spl:01 C

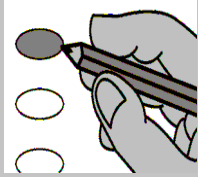
A Precinct 9 B State of Kansas C Douglas County

Instructions to Voter

Notice: If you tear, deface or make a mistake and wrongfully mark any ballot, you must return it to the election board and receive a new ballot or set of ballots.

To vote for a person darken the oval at the left of the person's name. To vote for a person whose name is not printed on the ballot, write the person's name in the blank space and darken the oval to the left.

To vote you must darken the oval completely



USD OFFICES

USD 497 School Board Member At-Large Vote for Three or Fewer

MUNICIPAL OFFICES

Lawrence City Commision Vote for Three or Fewer

Mike Amyx Lawrence

Price T. Banks Lawrence

James Bush Lawrence

Aron Cromwell Lawrence

Dennis D. Constance Lawrence

Lance Johnson Lawrence

Tom Johnson Lawrence

Gwendolyn Klingenberg Lawrence

Write-in

Write-in

Write-in

Mark F. Bradford Lawrence

Robert Byers Lawrence

Tom Hartley Lawrence

Thom Hepford Lawrence

John W. Mitchell Lawrence

Michael L. Pomes Lawrence

Michael Riley Lawrence

Vanessa Sanburn Lawrence

Write-in

Write-in

Write-in

A Precinct 9 B Typ:01 Seq:0009 Spl:01 C

A Precinct 10 B State of Kansas C Douglas County

Instructions to Voter

Notice: If you tear, deface or make a mistake and wrongfully mark any ballot, you must return it to the election board and receive a new ballot or set of ballots.

To vote for a person darken the oval at the left of the person's name. To vote for a person whose name is not printed on the ballot, write the person's name in the blank space and darken the oval to the left.



To vote you must darken the oval completely

USD OFFICES

USD 497 School Board Member At-Large Vote for Three or Fewer

MUNICIPAL OFFICES

Lawrence City Commision Vote for Three or Fewer

Price T. Banks Lawrence

James Bush Lawrence

Aron Cromwell Lawrence

Dennis D. Constance Lawrence

Lance Johnson Lawrence

Tom Johnson Lawrence

Gwendolyn Klingenberg Lawrence

Mike Amyx Lawrence

Write-in

Write-in

Write-in

Mark F. Bradford Lawrence

Robert Byers Lawrence

Tom Hartley Lawrence

Thom Hepford Lawrence

John W. Mitchell Lawrence

Michael L. Pomes Lawrence

Michael Riley Lawrence

Vanessa Sanburn Lawrence

Write-in

Write-in

Write-in

A Precinct 10 B Typ:01 Seq:0010 Spl:01 C

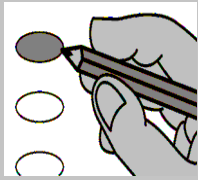
A Precinct 11 B State of Kansas C Douglas County

Instructions to Voter

Notice: If you tear, deface or make a mistake and wrongfully mark any ballot, you must return it to the election board and receive a new ballot or set of ballots.

To vote for a person darken the oval at the left of the person's name. To vote for a person whose name is not printed on the ballot, write the person's name in the blank space and darken the oval to the left.

To vote you must darken the oval completely



USD OFFICES

USD 497 School Board Member At-Large Vote for Three or Fewer

MUNICIPAL OFFICES

Lawrence City Commision Vote for Three or Fewer

James Bush Lawrence

Aron Cromwell Lawrence

Dennis D. Constance Lawrence

Lance Johnson Lawrence

Tom Johnson Lawrence

Gwendolyn Klingenberg Lawrence

Mike Amyx Lawrence

Price T. Banks Lawrence

Write-in

Write-in

Write-in

Robert Byers Lawrence

Tom Hartley Lawrence

Thom Hepford Lawrence

John W. Mitchell Lawrence

Michael L. Pomes Lawrence

Michael Riley Lawrence

Vanessa Sanburn Lawrence

Mark F. Bradford Lawrence

Write-in

Write-in

Write-in

A Precinct 11 B Typ:01 Seq:0011 Spl:01 C

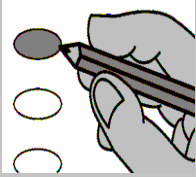
A Precinct 12 B State of Kansas C Douglas County

Instructions to Voter

Notice: If you tear, deface or make a mistake and wrongfully mark any ballot, you must return it to the election board and receive a new ballot or set of ballots.

To vote for a person darken the oval at the left of the person's name. To vote for a person whose name is not printed on the ballot, write the person's name in the blank space and darken the oval to the left.

To vote you must darken the oval completely



USD OFFICES

USD 497 School Board Member At-Large Vote for Three or Fewer

MUNICIPAL OFFICES

Lawrence City Commision Vote for Three or Fewer

Aron Cromwell Lawrence

Dennis D. Constance Lawrence

Lance Johnson Lawrence

Tom Johnson Lawrence

Gwendolyn Klingenberg Lawrence

Mike Amyx Lawrence

Price T. Banks Lawrence

James Bush Lawrence

Write-in

Write-in

Write-in

Thom Hepford Lawrence

John W. Mitchell Lawrence

Michael L. Pomes Lawrence

Michael Riley Lawrence

Vanessa Sanburn Lawrence

Mark F. Bradford Lawrence

Robert Byers Lawrence

Tom Hartley Lawrence

Write-in

Write-in

Write-in

A Precinct 12 B Typ:01 Seq:0012 Spl:01 C

A Precinct 13 B State of Kansas C Douglas County

Instructions to Voter

Notice: If you tear, deface or make a mistake and wrongfully mark any ballot, you must return it to the election board and receive a new ballot or set of ballots.

To vote for a person darken the oval at the left of the person's name. To vote for a person whose name is not printed on the ballot, write the person's name in the blank space and darken the oval to the left.



To vote you must darken the oval completely

USD OFFICES

USD 497 School Board Member At-Large Vote for Three or Fewer

MUNICIPAL OFFICES

Lawrence City Commision Vote for Three or Fewer

Dennis D. Constance Lawrence

Lance Johnson Lawrence

Tom Johnson Lawrence

Gwendolyn Klingenberg Lawrence

Mike Amyx Lawrence

Price T. Banks Lawrence

James Bush Lawrence

Aron Cromwell Lawrence

Write-in

Write-in

Write-in

John W. Mitchell Lawrence

Michael L. Pomes Lawrence

Michael Riley Lawrence

Vanessa Sanburn Lawrence

Mark F. Bradford Lawrence

Robert Byers Lawrence

Tom Hartley Lawrence

Thom Hepford Lawrence

Write-in

Write-in

Write-in

A Precinct 13 B Typ:01 Seq:0013 Spl:01 C

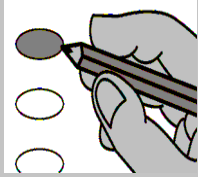
A Precinct 14 B State of Kansas C Douglas County

Instructions to Voter

Notice: If you tear, deface or make a mistake and wrongfully mark any ballot, you must return it to the election board and receive a new ballot or set of ballots.

To vote for a person darken the oval at the left of the person's name. To vote for a person whose name is not printed on the ballot, write the person's name in the blank space and darken the oval to the left.

To vote you must darken the oval completely



USD OFFICES

USD 497 School Board Member At-Large Vote for Three or Fewer

MUNICIPAL OFFICES

Lawrence City Commision Vote for Three or Fewer

Lance Johnson Lawrence

Tom Johnson Lawrence

Gwendolyn Klingenberg Lawrence

Mike Amyx Lawrence

Price T. Banks Lawrence

James Bush Lawrence

Aron Cromwell Lawrence

Dennis D. Constance Lawrence

Write-in

Write-in

Write-in

Michael L. Pomes Lawrence

Michael Riley Lawrence

Vanessa Sanburn Lawrence

Mark F. Bradford Lawrence

Robert Byers Lawrence

Tom Hartley Lawrence

Thom Hepford Lawrence

John W. Mitchell Lawrence

Write-in

Write-in

Write-in

A Precinct 14 B Typ:01 Seq:0014 Spl:01 C

A Precinct 15 B State of Kansas C Douglas County

Instructions to Voter

Notice: If you tear, deface or make a mistake and wrongfully mark any ballot, you must return it to the election board and receive a new ballot or set of ballots.

To vote for a person darken the oval at the left of the person's name. To vote for a person whose name is not printed on the ballot, write the person's name in the blank space and darken the oval to the left.



To vote you must darken the oval completely

USD OFFICES

USD 497 School Board Member At-Large Vote for Three or Fewer

MUNICIPAL OFFICES

Lawrence City Commision Vote for Three or Fewer

Tom Johnson Lawrence

Gwendolyn Klingenberg Lawrence

Mike Amyx Lawrence

Price T. Banks Lawrence

James Bush Lawrence

Aron Cromwell Lawrence

Dennis D. Constance Lawrence

Lance Johnson Lawrence

Write-in

Write-in

Write-in

Michael Riley Lawrence

Vanessa Sanburn Lawrence

Mark F. Bradford Lawrence

Robert Byers Lawrence

Tom Hartley Lawrence

Thom Hepford Lawrence

John W. Mitchell Lawrence

Michael L. Pomes Lawrence

Write-in

Write-in

Write-in

A Precinct 15 B Typ:01 Seq:0015 Spl:01 C

A Precinct 16 B State of Kansas C Douglas County

Instructions to Voter

Notice: If you tear, deface or make a mistake and wrongfully mark any ballot, you must return it to the election board and receive a new ballot or set of ballots.

To vote for a person darken the oval at the left of the person's name. To vote for a person whose name is not printed on the ballot, write the person's name in the blank space and darken the oval to the left.



To vote you must darken the oval completely

USD OFFICES

USD 497 School Board Member At-Large Vote for Three or Fewer

MUNICIPAL OFFICES

Lawrence City Commision Vote for Three or Fewer

Gwendolyn Klingenberg Lawrence

Mike Amyx Lawrence

Price T. Banks Lawrence

James Bush Lawrence

Aron Cromwell Lawrence

Dennis D. Constance Lawrence

Lance Johnson Lawrence

Tom Johnson Lawrence

Write-in

Write-in

Write-in

Vanessa Sanburn Lawrence

Mark F. Bradford Lawrence

Robert Byers Lawrence

Tom Hartley Lawrence

Thom Hepford Lawrence

John W. Mitchell Lawrence

Michael L. Pomes Lawrence

Michael Riley Lawrence

Write-in

Write-in

Write-in

A Precinct 16 B Typ:01 Seq:0016 Spl:01 C

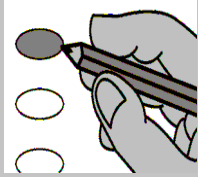
A Precinct 17 B State of Kansas C Douglas County

Instructions to Voter

Notice: If you tear, deface or make a mistake and wrongfully mark any ballot, you must return it to the election board and receive a new ballot or set of ballots.

To vote for a person darken the oval at the left of the person's name. To vote for a person whose name is not printed on the ballot, write the person's name in the blank space and darken the oval to the left.

To vote you must darken the oval completely



USD OFFICES

USD 497 School Board Member At-Large Vote for Three or Fewer

MUNICIPAL OFFICES

Lawrence City Commision Vote for Three or Fewer

Gwendolyn Klingenberg Lawrence

Mike Amyx Lawrence

Price T. Banks Lawrence

James Bush Lawrence

Aron Cromwell Lawrence

Dennis D. Constance Lawrence

Lance Johnson Lawrence

Tom Johnson Lawrence

Write-in

Write-in

Write-in

Vanessa Sanburn Lawrence

Mark F. Bradford Lawrence

Robert Byers Lawrence

Tom Hartley Lawrence

Thom Hepford Lawrence

John W. Mitchell Lawrence

Michael L. Pomes Lawrence

Michael Riley Lawrence

Write-in

Write-in

Write-in

A Precinct 17 B Typ:01 Seq:0017 Spl:01 C

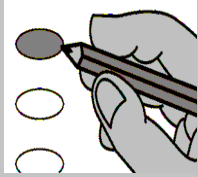
A Precinct 18 B State of Kansas C Douglas County

Instructions to Voter

Notice: If you tear, deface or make a mistake and wrongfully mark any ballot, you must return it to the election board and receive a new ballot or set of ballots.

To vote for a person darken the oval at the left of the person's name. To vote for a person whose name is not printed on the ballot, write the person's name in the blank space and darken the oval to the left.

To vote you must darken the oval completely



USD OFFICES

USD 497 School Board Member At-Large Vote for Three or Fewer

MUNICIPAL OFFICES

Lawrence City Commision Vote for Three or Fewer

Gwendolyn Klingenberg Lawrence

Mike Amyx Lawrence

Price T. Banks Lawrence

James Bush Lawrence

Aron Cromwell Lawrence

Dennis D. Constance Lawrence

Lance Johnson Lawrence

Tom Johnson Lawrence

Write-in

Write-in

Write-in

Vanessa Sanburn Lawrence

Mark F. Bradford Lawrence

Robert Byers Lawrence

Tom Hartley Lawrence

Thom Hepford Lawrence

John W. Mitchell Lawrence

Michael L. Pomes Lawrence

Michael Riley Lawrence

Write-in

Write-in

Write-in

A Precinct 18 B Typ:01 Seq:0018 Spl:01 C

A Precinct 19 B State of Kansas C Douglas County

Instructions to Voter

Notice: If you tear, deface or make a mistake and wrongfully mark any ballot, you must return it to the election board and receive a new ballot or set of ballots.

To vote for a person darken the oval at the left of the person's name. To vote for a person whose name is not printed on the ballot, write the person's name in the blank space and darken the oval to the left.



To vote you must darken the oval completely

USD OFFICES

USD 497 School Board Member At-Large Vote for Three or Fewer

MUNICIPAL OFFICES

Lawrence City Commision Vote for Three or Fewer

James Bush Lawrence

Aron Cromwell Lawrence

Dennis D. Constance Lawrence

Lance Johnson Lawrence

Tom Johnson Lawrence

Gwendolyn Klingenberg Lawrence

Mike Amyx Lawrence

Price T. Banks Lawrence

Write-in

Write-in

Write-in

Michael L. Pomes Lawrence

Michael Riley Lawrence

Vanessa Sanburn Lawrence

Mark F. Bradford Lawrence

Robert Byers Lawrence

Tom Hartley Lawrence

Thom Hepford Lawrence

John W. Mitchell Lawrence

Write-in

Write-in

Write-in

A Precinct 19 B Typ:01 Seq:0019 Spl:01 C

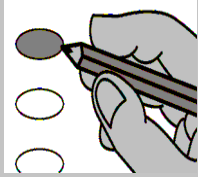
A Precinct 20 B State of Kansas C Douglas County

Instructions to Voter

Notice: If you tear, deface or make a mistake and wrongfully mark any ballot, you must return it to the election board and receive a new ballot or set of ballots.

To vote for a person darken the oval at the left of the person's name. To vote for a person whose name is not printed on the ballot, write the person's name in the blank space and darken the oval to the left.

To vote you must darken the oval completely



USD OFFICES

USD 497 School Board Member At-Large Vote for Three or Fewer

MUNICIPAL OFFICES

Lawrence City Commision Vote for Three or Fewer

Aron Cromwell Lawrence

Dennis D. Constance Lawrence

Lance Johnson Lawrence

Tom Johnson Lawrence

Gwendolyn Klingenberg Lawrence

Mike Amyx Lawrence

Price T. Banks Lawrence

James Bush Lawrence

Write-in

Write-in

Write-in

Thom Hepford Lawrence

John W. Mitchell Lawrence

Michael L. Pomes Lawrence

Michael Riley Lawrence

Vanessa Sanburn Lawrence

Mark F. Bradford Lawrence

Robert Byers Lawrence

Tom Hartley Lawrence

Write-in

Write-in

Write-in

A Precinct 20 B Typ:01 Seq:0020 Spl:01 C

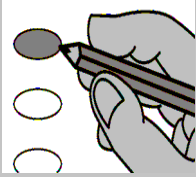
A Precinct 21 B State of Kansas C Douglas County

Instructions to Voter

Notice: If you tear, deface or make a mistake and wrongfully mark any ballot, you must return it to the election board and receive a new ballot or set of ballots.

To vote for a person darken the oval at the left of the person's name. To vote for a person whose name is not printed on the ballot, write the person's name in the blank space and darken the oval to the left.

To vote you must darken the oval completely



USD OFFICES

USD 497 School Board Member At-Large Vote for Three or Fewer

MUNICIPAL OFFICES

Lawrence City Commision Vote for Three or Fewer

Aron Cromwell Lawrence

Dennis D. Constance Lawrence

Lance Johnson Lawrence

Tom Johnson Lawrence

Gwendolyn Klingenberg Lawrence

Mike Amyx Lawrence

Price T. Banks Lawrence

James Bush Lawrence

Write-in

Write-in

Write-in

John W. Mitchell Lawrence

Michael L. Pomes Lawrence

Michael Riley Lawrence

Vanessa Sanburn Lawrence

Mark F. Bradford Lawrence

Robert Byers Lawrence

Tom Hartley Lawrence

Thom Hepford Lawrence

Write-in

Write-in

Write-in

A Precinct 21 B Typ:01 Seq:0021 Spl:01 C

A Precinct 22 B State of Kansas C Douglas County

Instructions to Voter

Notice: If you tear, deface or make a mistake and wrongfully mark any ballot, you must return it to the election board and receive a new ballot or set of ballots.

To vote for a person darken the oval at the left of the person's name. To vote for a person whose name is not printed on the ballot, write the person's name in the blank space and darken the oval to the left.



To vote you must darken the oval completely

USD OFFICES

USD 497 School Board Member At-Large Vote for Three or Fewer

MUNICIPAL OFFICES

Lawrence City Commision Vote for Three or Fewer

Lance Johnson Lawrence

Tom Johnson Lawrence

Gwendolyn Klingenberg Lawrence

Mike Amyx Lawrence

Price T. Banks Lawrence

James Bush Lawrence

Aron Cromwell Lawrence

Dennis D. Constance Lawrence

Write-in

Write-in

Write-in

Michael L. Pomes Lawrence

Michael Riley Lawrence

Vanessa Sanburn Lawrence

Mark F. Bradford Lawrence

Robert Byers Lawrence

Tom Hartley Lawrence

Thom Hepford Lawrence

John W. Mitchell Lawrence

Write-in

Write-in

Write-in

A Precinct 22 B Typ:01 Seq:0022 Spl:01 C

A Precinct 23 B State of Kansas C Douglas County

Instructions to Voter

! Notice: If you tear, deface or make a mistake and wrongfully mark any ballot, you must return it to the election board and receive a new ballot or set of ballots.

➔ To vote for a person darken the oval at the left of the person's name. To vote for a person whose name is not printed on the ballot, write the person's name in the blank space and darken the oval to the left.



USD OFFICES

USD 497 School Board Member
At-Large
Vote for Three or Fewer

MUNICIPAL OFFICES

Lawrence City Commision
Vote for Three or Fewer

Tom Johnson Lawrence

Gwendolyn Klingenberg Lawrence

Mike Amyx Lawrence

Price T. Banks Lawrence

James Bush Lawrence

Aron Cromwell Lawrence

Dennis D. Constance Lawrence

Lance Johnson Lawrence

Write-in

Write-in

Write-in

Michael Riley Lawrence

Vanessa Sanburn Lawrence

Mark F. Bradford Lawrence

Robert Byers Lawrence

Tom Hartley Lawrence

Thom Hepford Lawrence

John W. Mitchell Lawrence

Michael L. Pomes Lawrence

Write-in

Write-in

Write-in

A Precinct 23 B Typ:01 Seq:0023 Spl:01 C

A Precinct 24 B State of Kansas C Douglas County

Instructions to Voter

Notice: If you tear, deface or make a mistake and wrongfully mark any ballot, you must return it to the election board and receive a new ballot or set of ballots.

To vote for a person darken the oval at the left of the person's name. To vote for a person whose name is not printed on the ballot, write the person's name in the blank space and darken the oval to the left.



To vote you must darken the oval completely

USD OFFICES

USD 497 School Board Member At-Large Vote for Three or Fewer

MUNICIPAL OFFICES

Lawrence City Commision Vote for Three or Fewer

Price T. Banks Lawrence

James Bush Lawrence

Aron Cromwell Lawrence

Dennis D. Constance Lawrence

Lance Johnson Lawrence

Tom Johnson Lawrence

Gwendolyn Klingenberg Lawrence

Mike Amyx Lawrence

Write-in

Write-in

Write-in

Thom Hepford Lawrence

John W. Mitchell Lawrence

Michael L. Pomes Lawrence

Michael Riley Lawrence

Vanessa Sanburn Lawrence

Mark F. Bradford Lawrence

Robert Byers Lawrence

Tom Hartley Lawrence

Write-in

Write-in

Write-in

A Precinct 24 B Typ:01 Seq:0024 Spl:01 C

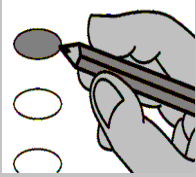
A Precinct 25 B State of Kansas C Douglas County

Instructions to Voter

Notice: If you tear, deface or make a mistake and wrongfully mark any ballot, you must return it to the election board and receive a new ballot or set of ballots.

To vote for a person darken the oval at the left of the person's name. To vote for a person whose name is not printed on the ballot, write the person's name in the blank space and darken the oval to the left.

To vote you must darken the oval completely



USD OFFICES

USD 497 School Board Member At-Large Vote for Three or Fewer

MUNICIPAL OFFICES

Lawrence City Commision Vote for Three or Fewer

Mike Amyx Lawrence

Price T. Banks Lawrence

James Bush Lawrence

Aron Cromwell Lawrence

Dennis D. Constance Lawrence

Lance Johnson Lawrence

Tom Johnson Lawrence

Gwendolyn Klingenberg Lawrence

Write-in

Write-in

Write-in

Robert Byers Lawrence

Tom Hartley Lawrence

Thom Hepford Lawrence

John W. Mitchell Lawrence

Michael L. Pomes Lawrence

Michael Riley Lawrence

Vanessa Sanburn Lawrence

Mark F. Bradford Lawrence

Write-in

Write-in

Write-in

A Precinct 25 B Typ:01 Seq:0025 Spl:01 C

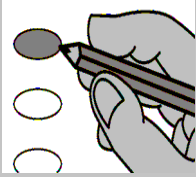
A Precinct 26 B State of Kansas C Douglas County

Instructions to Voter

Notice: If you tear, deface or make a mistake and wrongfully mark any ballot, you must return it to the election board and receive a new ballot or set of ballots.

To vote for a person darken the oval at the left of the person's name. To vote for a person whose name is not printed on the ballot, write the person's name in the blank space and darken the oval to the left.

To vote you must darken the oval completely



USD OFFICES

USD 497 School Board Member At-Large Vote for Three or Fewer

MUNICIPAL OFFICES

Lawrence City Commision Vote for Three or Fewer

Price T. Banks Lawrence

James Bush Lawrence

Aron Cromwell Lawrence

Dennis D. Constance Lawrence

Lance Johnson Lawrence

Tom Johnson Lawrence

Gwendolyn Klingenberg Lawrence

Mike Amyx Lawrence

Write-in

Write-in

Write-in

Robert Byers Lawrence

Tom Hartley Lawrence

Thom Hepford Lawrence

John W. Mitchell Lawrence

Michael L. Pomes Lawrence

Michael Riley Lawrence

Vanessa Sanburn Lawrence

Mark F. Bradford Lawrence

Write-in

Write-in

Write-in

A Precinct 26 B Typ:01 Seq:0026 Spl:01 C

A Precinct 27 B State of Kansas C Douglas County

Instructions to Voter

Notice: If you tear, deface or make a mistake and wrongfully mark any ballot, you must return it to the election board and receive a new ballot or set of ballots.

To vote for a person darken the oval at the left of the person's name. To vote for a person whose name is not printed on the ballot, write the person's name in the blank space and darken the oval to the left.



To vote you must darken the oval completely

USD OFFICES

USD 497 School Board Member At-Large Vote for Three or Fewer

MUNICIPAL OFFICES

Lawrence City Commision Vote for Three or Fewer

James Bush Lawrence

Aron Cromwell Lawrence

Dennis D. Constance Lawrence

Lance Johnson Lawrence

Tom Johnson Lawrence

Gwendolyn Klingenberg Lawrence

Mike Amyx Lawrence

Price T. Banks Lawrence

Write-in

Write-in

Write-in

Tom Hartley Lawrence

Thom Hepford Lawrence

John W. Mitchell Lawrence

Michael L. Pomes Lawrence

Michael Riley Lawrence

Vanessa Sanburn Lawrence

Mark F. Bradford Lawrence

Robert Byers Lawrence

Write-in

Write-in

Write-in

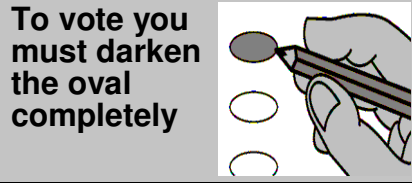
A Precinct 27 B Typ:01 Seq:0027 Spl:01 C

A Precinct 28 B State of Kansas C Douglas County

Instructions to Voter

Notice: If you tear, deface or make a mistake and wrongfully mark any ballot, you must return it to the election board and receive a new ballot or set of ballots.

To vote for a person darken the oval at the left of the person's name. To vote for a person whose name is not printed on the ballot, write the person's name in the blank space and darken the oval to the left.



To vote you must darken the oval completely

USD OFFICES

USD 497 School Board Member At-Large Vote for Three or Fewer

MUNICIPAL OFFICES

Lawrence City Commision Vote for Three or Fewer

Tom Johnson Lawrence

Gwendolyn Klingenberg Lawrence

Mike Amyx Lawrence

Price T. Banks Lawrence

James Bush Lawrence

Aron Cromwell Lawrence

Dennis D. Constance Lawrence

Lance Johnson Lawrence

Write-in

Write-in

Write-in

Michael Riley Lawrence

Vanessa Sanburn Lawrence

Mark F. Bradford Lawrence

Robert Byers Lawrence

Tom Hartley Lawrence

Thom Hepford Lawrence

John W. Mitchell Lawrence

Michael L. Pomes Lawrence

Write-in

Write-in

Write-in

A Precinct 28 B Typ:01 Seq:0028 Spl:01 C

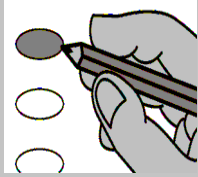
A Precinct 29 B State of Kansas C Douglas County

Instructions to Voter

Notice: If you tear, deface or make a mistake and wrongfully mark any ballot, you must return it to the election board and receive a new ballot or set of ballots.

To vote for a person darken the oval at the left of the person's name. To vote for a person whose name is not printed on the ballot, write the person's name in the blank space and darken the oval to the left.

To vote you must darken the oval completely



USD OFFICES

USD 497 School Board Member At-Large Vote for Three or Fewer

MUNICIPAL OFFICES

Lawrence City Commision Vote for Three or Fewer

Dennis D. Constance Lawrence

Lance Johnson Lawrence

Tom Johnson Lawrence

Gwendolyn Klingenberg Lawrence

Mike Amyx Lawrence

Price T. Banks Lawrence

James Bush Lawrence

Aron Cromwell Lawrence

Write-in

Write-in

Write-in

John W. Mitchell Lawrence

Michael L. Pomes Lawrence

Michael Riley Lawrence

Vanessa Sanburn Lawrence

Mark F. Bradford Lawrence

Robert Byers Lawrence

Tom Hartley Lawrence

Thom Hepford Lawrence

Write-in

Write-in

Write-in

A Precinct 29 B Typ:01 Seq:0029 Spl:01 C

A Precinct 30 B State of Kansas C Douglas County

Instructions to Voter

Notice: If you tear, deface or make a mistake and wrongfully mark any ballot, you must return it to the election board and receive a new ballot or set of ballots.

To vote for a person darken the oval at the left of the person's name. To vote for a person whose name is not printed on the ballot, write the person's name in the blank space and darken the oval to the left.



To vote you must darken the oval completely

USD OFFICES

USD 497 School Board Member At-Large Vote for Three or Fewer

MUNICIPAL OFFICES

Lawrence City Commision Vote for Three or Fewer

Lance Johnson Lawrence

Tom Johnson Lawrence

Gwendolyn Klingenberg Lawrence

Mike Amyx Lawrence

Price T. Banks Lawrence

James Bush Lawrence

Aron Cromwell Lawrence

Dennis D. Constance Lawrence

Write-in

Write-in

Write-in

Tom Hartley Lawrence

Thom Hepford Lawrence

John W. Mitchell Lawrence

Michael L. Pomes Lawrence

Michael Riley Lawrence

Vanessa Sanburn Lawrence

Mark F. Bradford Lawrence

Robert Byers Lawrence

Write-in

Write-in

Write-in

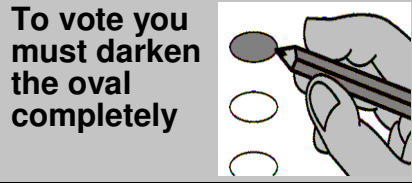
A Precinct 30 B Typ:01 Seq:0030 Spl:01 C

A Precinct 31 B State of Kansas C Douglas County

Instructions to Voter

Notice: If you tear, deface or make a mistake and wrongfully mark any ballot, you must return it to the election board and receive a new ballot or set of ballots.

To vote for a person darken the oval at the left of the person's name. To vote for a person whose name is not printed on the ballot, write the person's name in the blank space and darken the oval to the left.



To vote you must darken the oval completely

USD OFFICES

USD 497 School Board Member At-Large Vote for Three or Fewer

MUNICIPAL OFFICES

Lawrence City Commision Vote for Three or Fewer

Aron Cromwell Lawrence

Dennis D. Constance Lawrence

Lance Johnson Lawrence

Tom Johnson Lawrence

Gwendolyn Klingenberg Lawrence

Mike Amyx Lawrence

Price T. Banks Lawrence

James Bush Lawrence

Write-in

Write-in

Write-in

Thom Hepford Lawrence

John W. Mitchell Lawrence

Michael L. Pomes Lawrence

Michael Riley Lawrence

Vanessa Sanburn Lawrence

Mark F. Bradford Lawrence

Robert Byers Lawrence

Tom Hartley Lawrence

Write-in

Write-in

Write-in

A Precinct 31 B Typ:01 Seq:0031 Spl:01 C

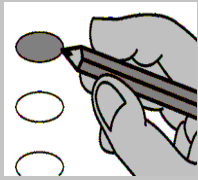
A Precinct 32 B State of Kansas C Douglas County

Instructions to Voter

! Notice: If you tear, deface or make a mistake and wrongfully mark any ballot, you must return it to the election board and receive a new ballot or set of ballots.

➔ To vote for a person darken the oval at the left of the person's name. To vote for a person whose name is not printed on the ballot, write the person's name in the blank space and darken the oval to the left.

To vote you must darken the oval completely



USD OFFICES

USD 497 School Board Member
At-Large
Vote for Three or Fewer

MUNICIPAL OFFICES

Lawrence City Commision
Vote for Three or Fewer

Gwendolyn Klingenberg Lawrence

Mike Amyx Lawrence

Price T. Banks Lawrence

James Bush Lawrence

Aron Cromwell Lawrence

Dennis D. Constance Lawrence

Lance Johnson Lawrence

Tom Johnson Lawrence

Write-in

Write-in

Write-in

Vanessa Sanburn Lawrence

Mark F. Bradford Lawrence

Robert Byers Lawrence

Tom Hartley Lawrence

Thom Hepford Lawrence

John W. Mitchell Lawrence

Michael L. Pomes Lawrence

Michael Riley Lawrence

Write-in

Write-in

Write-in

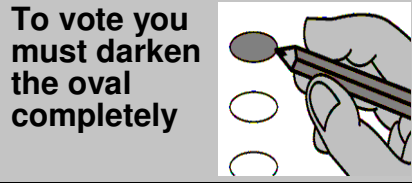
A Precinct 32 B Typ:01 Seq:0032 Spl:01 C

A Precinct 33 B State of Kansas C Douglas County

Instructions to Voter

Notice: If you tear, deface or make a mistake and wrongfully mark any ballot, you must return it to the election board and receive a new ballot or set of ballots.

To vote for a person darken the oval at the left of the person's name. To vote for a person whose name is not printed on the ballot, write the person's name in the blank space and darken the oval to the left.



To vote you must darken the oval completely

USD OFFICES

USD 497 School Board Member At-Large Vote for Three or Fewer

MUNICIPAL OFFICES

Lawrence City Commision Vote for Three or Fewer

Mike Amyx Lawrence

Price T. Banks Lawrence

James Bush Lawrence

Aron Cromwell Lawrence

Dennis D. Constance Lawrence

Lance Johnson Lawrence

Tom Johnson Lawrence

Gwendolyn Klingenberg Lawrence

Write-in

Write-in

Write-in

Mark F. Bradford Lawrence

Robert Byers Lawrence

Tom Hartley Lawrence

Thom Hepford Lawrence

John W. Mitchell Lawrence

Michael L. Pomes Lawrence

Michael Riley Lawrence

Vanessa Sanburn Lawrence

Write-in

Write-in

Write-in

A Precinct 33 B Typ:01 Seq:0033 Spl:01 C

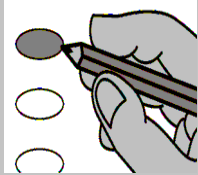
A Precinct 34 B State of Kansas C Douglas County

Instructions to Voter

Notice: If you tear, deface or make a mistake and wrongfully mark any ballot, you must return it to the election board and receive a new ballot or set of ballots.

To vote for a person darken the oval at the left of the person's name. To vote for a person whose name is not printed on the ballot, write the person's name in the blank space and darken the oval to the left.

To vote you must darken the oval completely



USD OFFICES

USD 497 School Board Member At-Large Vote for Three or Fewer

MUNICIPAL OFFICES

Lawrence City Commision Vote for Three or Fewer

Price T. Banks Lawrence

James Bush Lawrence

Aron Cromwell Lawrence

Dennis D. Constance Lawrence

Lance Johnson Lawrence

Tom Johnson Lawrence

Gwendolyn Klingenberg Lawrence

Mike Amyx Lawrence

Write-in

Write-in

Write-in

Michael Riley Lawrence

Vanessa Sanburn Lawrence

Mark F. Bradford Lawrence

Robert Byers Lawrence

Tom Hartley Lawrence

Thom Hepford Lawrence

John W. Mitchell Lawrence

Michael L. Pomes Lawrence

Write-in

Write-in

Write-in

A Precinct 34 B Typ:01 Seq:0034 Spl:01 C

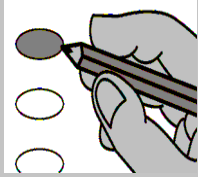
A Precinct 35 B State of Kansas C Douglas County

Instructions to Voter

Notice: If you tear, deface or make a mistake and wrongfully mark any ballot, you must return it to the election board and receive a new ballot or set of ballots.

To vote for a person darken the oval at the left of the person's name. To vote for a person whose name is not printed on the ballot, write the person's name in the blank space and darken the oval to the left.

To vote you must darken the oval completely



USD OFFICES

USD 497 School Board Member At-Large Vote for Three or Fewer

MUNICIPAL OFFICES

Lawrence City Commision Vote for Three or Fewer

James Bush Lawrence

Aron Cromwell Lawrence

Dennis D. Constance Lawrence

Lance Johnson Lawrence

Tom Johnson Lawrence

Gwendolyn Klingenberg Lawrence

Mike Amyx Lawrence

Price T. Banks Lawrence

Write-in

Write-in

Write-in

Tom Hartley Lawrence

Thom Hepford Lawrence

John W. Mitchell Lawrence

Michael L. Pomes Lawrence

Michael Riley Lawrence

Vanessa Sanburn Lawrence

Mark F. Bradford Lawrence

Robert Byers Lawrence

Write-in

Write-in

Write-in

A Precinct 35 B Typ:01 Seq:0035 Spl:01 C

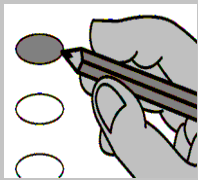
A Precinct 36 B State of Kansas C Douglas County

Instructions to Voter

Notice: If you tear, deface or make a mistake and wrongfully mark any ballot, you must return it to the election board and receive a new ballot or set of ballots.

To vote for a person darken the oval at the left of the person's name. To vote for a person whose name is not printed on the ballot, write the person's name in the blank space and darken the oval to the left.

To vote you must darken the oval completely



USD OFFICES

USD 497 School Board Member At-Large Vote for Three or Fewer

MUNICIPAL OFFICES

Lawrence City Commision Vote for Three or Fewer

Aron Cromwell Lawrence

Dennis D. Constance Lawrence

Lance Johnson Lawrence

Tom Johnson Lawrence

Gwendolyn Klingenberg Lawrence

Mike Amyx Lawrence

Price T. Banks Lawrence

James Bush Lawrence

Write-in

Write-in

Write-in

Thom Hepford Lawrence

John W. Mitchell Lawrence

Michael L. Pomes Lawrence

Michael Riley Lawrence

Vanessa Sanburn Lawrence

Mark F. Bradford Lawrence

Robert Byers Lawrence

Tom Hartley Lawrence

Write-in

Write-in

Write-in

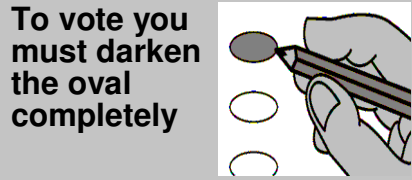
A Precinct 36 B Typ:01 Seq:0036 Spl:01 C

A Precinct 37 B State of Kansas C Douglas County

Instructions to Voter

Notice: If you tear, deface or make a mistake and wrongfully mark any ballot, you must return it to the election board and receive a new ballot or set of ballots.

To vote for a person darken the oval at the left of the person's name. To vote for a person whose name is not printed on the ballot, write the person's name in the blank space and darken the oval to the left.



To vote you must darken the oval completely

USD OFFICES

USD 497 School Board Member At-Large Vote for Three or Fewer

MUNICIPAL OFFICES

Lawrence City Commision Vote for Three or Fewer

Dennis D. Constance Lawrence

Lance Johnson Lawrence

Tom Johnson Lawrence

Gwendolyn Klingenberg Lawrence

Mike Amyx Lawrence

Price T. Banks Lawrence

James Bush Lawrence

Aron Cromwell Lawrence

Write-in

Write-in

Write-in

Mark F. Bradford Lawrence

Robert Byers Lawrence

Tom Hartley Lawrence

Thom Hepford Lawrence

John W. Mitchell Lawrence

Michael L. Pomes Lawrence

Michael Riley Lawrence

Vanessa Sanburn Lawrence

Write-in

Write-in

Write-in

A Precinct 37 B Typ:01 Seq:0037 Spl:01 C

A Precinct 38 B State of Kansas C Douglas County

Instructions to Voter

Notice: If you tear, deface or make a mistake and wrongfully mark any ballot, you must return it to the election board and receive a new ballot or set of ballots.

To vote for a person darken the oval at the left of the person's name. To vote for a person whose name is not printed on the ballot, write the person's name in the blank space and darken the oval to the left.



To vote you must darken the oval completely

USD OFFICES

USD 497 School Board Member At-Large Vote for Three or Fewer

MUNICIPAL OFFICES

Lawrence City Commision Vote for Three or Fewer

Gwendolyn Klingenberg Lawrence

Mike Amyx Lawrence

Price T. Banks Lawrence

James Bush Lawrence

Aron Cromwell Lawrence

Dennis D. Constance Lawrence

Lance Johnson Lawrence

Tom Johnson Lawrence

Write-in

Write-in

Write-in

Michael L. Pomes Lawrence

Michael Riley Lawrence

Vanessa Sanburn Lawrence

Mark F. Bradford Lawrence

Robert Byers Lawrence

Tom Hartley Lawrence

Thom Hepford Lawrence

John W. Mitchell Lawrence

Write-in

Write-in

Write-in

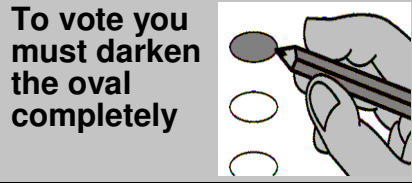
A Precinct 38 B Typ:01 Seq:0038 Spl:01 C

A Precinct 39 B State of Kansas C Douglas County

Instructions to Voter

Notice: If you tear, deface or make a mistake and wrongfully mark any ballot, you must return it to the election board and receive a new ballot or set of ballots.

To vote for a person darken the oval at the left of the person's name. To vote for a person whose name is not printed on the ballot, write the person's name in the blank space and darken the oval to the left.



To vote you must darken the oval completely

USD OFFICES

USD 497 School Board Member At-Large Vote for Three or Fewer

MUNICIPAL OFFICES

Lawrence City Commision Vote for Three or Fewer

Tom Johnson Lawrence

Gwendolyn Klingenberg Lawrence

Mike Amyx Lawrence

Price T. Banks Lawrence

James Bush Lawrence

Aron Cromwell Lawrence

Dennis D. Constance Lawrence

Lance Johnson Lawrence

Write-in

Write-in

Write-in

Michael Riley Lawrence

Vanessa Sanburn Lawrence

Mark F. Bradford Lawrence

Robert Byers Lawrence

Tom Hartley Lawrence

Thom Hepford Lawrence

John W. Mitchell Lawrence

Michael L. Pomes Lawrence

Write-in

Write-in

Write-in

A Precinct 39 B Typ:01 Seq:0039 Spl:01 C

A Precinct 40 B State of Kansas C Douglas County

Instructions to Voter

Notice: If you tear, deface or make a mistake and wrongfully mark any ballot, you must return it to the election board and receive a new ballot or set of ballots.

To vote for a person darken the oval at the left of the person's name. To vote for a person whose name is not printed on the ballot, write the person's name in the blank space and darken the oval to the left.



To vote you must darken the oval completely

USD OFFICES

USD 497 School Board Member At-Large Vote for Three or Fewer

MUNICIPAL OFFICES

Lawrence City Commision Vote for Three or Fewer

Mike Amyx Lawrence

Price T. Banks Lawrence

James Bush Lawrence

Aron Cromwell Lawrence

Dennis D. Constance Lawrence

Lance Johnson Lawrence

Tom Johnson Lawrence

Gwendolyn Klingenberg Lawrence

Write-in

Write-in

Write-in

Mark F. Bradford Lawrence

Robert Byers Lawrence

Tom Hartley Lawrence

Thom Hepford Lawrence

John W. Mitchell Lawrence

Michael L. Pomes Lawrence

Michael Riley Lawrence

Vanessa Sanburn Lawrence

Write-in

Write-in

Write-in

A Precinct 40 B Typ:01 Seq:0040 Spl:01 C

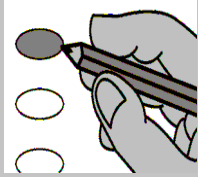
A Precinct 41 B State of Kansas C Douglas County

Instructions to Voter

Notice: If you tear, deface or make a mistake and wrongfully mark any ballot, you must return it to the election board and receive a new ballot or set of ballots.

To vote for a person darken the oval at the left of the person's name. To vote for a person whose name is not printed on the ballot, write the person's name in the blank space and darken the oval to the left.

To vote you must darken the oval completely



USD OFFICES

USD 497 School Board Member At-Large Vote for Three or Fewer

MUNICIPAL OFFICES

Lawrence City Commision Vote for Three or Fewer

Mike Amyx Lawrence

Price T. Banks Lawrence

James Bush Lawrence

Aron Cromwell Lawrence

Dennis D. Constance Lawrence

Lance Johnson Lawrence

Tom Johnson Lawrence

Gwendolyn Klingenberg Lawrence

Write-in

Write-in

Write-in

John W. Mitchell Lawrence

Michael L. Pomes Lawrence

Michael Riley Lawrence

Vanessa Sanburn Lawrence

Mark F. Bradford Lawrence

Robert Byers Lawrence

Tom Hartley Lawrence

Thom Hepford Lawrence

Write-in

Write-in

Write-in

A Precinct 41 B Typ:01 Seq:0041 Spl:01 C

A Precinct 42 B State of Kansas C Douglas County

Instructions to Voter

Notice: If you tear, deface or make a mistake and wrongfully mark any ballot, you must return it to the election board and receive a new ballot or set of ballots.

To vote for a person darken the oval at the left of the person's name. To vote for a person whose name is not printed on the ballot, write the person's name in the blank space and darken the oval to the left.



To vote you must darken the oval completely

USD OFFICES

USD 497 School Board Member At-Large Vote for Three or Fewer

MUNICIPAL OFFICES

Lawrence City Commision Vote for Three or Fewer

Price T. Banks Lawrence

James Bush Lawrence

Aron Cromwell Lawrence

Dennis D. Constance Lawrence

Lance Johnson Lawrence

Tom Johnson Lawrence

Gwendolyn Klingenberg Lawrence

Mike Amyx Lawrence

Write-in

Write-in

Write-in

Tom Hartley Lawrence

Thom Hepford Lawrence

John W. Mitchell Lawrence

Michael L. Pomes Lawrence

Michael Riley Lawrence

Vanessa Sanburn Lawrence

Mark F. Bradford Lawrence

Robert Byers Lawrence

Write-in

Write-in

Write-in

A Precinct 42 B Typ:01 Seq:0042 Spl:01 C

A Precinct 43 B State of Kansas C Douglas County

Instructions to Voter

! Notice: If you tear, deface or make a mistake and wrongfully mark any ballot, you must return it to the election board and receive a new ballot or set of ballots.

➔ To vote for a person darken the oval at the left of the person's name. To vote for a person whose name is not printed on the ballot, write the person's name in the blank space and darken the oval to the left.



USD OFFICES

USD 497 School Board Member
At-Large
Vote for Three or Fewer

MUNICIPAL OFFICES

Lawrence City Commision
Vote for Three or Fewer

James Bush Lawrence

Aron Cromwell Lawrence

Dennis D. Constance Lawrence

Lance Johnson Lawrence

Tom Johnson Lawrence

Gwendolyn Klingenberg Lawrence

Mike Amyx Lawrence

Price T. Banks Lawrence

Write-in

Write-in

Write-in

Tom Hartley Lawrence

Thom Hepford Lawrence

John W. Mitchell Lawrence

Michael L. Pomes Lawrence

Michael Riley Lawrence

Vanessa Sanburn Lawrence

Mark F. Bradford Lawrence

Robert Byers Lawrence

Write-in

Write-in

Write-in

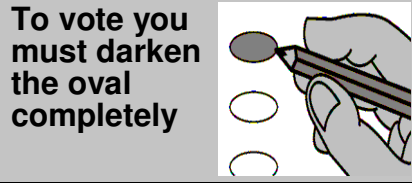
A Precinct 43 B Typ:01 Seq:0043 Spl:01 C

A Precinct 44 B State of Kansas C Douglas County

Instructions to Voter

Notice: If you tear, deface or make a mistake and wrongfully mark any ballot, you must return it to the election board and receive a new ballot or set of ballots.

To vote for a person darken the oval at the left of the person's name. To vote for a person whose name is not printed on the ballot, write the person's name in the blank space and darken the oval to the left.



To vote you must darken the oval completely

USD OFFICES

USD 497 School Board Member At-Large Vote for Three or Fewer

MUNICIPAL OFFICES

Lawrence City Commision Vote for Three or Fewer

Aron Cromwell Lawrence

Dennis D. Constance Lawrence

Lance Johnson Lawrence

Tom Johnson Lawrence

Gwendolyn Klingenberg Lawrence

Mike Amyx Lawrence

Price T. Banks Lawrence

James Bush Lawrence

Write-in

Write-in

Write-in

Robert Byers Lawrence

Tom Hartley Lawrence

Thom Hepford Lawrence

John W. Mitchell Lawrence

Michael L. Pomes Lawrence

Michael Riley Lawrence

Vanessa Sanburn Lawrence

Mark F. Bradford Lawrence

Write-in

Write-in

Write-in

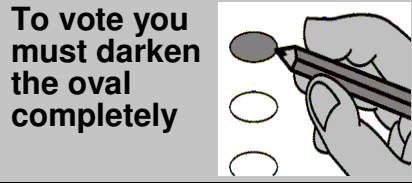
A Precinct 44 B Typ:01 Seq:0044 Spl:01 C

A Precinct 45 B State of Kansas C Douglas County

Instructions to Voter

Notice: If you tear, deface or make a mistake and wrongfully mark any ballot, you must return it to the election board and receive a new ballot or set of ballots.

To vote for a person darken the oval at the left of the person's name. To vote for a person whose name is not printed on the ballot, write the person's name in the blank space and darken the oval to the left.



To vote you must darken the oval completely

USD OFFICES

USD 497 School Board Member At-Large Vote for Three or Fewer

MUNICIPAL OFFICES

Lawrence City Commision Vote for Three or Fewer

Dennis D. Constance Lawrence

Lance Johnson Lawrence

Tom Johnson Lawrence

Gwendolyn Klingenberg Lawrence

Mike Amyx Lawrence

Price T. Banks Lawrence

James Bush Lawrence

Aron Cromwell Lawrence

Write-in

Write-in

Write-in

John W. Mitchell Lawrence

Michael L. Pomes Lawrence

Michael Riley Lawrence

Vanessa Sanburn Lawrence

Mark F. Bradford Lawrence

Robert Byers Lawrence

Tom Hartley Lawrence

Thom Hepford Lawrence

Write-in

Write-in

Write-in

A Precinct 45 B Typ:01 Seq:0045 Spl:01 C

A Precinct 46 B State of Kansas C Douglas County

Instructions to Voter

Notice: If you tear, deface or make a mistake and wrongfully mark any ballot, you must return it to the election board and receive a new ballot or set of ballots.

To vote for a person darken the oval at the left of the person's name. To vote for a person whose name is not printed on the ballot, write the person's name in the blank space and darken the oval to the left.



To vote you must darken the oval completely

USD OFFICES

USD 497 School Board Member At-Large Vote for Three or Fewer

MUNICIPAL OFFICES

Lawrence City Commision Vote for Three or Fewer

Tom Johnson Lawrence

Gwendolyn Klingenberg Lawrence

Mike Amyx Lawrence

Price T. Banks Lawrence

James Bush Lawrence

Aron Cromwell Lawrence

Dennis D. Constance Lawrence

Lance Johnson Lawrence

Write-in

Write-in

Write-in

Michael Riley Lawrence

Vanessa Sanburn Lawrence

Mark F. Bradford Lawrence

Robert Byers Lawrence

Tom Hartley Lawrence

Thom Hepford Lawrence

John W. Mitchell Lawrence

Michael L. Pomes Lawrence

Write-in

Write-in

Write-in

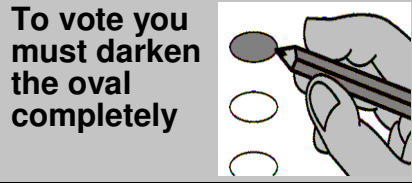
A Precinct 46 B Typ:01 Seq:0046 Spl:01 C

A Precinct 47 B State of Kansas C Douglas County

Instructions to Voter

Notice: If you tear, deface or make a mistake and wrongfully mark any ballot, you must return it to the election board and receive a new ballot or set of ballots.

To vote for a person darken the oval at the left of the person's name. To vote for a person whose name is not printed on the ballot, write the person's name in the blank space and darken the oval to the left.



To vote you must darken the oval completely

USD OFFICES

USD 497 School Board Member At-Large Vote for Three or Fewer

MUNICIPAL OFFICES

Lawrence City Commision Vote for Three or Fewer

Tom Johnson Lawrence

Gwendolyn Klingenberg Lawrence

Mike Amyx Lawrence

Price T. Banks Lawrence

James Bush Lawrence

Aron Cromwell Lawrence

Dennis D. Constance Lawrence

Lance Johnson Lawrence

Write-in

Write-in

Write-in

Michael Riley Lawrence

Vanessa Sanburn Lawrence

Mark F. Bradford Lawrence

Robert Byers Lawrence

Tom Hartley Lawrence

Thom Hepford Lawrence

John W. Mitchell Lawrence

Michael L. Pomes Lawrence

Write-in

Write-in

Write-in

A Precinct 47 B Typ:01 Seq:0047 Spl:01 C

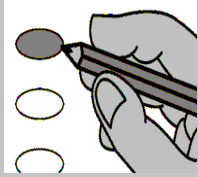
A Precinct 48 B State of Kansas C Douglas County

Instructions to Voter

Notice: If you tear, deface or make a mistake and wrongfully mark any ballot, you must return it to the election board and receive a new ballot or set of ballots.

To vote for a person darken the oval at the left of the person's name. To vote for a person whose name is not printed on the ballot, write the person's name in the blank space and darken the oval to the left.

To vote you must darken the oval completely



USD OFFICES

USD 497 School Board Member At-Large Vote for Three or Fewer

MUNICIPAL OFFICES

Lawrence City Commision Vote for Three or Fewer

Gwendolyn Klingenberg Lawrence

Mike Amyx Lawrence

Price T. Banks Lawrence

James Bush Lawrence

Aron Cromwell Lawrence

Dennis D. Constance Lawrence

Lance Johnson Lawrence

Tom Johnson Lawrence

Write-in

Write-in

Write-in

Vanessa Sanburn Lawrence

Mark F. Bradford Lawrence

Robert Byers Lawrence

Tom Hartley Lawrence

Thom Hepford Lawrence

John W. Mitchell Lawrence

Michael L. Pomes Lawrence

Michael Riley Lawrence

Write-in

Write-in

Write-in

A Precinct 48 B Typ:01 Seq:0048 Spl:01 C

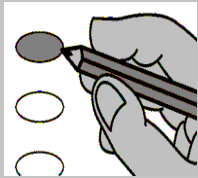
A Precinct 49 B State of Kansas C Douglas County

Instructions to Voter

Notice: If you tear, deface or make a mistake and wrongfully mark any ballot, you must return it to the election board and receive a new ballot or set of ballots.

To vote for a person darken the oval at the left of the person's name. To vote for a person whose name is not printed on the ballot, write the person's name in the blank space and darken the oval to the left.

To vote you must darken the oval completely



USD OFFICES

USD 497 School Board Member At-Large Vote for Three or Fewer

MUNICIPAL OFFICES

Lawrence City Commision Vote for Three or Fewer

Mike Amyx Lawrence

Price T. Banks Lawrence

James Bush Lawrence

Aron Cromwell Lawrence

Dennis D. Constance Lawrence

Lance Johnson Lawrence

Tom Johnson Lawrence

Gwendolyn Klingenberg Lawrence

Write-in

Write-in

Write-in

Mark F. Bradford Lawrence

Robert Byers Lawrence

Tom Hartley Lawrence

Thom Hepford Lawrence

John W. Mitchell Lawrence

Michael L. Pomes Lawrence

Michael Riley Lawrence

Vanessa Sanburn Lawrence

Write-in

Write-in

Write-in

A Precinct 49 B Typ:01 Seq:0049 Spl:01 C

A Precinct 50 Split 1 B State of Kansas C Douglas County

Instructions to Voter

Notice: If you tear, deface or make a mistake and wrongfully mark any ballot, you must return it to the election board and receive a new ballot or set of ballots.

To vote for a person darken the oval at the left of the person's name. To vote for a person whose name is not printed on the ballot, write the person's name in the blank space and darken the oval to the left.



USD OFFICES

USD 491 School Board Member At-Large Vote for Three or Fewer

- Brenda Clark Eudora
Daniel S. Dickerson Eudora
Mike Howard Eudora
Michael P. Kelso Eudora
Keith Nowland Eudora
Eric D. Votaw Eudora

Write-in
Write-in
Write-in

A Precinct 50 Split 1 B Typ:01 Seq:0050 Spl:01 C

A Precinct 50 Split 2 B State of Kansas C Douglas County

Instructions to Voter

Notice: If you tear, deface or make a mistake and wrongfully mark any ballot, you must return it to the election board and receive a new ballot or set of ballots.

To vote for a person darken the oval at the left of the person's name. To vote for a person whose name is not printed on the ballot, write the person's name in the blank space and darken the oval to the left.



To vote you must darken the oval completely

USD OFFICES

USD 491 School Board Member At-Large Vote for Three or Fewer

MUNICIPAL OFFICES

Eudora City Mayor Vote for One

- Jean Farmer Eudora
Scott Hopson Eudora
Tom Pyle Eudora
Write-in

Eudora City Council Vote for Two or Fewer

- Brian W. Nyp Eudora
Tim Reazin Eudora
Tonya Summers Eudora
Mike Warner Eudora
William J. Whitten Eudora
Write-in
Write-in

- Daniel S. Dickerson Eudora
Mike Howard Eudora
Michael P. Kelso Eudora
Keith Nowland Eudora
Eric D. Votaw Eudora
Brenda Clark Eudora
Write-in
Write-in
Write-in

A Precinct 50 Split 2 B Typ:01 Seq:0050 Spl:02 C

A Precinct 50 Split 3 B State of Kansas C Douglas County

Instructions to Voter

Notice: If you tear, deface or make a mistake and wrongfully mark any ballot, you must return it to the election board and receive a new ballot or set of ballots.

To vote for a person darken the oval at the left of the person's name. To vote for a person whose name is not printed on the ballot, write the person's name in the blank space and darken the oval to the left.



USD OFFICES

USD 497 School Board Member At-Large Vote for Three or Fewer

Robert Byers Lawrence

Tom Hartley Lawrence

Thom Hepford Lawrence

John W. Mitchell Lawrence

Michael L. Pomes Lawrence

Michael Riley Lawrence

Vanessa Sanburn Lawrence

Mark F. Bradford Lawrence

Write-in

Write-in

Write-in

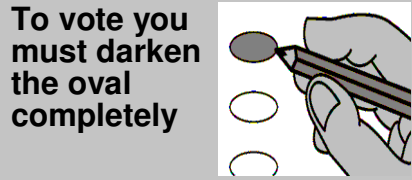
A Precinct 50 Split 3 B Typ:01 Seq:0050 Spl:03 C

A Precinct 51 Split 1 B State of Kansas C Douglas County

Instructions to Voter

Notice: If you tear, deface or make a mistake and wrongfully mark any ballot, you must return it to the election board and receive a new ballot or set of ballots.

To vote for a person darken the oval at the left of the person's name. To vote for a person whose name is not printed on the ballot, write the person's name in the blank space and darken the oval to the left.



USD OFFICES

USD 434 School Board Member USD 434 Position 4 Vote for One

- Zachary J.C. Anshutz Overbrook
Brad Fischer Overbrook
Write-in

USD 434 School Board Member USD 434 Position 5 Vote for One

- Randy Boudeman Carbondale
Write-in

USD 434 School Board Member USD 434 Position 6 Vote for One

- Chris Kendall Scranton
Shandy L. Vollrath Scranton
Write-in

A Precinct 51 Split 1 B Typ:01 Seq:0051 Spl:01 C

A Precinct 51 Split 2 B State of Kansas C Douglas County

Instructions to Voter

Notice: If you tear, deface or make a mistake and wrongfully mark any ballot, you must return it to the election board and receive a new ballot or set of ballots.

To vote for a person darken the oval at the left of the person's name. To vote for a person whose name is not printed on the ballot, write the person's name in the blank space and darken the oval to the left.



USD OFFICES

USD 450 School Board Member USD 450 Dist. A Position 4 Vote for One

- Jason C. Crawford Topeka
Gene L. Edwards Topeka
Write-in

USD 450 School Board Member USD 450 Dist. B Position 5 Vote for One

- Jim Zimmerman Topeka
Write-in

USD 450 School Board Member USD 450 Dist. C Position 6 Vote for One

- Steve Walker Topeka
Write-in

A Precinct 51 Split 2 B Typ:01 Seq:0051 Spl:02 C

A Precinct 51 Split 3 B State of Kansas C Douglas County

Instructions to Voter

Notice: If you tear, deface or make a mistake and wrongfully mark any ballot, you must return it to the election board and receive a new ballot or set of ballots.

To vote for a person darken the oval at the left of the person's name. To vote for a person whose name is not printed on the ballot, write the person's name in the blank space and darken the oval to the left.



USD OFFICES

USD 497 School Board Member At-Large Vote for Three or Fewer

Tom Hartley Lawrence

Thom Hepford Lawrence

John W. Mitchell Lawrence

Michael L. Pomes Lawrence

Michael Riley Lawrence

Vanessa Sanburn Lawrence

Mark F. Bradford Lawrence

Robert Byers Lawrence

Write-in

Write-in

Write-in

A Precinct 51 Split 3 B Typ:01 Seq:0051 Spl:03 C

A Precinct 52 Split 1 B State of Kansas C Douglas County

Instructions to Voter

Notice: If you tear, deface or make a mistake and wrongfully mark any ballot, you must return it to the election board and receive a new ballot or set of ballots.

To vote for a person darken the oval at the left of the person's name. To vote for a person whose name is not printed on the ballot, write the person's name in the blank space and darken the oval to the left.



USD OFFICES

USD 491 School Board Member At-Large Vote for Three or Fewer

- Mike Howard Eudora
Michael P. Kelso Eudora
Keith Nowland Eudora
Eric D. Votaw Eudora
Brenda Clark Eudora
Daniel S. Dickerson Eudora

Write-in
Write-in
Write-in

A Precinct 52 Split 1 B Typ:01 Seq:0052 Spl:01 C

A Precinct 52 Split 2 B State of Kansas C Douglas County

Instructions to Voter

Notice: If you tear, deface or make a mistake and wrongfully mark any ballot, you must return it to the election board and receive a new ballot or set of ballots.

To vote for a person darken the oval at the left of the person's name. To vote for a person whose name is not printed on the ballot, write the person's name in the blank space and darken the oval to the left.



USD OFFICES

USD 497 School Board Member At-Large Vote for Three or Fewer

Thom Hepford Lawrence

John W. Mitchell Lawrence

Michael L. Pomes Lawrence

Michael Riley Lawrence

Vanessa Sanburn Lawrence

Mark F. Bradford Lawrence

Robert Byers Lawrence

Tom Hartley Lawrence

Write-in

Write-in

Write-in

A Precinct 52 Split 2 B Typ:01 Seq:0052 Spl:02 C

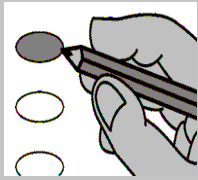
A Precinct 52 Split 3 B State of Kansas C Douglas County

Instructions to Voter

Notice: If you tear, deface or make a mistake and wrongfully mark any ballot, you must return it to the election board and receive a new ballot or set of ballots.

To vote for a person darken the oval at the left of the person's name. To vote for a person whose name is not printed on the ballot, write the person's name in the blank space and darken the oval to the left.

To vote you must darken the oval completely



USD OFFICES

USD 491 School Board Member At-Large Vote for Three or Fewer

- Michael P. Kelso Eudora
Keith Nowland Eudora
Eric D. Votaw Eudora
Brenda Clark Eudora
Daniel S. Dickerson Eudora
Mike Howard Eudora
Write-in
Write-in
Write-in

MUNICIPAL OFFICES

Eudora City Mayor Vote for One

- Scott Hopson Eudora
Tom Pyle Eudora
Jean Farmer Eudora
Write-in

Eudora City Council Vote for Two or Fewer

- Tim Reazin Eudora
Tonya Summers Eudora
Mike Warner Eudora
William J. Whitten Eudora
Brian W. Nyp Eudora
Write-in
Write-in

A Precinct 52 Split 3 B Typ:01 Seq:0052 Spl:03 C

A Precinct 53 Split 1 B State of Kansas C Douglas County

Instructions to Voter

Notice: If you tear, deface or make a mistake and wrongfully mark any ballot, you must return it to the election board and receive a new ballot or set of ballots.

To vote for a person darken the oval at the left of the person's name. To vote for a person whose name is not printed on the ballot, write the person's name in the blank space and darken the oval to the left.



USD OFFICES

USD 348 School Board Member USD 348 Dist. 1 Position 4 Vote for One

Ruth C. Barkley Baldwin City

Write-in

USD 348 School Board Member USD 348 Dist. 2 Position 5 Vote for One

Bill Busby Baldwin City

Write-in

USD 348 School Board Member USD 348 Dist. 3 Position 6 Vote for One

Ande Parks Baldwin City

Write-in

A Precinct 53 Split 1 B Typ:01 Seq:0053 Spl:01 C

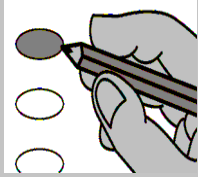
A Precinct 53 Split 2 B State of Kansas C Douglas County

Instructions to Voter

Notice: If you tear, deface or make a mistake and wrongfully mark any ballot, you must return it to the election board and receive a new ballot or set of ballots.

To vote for a person darken the oval at the left of the person's name. To vote for a person whose name is not printed on the ballot, write the person's name in the blank space and darken the oval to the left.

To vote you must darken the oval completely



USD OFFICES

USD 491 School Board Member At-Large Vote for Three or Fewer

- Keith Nowland Eudora
Eric D. Votaw Eudora
Brenda Clark Eudora
Daniel S. Dickerson Eudora
Mike Howard Eudora
Michael P. Kelso Eudora

- Write-in
Write-in
Write-in

A Precinct 53 Split 2 B Typ:01 Seq:0053 Spl:02 C

A Precinct 53 Split 3 B State of Kansas C Douglas County

Instructions to Voter

Notice: If you tear, deface or make a mistake and wrongfully mark any ballot, you must return it to the election board and receive a new ballot or set of ballots.

To vote for a person darken the oval at the left of the person's name. To vote for a person whose name is not printed on the ballot, write the person's name in the blank space and darken the oval to the left.



USD OFFICES

USD 497 School Board Member At-Large Vote for Three or Fewer

Thom Hepford Lawrence

John W. Mitchell Lawrence

Michael L. Pomes Lawrence

Michael Riley Lawrence

Vanessa Sanburn Lawrence

Mark F. Bradford Lawrence

Robert Byers Lawrence

Tom Hartley Lawrence

Write-in

Write-in

Write-in

A Precinct 53 Split 3 B Typ:01 Seq:0053 Spl:03 C

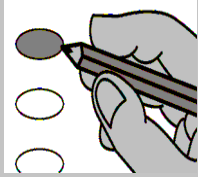
A Precinct 53 Split 4 B State of Kansas C Douglas County

Instructions to Voter

Notice: If you tear, deface or make a mistake and wrongfully mark any ballot, you must return it to the election board and receive a new ballot or set of ballots.

To vote for a person darken the oval at the left of the person's name. To vote for a person whose name is not printed on the ballot, write the person's name in the blank space and darken the oval to the left.

To vote you must darken the oval completely



USD OFFICES

USD 491 School Board Member At-Large Vote for Three or Fewer

MUNICIPAL OFFICES

Eudora City Mayor Vote for One

- Tom Pyle Eudora
Jean Farmer Eudora
Scott Hopson Eudora
Write-in

Eudora City Council Vote for Two or Fewer

- Tonya Summers Eudora
Mike Warner Eudora
William J. Whitten Eudora
Brian W. Nyp Eudora
Tim Reazin Eudora
Write-in
Write-in

- Eric D. Votaw Eudora
Brenda Clark Eudora
Daniel S. Dickerson Eudora
Mike Howard Eudora
Michael P. Kelso Eudora
Keith Nowland Eudora
Write-in
Write-in
Write-in

A Precinct 53 Split 4 B Typ:01 Seq:0053 Spl:04 C

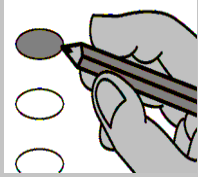
A Precinct 54 Split 1 B State of Kansas C Douglas County

Instructions to Voter

Notice: If you tear, deface or make a mistake and wrongfully mark any ballot, you must return it to the election board and receive a new ballot or set of ballots.

To vote for a person darken the oval at the left of the person's name. To vote for a person whose name is not printed on the ballot, write the person's name in the blank space and darken the oval to the left.

To vote you must darken the oval completely



USD OFFICES

USD 491 School Board Member At-Large Vote for Three or Fewer

- Brenda Clark Eudora
Daniel S. Dickerson Eudora
Mike Howard Eudora
Michael P. Kelso Eudora
Keith Nowland Eudora
Eric D. Votaw Eudora

- Write-in
Write-in
Write-in

A Precinct 54 Split 1 B Typ:01 Seq:0054 Spl:01 C

A Precinct 54 Split 2 B State of Kansas C Douglas County

Instructions to Voter

! Notice: If you tear, deface or make a mistake and wrongfully mark any ballot, you must return it to the election board and receive a new ballot or set of ballots.

➔ To vote for a person darken the oval at the left of the person's name. To vote for a person whose name is not printed on the ballot, write the person's name in the blank space and darken the oval to the left.



USD OFFICES

USD 491 School Board Member
At-Large
Vote for Three or Fewer

MUNICIPAL OFFICES

Eudora City Mayor
Vote for One

- Jean Farmer** Eudora
- Scott Hopson** Eudora
- Tom Pyle** Eudora
- _____
Write-in

Eudora City Council
Vote for Two or Fewer

- Mike Warner** Eudora
- William J. Whitten** Eudora
- Brian W. Nyp** Eudora
- Tim Reazin** Eudora
- Tonya Summers** Eudora
- _____
Write-in
- _____
Write-in

- Daniel S. Dickerson** Eudora
- Mike Howard** Eudora
- Michael P. Kelso** Eudora
- Keith Nowland** Eudora
- Eric D. Votaw** Eudora
- Brenda Clark** Eudora
- _____
Write-in
- _____
Write-in
- _____
Write-in

A Precinct 54 Split 2 B Typ:01 Seq:0054 Spl:02 C

A Precinct 55 B State of Kansas C Douglas County

Instructions to Voter

Notice: If you tear, deface or make a mistake and wrongfully mark any ballot, you must return it to the election board and receive a new ballot or set of ballots.

To vote for a person darken the oval at the left of the person's name. To vote for a person whose name is not printed on the ballot, write the person's name in the blank space and darken the oval to the left.



USD OFFICES

USD 497 School Board Member At-Large Vote for Three or Fewer

Michael L. Pomes Lawrence

Michael Riley Lawrence

Vanessa Sanburn Lawrence

Mark F. Bradford Lawrence

Robert Byers Lawrence

Tom Hartley Lawrence

Thom Hepford Lawrence

John W. Mitchell Lawrence

Write-in

Write-in

Write-in

A Precinct 55 B Typ:01 Seq:0055 Spl:01 C

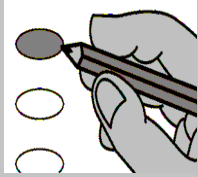
A Precinct 56 Split 1 B State of Kansas C Douglas County

Instructions to Voter

Notice: If you tear, deface or make a mistake and wrongfully mark any ballot, you must return it to the election board and receive a new ballot or set of ballots.

To vote for a person darken the oval at the left of the person's name. To vote for a person whose name is not printed on the ballot, write the person's name in the blank space and darken the oval to the left.

To vote you must darken the oval completely



USD OFFICES

USD 343 School Board Member USD 343 Position 4 Vote for One

Kevin Morgison Perry

Write-in

USD 343 School Board Member USD 343 Position 5 Vote for One

Joshua R. Meyer Perry

Michael Miller Perry

Monicka Remboldt Perry

Write-in

USD 343 School Board Member USD 343 Position 6 Vote for One

Write-in

A Precinct 56 Split 1 B Typ:01 Seq:0056 Spl:01 C

A Precinct 56 Split 2 B State of Kansas C Douglas County

Instructions to Voter

Notice: If you tear, deface or make a mistake and wrongfully mark any ballot, you must return it to the election board and receive a new ballot or set of ballots.

To vote for a person darken the oval at the left of the person's name. To vote for a person whose name is not printed on the ballot, write the person's name in the blank space and darken the oval to the left.



USD OFFICES

USD 450 School Board Member USD 450 Dist. A Position 4 Vote for One

- Gene L. Edwards Topeka
Jason C. Crawford Topeka
Write-in

USD 450 School Board Member USD 450 Dist. B Position 5 Vote for One

- Jim Zimmerman Topeka
Write-in

USD 450 School Board Member USD 450 Dist. C Position 6 Vote for One

- Steve Walker Topeka
Write-in

A Precinct 56 Split 2 B Typ:01 Seq:0056 Spl:02 C

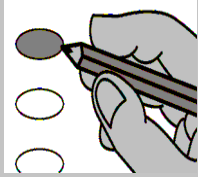
A Precinct 56 Split 3 B State of Kansas C Douglas County

Instructions to Voter

Notice: If you tear, deface or make a mistake and wrongfully mark any ballot, you must return it to the election board and receive a new ballot or set of ballots.

To vote for a person darken the oval at the left of the person's name. To vote for a person whose name is not printed on the ballot, write the person's name in the blank space and darken the oval to the left.

To vote you must darken the oval completely



USD OFFICES

USD 497 School Board Member At-Large Vote for Three or Fewer

Michael Riley Lawrence

Vanessa Sanburn Lawrence

Mark F. Bradford Lawrence

Robert Byers Lawrence

Tom Hartley Lawrence

Thom Hepford Lawrence

John W. Mitchell Lawrence

Michael L. Pomes Lawrence

Write-in

Write-in

Write-in

A Precinct 56 Split 3 B Typ:01 Seq:0056 Spl:03 C

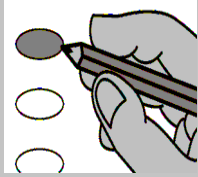
A Precinct 57 Split 1 B State of Kansas C Douglas County

Instructions to Voter

Notice: If you tear, deface or make a mistake and wrongfully mark any ballot, you must return it to the election board and receive a new ballot or set of ballots.

To vote for a person darken the oval at the left of the person's name. To vote for a person whose name is not printed on the ballot, write the person's name in the blank space and darken the oval to the left.

To vote you must darken the oval completely



USD OFFICES

USD 343 School Board Member USD 343 Position 4 Vote for One

Kevin Morgison Perry

Write-in

USD 343 School Board Member USD 343 Position 5 Vote for One

Michael Miller Perry

Monicka Remboldt Perry

Joshua R. Meyer Perry

Write-in

USD 343 School Board Member USD 343 Position 6 Vote for One

Write-in

A Precinct 57 Split 1 B Typ:01 Seq:0057 Spl:01 C

A Precinct 57 Split 2 B State of Kansas C Douglas County

Instructions to Voter

Notice: If you tear, deface or make a mistake and wrongfully mark any ballot, you must return it to the election board and receive a new ballot or set of ballots.

To vote for a person darken the oval at the left of the person's name. To vote for a person whose name is not printed on the ballot, write the person's name in the blank space and darken the oval to the left.



To vote you must darken the oval completely

USD OFFICES

USD 343 School Board Member USD 343 Position 6 Vote for One



Write-in

MUNICIPAL OFFICES

Lecompton City Mayor Vote for One



Roy Paslay

Lecompton



Write-in

Lecompton City Council Vote for Two or Fewer



Tim J. McNish

Lecompton



Mark L. Tunstall

Lecompton



Write-in



Write-in

USD OFFICES

USD 343 School Board Member USD 343 Position 4 Vote for One



Kevin Morgison

Perry



Write-in

USD 343 School Board Member USD 343 Position 5 Vote for One



Monicka Remboldt

Perry



Joshua R. Meyer

Perry



Michael Miller

Perry



Write-in

A Precinct 57 Split 2 B Typ:01 Seq:0057 Spl:02 C

A Precinct 57 Split 3 B State of Kansas C Douglas County

Instructions to Voter

Notice: If you tear, deface or make a mistake and wrongfully mark any ballot, you must return it to the election board and receive a new ballot or set of ballots.

To vote for a person darken the oval at the left of the person's name. To vote for a person whose name is not printed on the ballot, write the person's name in the blank space and darken the oval to the left.



USD OFFICES

USD 343 School Board Member USD 343 Position 4 Vote for One

- Kevin Morgison Perry
Write-in

USD 343 School Board Member USD 343 Position 5 Vote for One

- Joshua R. Meyer Perry
Michael Miller Perry
Monicka Remboldt Perry
Write-in

USD 343 School Board Member USD 343 Position 6 Vote for One

- Write-in

A Precinct 57 Split 3 B Typ:01 Seq:0057 Spl:03 C

A Precinct 58 Split 1 B State of Kansas C Douglas County

Instructions to Voter

Notice: If you tear, deface or make a mistake and wrongfully mark any ballot, you must return it to the election board and receive a new ballot or set of ballots.

To vote for a person darken the oval at the left of the person's name. To vote for a person whose name is not printed on the ballot, write the person's name in the blank space and darken the oval to the left.



USD OFFICES

USD 343 School Board Member USD 343 Position 4 Vote for One

Kevin Morgison Perry

Write-in

USD 343 School Board Member USD 343 Position 5 Vote for One

Michael Miller Perry

Monicka Remboldt Perry

Joshua R. Meyer Perry

Write-in

USD 343 School Board Member USD 343 Position 6 Vote for One

Write-in

A Precinct 58 Split 1 B Typ:01 Seq:0058 Spl:01 C

A Precinct 58 Split 2 B State of Kansas C Douglas County

Instructions to Voter

Notice: If you tear, deface or make a mistake and wrongfully mark any ballot, you must return it to the election board and receive a new ballot or set of ballots.

To vote for a person darken the oval at the left of the person's name. To vote for a person whose name is not printed on the ballot, write the person's name in the blank space and darken the oval to the left.



USD OFFICES

USD 450 School Board Member USD 450 Dist. A Position 4 Vote for One

- Jason C. Crawford Topeka
Gene L. Edwards Topeka
Write-in

USD 450 School Board Member USD 450 Dist. B Position 5 Vote for One

- Jim Zimmerman Topeka
Write-in

USD 450 School Board Member USD 450 Dist. C Position 6 Vote for One

- Steve Walker Topeka
Write-in

A Precinct 58 Split 2 B Typ:01 Seq:0058 Spl:02 C

A Precinct 59 Split 1&4 B State of Kansas C Douglas County

Instructions to Voter

Notice: If you tear, deface or make a mistake and wrongfully mark any ballot, you must return it to the election board and receive a new ballot or set of ballots.

To vote for a person darken the oval at the left of the person's name. To vote for a person whose name is not printed on the ballot, write the person's name in the blank space and darken the oval to the left.



USD OFFICES

USD 348 School Board Member USD 348 Dist. 1 Position 4 Vote for One

Ruth C. Barkley Baldwin City



Write-in

USD 348 School Board Member USD 348 Dist. 2 Position 5 Vote for One

Bill Busby Baldwin City



Write-in

USD 348 School Board Member USD 348 Dist. 3 Position 6 Vote for One

Ande Parks Baldwin City



Write-in

A Precinct 59 Split 1&4 B Typ:01 Seq:0059 Spl:01 C

A Precinct 59 Split 2 B State of Kansas C Douglas County

Instructions to Voter

Notice: If you tear, deface or make a mistake and wrongfully mark any ballot, you must return it to the election board and receive a new ballot or set of ballots.

To vote for a person darken the oval at the left of the person's name. To vote for a person whose name is not printed on the ballot, write the person's name in the blank space and darken the oval to the left.



USD OFFICES

USD 434 School Board Member USD 434 Position 4 Vote for One

- Brad Fischer Overbrook Zachary J.C. Anshutz Overbrook

Write-in

USD 434 School Board Member USD 434 Position 5 Vote for One

- Randy Boudeman Carbondale

Write-in

USD 434 School Board Member USD 434 Position 6 Vote for One

- Shandy L. Vollrath Scranton Chris Kendall Scranton

Write-in

A Precinct 59 Split 2 B Typ:01 Seq:0059 Spl:02 C

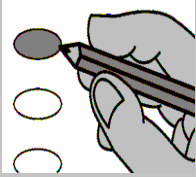
A Precinct 59 Split 3 B State of Kansas C Douglas County

Instructions to Voter

Notice: If you tear, deface or make a mistake and wrongfully mark any ballot, you must return it to the election board and receive a new ballot or set of ballots.

To vote for a person darken the oval at the left of the person's name. To vote for a person whose name is not printed on the ballot, write the person's name in the blank space and darken the oval to the left.

To vote you must darken the oval completely



USD OFFICES

USD 497 School Board Member At-Large Vote for Three or Fewer

Vanessa Sanburn Lawrence

Mark F. Bradford Lawrence

Robert Byers Lawrence

Tom Hartley Lawrence

Thom Hepford Lawrence

John W. Mitchell Lawrence

Michael L. Pomes Lawrence

Michael Riley Lawrence

Write-in

Write-in

Write-in

A Precinct 59 Split 3 B Typ:01 Seq:0059 Spl:03 C

A Precinct 60 Split 1 B State of Kansas C Douglas County

Instructions to Voter

Notice: If you tear, deface or make a mistake and wrongfully mark any ballot, you must return it to the election board and receive a new ballot or set of ballots.

To vote for a person darken the oval at the left of the person's name. To vote for a person whose name is not printed on the ballot, write the person's name in the blank space and darken the oval to the left.



USD OFFICES

USD 348 School Board Member USD 348 Dist. 1 Position 4 Vote for One

Ruth C. Barkley Baldwin City

Write-in

USD 348 School Board Member USD 348 Dist. 2 Position 5 Vote for One

Bill Busby Baldwin City

Write-in

USD 348 School Board Member USD 348 Dist. 3 Position 6 Vote for One

Ande Parks Baldwin City

Write-in

A Precinct 60 Split 1 B Typ:01 Seq:0060 Spl:01 C

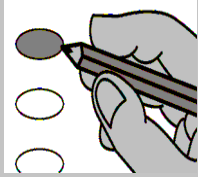
A Precinct 60 Split 2&3 B State of Kansas C Douglas County

Instructions to Voter

Notice: If you tear, deface or make a mistake and wrongfully mark any ballot, you must return it to the election board and receive a new ballot or set of ballots.

To vote for a person darken the oval at the left of the person's name. To vote for a person whose name is not printed on the ballot, write the person's name in the blank space and darken the oval to the left.

To vote you must darken the oval completely



USD OFFICES

USD 348 School Board Member USD 348 Dist. 2 Position 5 Vote for One

Bill Busby Baldwin City

Write-in

MUNICIPAL OFFICES

Baldwin City Mayor Vote for One

George A. McCrary Baldwin City

Gary L. Walbridge Baldwin City

Ken Wagner Baldwin City

Write-in

USD 348 School Board Member USD 348 Dist. 3 Position 6 Vote for One

Ande Parks Baldwin City

Write-in

Baldwin City Council Vote for Two or Fewer

Tom Farmer Baldwin City

Ric Gere Baldwin City

Russ Gill Baldwin City

Chris Nichols Baldwin City

Bonnie Plumberg Baldwin City

Write-in

Write-in

USD OFFICES

USD 348 School Board Member USD 348 Dist. 1 Position 4 Vote for One

Ruth C. Barkley Baldwin City

Write-in

A Precinct 60 Split 2&3 B Typ:01 Seq:0060 Spl:02 C

A Precinct 61 Split 1 B State of Kansas C Douglas County

Instructions to Voter

Notice: If you tear, deface or make a mistake and wrongfully mark any ballot, you must return it to the election board and receive a new ballot or set of ballots.

To vote for a person darken the oval at the left of the person's name. To vote for a person whose name is not printed on the ballot, write the person's name in the blank space and darken the oval to the left.



USD OFFICES

USD 289 School Board Member USD 289 Position 4 Vote for One

- Ron Bloss Wellsville Write-in

USD 289 School Board Member USD 289 Position 5 Vote for One

- Clyde Coons Wellsville Lou Meyer Wellsville Write-in

USD 289 School Board Member USD 289 Position 6 Vote for One

- Juanita Peckham Wellsville Write-in

A Precinct 61 Split 1 B Typ:01 Seq:0061 Spl:01 C

A Precinct 61 Split 2 B State of Kansas C Douglas County

Instructions to Voter

Notice: If you tear, deface or make a mistake and wrongfully mark any ballot, you must return it to the election board and receive a new ballot or set of ballots.

To vote for a person darken the oval at the left of the person's name. To vote for a person whose name is not printed on the ballot, write the person's name in the blank space and darken the oval to the left.



USD OFFICES

USD 348 School Board Member USD 348 Dist. 1 Position 4 Vote for One

Ruth C. Barkley Baldwin City



Write-in

USD 348 School Board Member USD 348 Dist. 2 Position 5 Vote for One

Bill Busby Baldwin City



Write-in

USD 348 School Board Member USD 348 Dist. 3 Position 6 Vote for One

Ande Parks Baldwin City



Write-in

A Precinct 61 Split 2 B Typ:01 Seq:0061 Spl:02 C

A Precinct 61 Split 3&4 B State of Kansas C Douglas County

Instructions to Voter

Notice: If you tear, deface or make a mistake and wrongfully mark any ballot, you must return it to the election board and receive a new ballot or set of ballots.

To vote for a person darken the oval at the left of the person's name. To vote for a person whose name is not printed on the ballot, write the person's name in the blank space and darken the oval to the left.



To vote you must darken the oval completely

USD OFFICES

USD 348 School Board Member USD 348 Dist. 2 Position 5 Vote for One

Bill Busby Baldwin City

Write-in

MUNICIPAL OFFICES

Baldwin City Mayor Vote for One

Gary L. Walbridge Baldwin City

Ken Wagner Baldwin City

George A. McCrary Baldwin City

Write-in

USD 348 School Board Member USD 348 Dist. 3 Position 6 Vote for One

Ande Parks Baldwin City

Write-in

Baldwin City Council Vote for Two or Fewer

Ric Gere Baldwin City

Russ Gill Baldwin City

Chris Nichols Baldwin City

Bonnie Plumberg Baldwin City

Tom Farmer Baldwin City

Write-in

Write-in

USD OFFICES

USD 348 School Board Member USD 348 Dist. 1 Position 4 Vote for One

Ruth C. Barkley Baldwin City

Write-in

A Precinct 61 Split 3&4 B Typ:01 Seq:0061 Spl:03 C

A Precinct 62 Split 1 B State of Kansas C Douglas County

Instructions to Voter

Notice: If you tear, deface or make a mistake and wrongfully mark any ballot, you must return it to the election board and receive a new ballot or set of ballots.

To vote for a person darken the oval at the left of the person's name. To vote for a person whose name is not printed on the ballot, write the person's name in the blank space and darken the oval to the left.



USD OFFICES

USD 289 School Board Member USD 289 Position 4 Vote for One

- Ron Bloss Wellsville Write-in

USD 289 School Board Member USD 289 Position 5 Vote for One

- Lou Meyer Wellsville Clyde Coons Wellsville Write-in

USD 289 School Board Member USD 289 Position 6 Vote for One

- Juanita Peckham Wellsville Write-in

A Precinct 62 Split 1 B Typ:01 Seq:0062 Spl:01 C

A Precinct 62 Split 2&4 B State of Kansas C Douglas County

Instructions to Voter

Notice: If you tear, deface or make a mistake and wrongfully mark any ballot, you must return it to the election board and receive a new ballot or set of ballots.

To vote for a person darken the oval at the left of the person's name. To vote for a person whose name is not printed on the ballot, write the person's name in the blank space and darken the oval to the left.



USD OFFICES

USD 348 School Board Member USD 348 Dist. 1 Position 4 Vote for One

Ruth C. Barkley Baldwin City

Write-in

USD 348 School Board Member USD 348 Dist. 2 Position 5 Vote for One

Bill Busby Baldwin City

Write-in

USD 348 School Board Member USD 348 Dist. 3 Position 6 Vote for One

Ande Parks Baldwin City

Write-in

A Precinct 62 Split 2&4 B Typ:01 Seq:0062 Spl:02 C

A Precinct 62 Split 3&5 B State of Kansas C Douglas County

Instructions to Voter

! Notice: If you tear, deface or make a mistake and wrongfully mark any ballot, you must return it to the election board and receive a new ballot or set of ballots.

➔ To vote for a person darken the oval at the left of the person's name. To vote for a person whose name is not printed on the ballot, write the person's name in the blank space and darken the oval to the left.



USD OFFICES

USD 348 School Board Member
USD 348 Dist. 2 Position 5
Vote for One

Bill Busby Baldwin City

Write-in

MUNICIPAL OFFICES

Baldwin City Mayor
Vote for One

Ken Wagner Baldwin City

George A. McCrary Baldwin City

Gary L. Walbridge Baldwin City

Write-in

USD 348 School Board Member
USD 348 Dist. 3 Position 6
Vote for One

Ande Parks Baldwin City

Write-in

Baldwin City Council
Vote for Two or Fewer

Russ Gill Baldwin City

Chris Nichols Baldwin City

Bonnie Plumberg Baldwin City

Tom Farmer Baldwin City

Ric Gere Baldwin City

Write-in

Write-in

USD OFFICES

USD 348 School Board Member
USD 348 Dist. 1 Position 4
Vote for One

Ruth C. Barkley Baldwin City

Write-in

A Precinct 62 Split 3&5 B Typ:01 Seq:0062 Spl:03 C

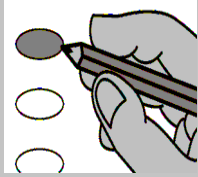
A Precinct 63 Split 1 B State of Kansas C Douglas County

Instructions to Voter

Notice: If you tear, deface or make a mistake and wrongfully mark any ballot, you must return it to the election board and receive a new ballot or set of ballots.

To vote for a person darken the oval at the left of the person's name. To vote for a person whose name is not printed on the ballot, write the person's name in the blank space and darken the oval to the left.

To vote you must darken the oval completely



USD OFFICES

USD 289 School Board Member USD 289 Position 4 Vote for One

Ron Bloss Wellsville

Write-in

USD 289 School Board Member USD 289 Position 5 Vote for One

Clyde Coons Wellsville

Lou Meyer Wellsville

Write-in

USD 289 School Board Member USD 289 Position 6 Vote for One

Juanita Peckham Wellsville

Write-in

A Precinct 63 Split 1 B Typ:01 Seq:0063 Spl:01 C

A Precinct 63 Split 2&3 B State of Kansas C Douglas County

Instructions to Voter

Notice: If you tear, deface or make a mistake and wrongfully mark any ballot, you must return it to the election board and receive a new ballot or set of ballots.

To vote for a person darken the oval at the left of the person's name. To vote for a person whose name is not printed on the ballot, write the person's name in the blank space and darken the oval to the left.



USD OFFICES

USD 348 School Board Member USD 348 Dist. 1 Position 4 Vote for One

Ruth C. Barkley Baldwin City

Write-in

USD 348 School Board Member USD 348 Dist. 2 Position 5 Vote for One

Bill Busby Baldwin City

Write-in

USD 348 School Board Member USD 348 Dist. 3 Position 6 Vote for One

Ande Parks Baldwin City

Write-in

A Precinct 63 Split 2&3 B Typ:01 Seq:0063 Spl:02 C

A Precinct 64 Split 1 B State of Kansas C Douglas County

Instructions to Voter

Notice: If you tear, deface or make a mistake and wrongfully mark any ballot, you must return it to the election board and receive a new ballot or set of ballots.

To vote for a person darken the oval at the left of the person's name. To vote for a person whose name is not printed on the ballot, write the person's name in the blank space and darken the oval to the left.



USD OFFICES

USD 343 School Board Member USD 343 Position 4 Vote for One

Kevin Morgison Perry

Write-in

USD 343 School Board Member USD 343 Position 5 Vote for One

Monicka Remboldt Perry

Joshua R. Meyer Perry

Michael Miller Perry

Write-in

USD 343 School Board Member USD 343 Position 6 Vote for One

Write-in

A Precinct 64 Split 1 B Typ:01 Seq:0064 Spl:01 C

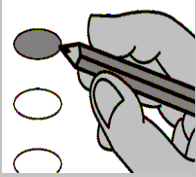
A Precinct 64 Split 2 B State of Kansas C Douglas County

Instructions to Voter

Notice: If you tear, deface or make a mistake and wrongfully mark any ballot, you must return it to the election board and receive a new ballot or set of ballots.

To vote for a person darken the oval at the left of the person's name. To vote for a person whose name is not printed on the ballot, write the person's name in the blank space and darken the oval to the left.

To vote you must darken the oval completely



USD OFFICES

USD 497 School Board Member At-Large Vote for Three or Fewer

Mark F. Bradford Lawrence

Robert Byers Lawrence

Tom Hartley Lawrence

Thom Hepford Lawrence

John W. Mitchell Lawrence

Michael L. Pomes Lawrence

Michael Riley Lawrence

Vanessa Sanburn Lawrence

Write-in

Write-in

Write-in

A Precinct 64 Split 2 B Typ:01 Seq:0064 Spl:02 C

A Precinct 65 Split 1&4 B State of Kansas C Douglas County

Instructions to Voter

Notice: If you tear, deface or make a mistake and wrongfully mark any ballot, you must return it to the election board and receive a new ballot or set of ballots.

To vote for a person darken the oval at the left of the person's name. To vote for a person whose name is not printed on the ballot, write the person's name in the blank space and darken the oval to the left.



USD OFFICES

USD 348 School Board Member USD 348 Dist. 1 Position 4 Vote for One

Ruth C. Barkley Baldwin City



Write-in

USD 348 School Board Member USD 348 Dist. 2 Position 5 Vote for One

Bill Busby Baldwin City



Write-in

USD 348 School Board Member USD 348 Dist. 3 Position 6 Vote for One

Ande Parks Baldwin City



Write-in

A Precinct 65 Split 1&4 B Typ:01 Seq:0065 Spl:01 C

A Precinct 65 Split 2&3 B State of Kansas C Douglas County

Instructions to Voter

Notice: If you tear, deface or make a mistake and wrongfully mark any ballot, you must return it to the election board and receive a new ballot or set of ballots.

To vote for a person darken the oval at the left of the person's name. To vote for a person whose name is not printed on the ballot, write the person's name in the blank space and darken the oval to the left.



USD OFFICES

USD 497 School Board Member At-Large Vote for Three or Fewer

Robert Byers Lawrence

Tom Hartley Lawrence

Thom Hepford Lawrence

John W. Mitchell Lawrence

Michael L. Pomes Lawrence

Michael Riley Lawrence

Vanessa Sanburn Lawrence

Mark F. Bradford Lawrence

Write-in

Write-in

Write-in

A Precinct 65 Split 2&3 B Typ:01 Seq:0065 Spl:02 C

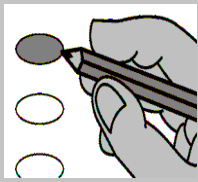
A Precinct 66 Split 1&2&3 B State of Kansas C Douglas County

Instructions to Voter

Notice: If you tear, deface or make a mistake and wrongfully mark any ballot, you must return it to the election board and receive a new ballot or set of ballots.

To vote for a person darken the oval at the left of the person's name. To vote for a person whose name is not printed on the ballot, write the person's name in the blank space and darken the oval to the left.

To vote you must darken the oval completely



USD OFFICES

USD 497 School Board Member At-Large Vote for Three or Fewer

John W. Mitchell Lawrence

Michael L. Pomes Lawrence

Michael Riley Lawrence

Vanessa Sanburn Lawrence

Mark F. Bradford Lawrence

Robert Byers Lawrence

Tom Hartley Lawrence

Thom Hepford Lawrence

Write-in

Write-in

Write-in

A Precinct 66 Split 1&2&3 B Typ:01 Seq:0066 Spl:01 C

A Precinct 67 Split 1&2 B State of Kansas C Douglas County

Instructions to Voter

Notice: If you tear, deface or make a mistake and wrongfully mark any ballot, you must return it to the election board and receive a new ballot or set of ballots.

To vote for a person darken the oval at the left of the person's name. To vote for a person whose name is not printed on the ballot, write the person's name in the blank space and darken the oval to the left.



USD OFFICES

USD 348 School Board Member USD 348 Dist. 1 Position 4 Vote for One

Ruth C. Barkley Baldwin City

Write-in

USD 348 School Board Member USD 348 Dist. 2 Position 5 Vote for One

Bill Busby Baldwin City

Write-in

USD 348 School Board Member USD 348 Dist. 3 Position 6 Vote for One

Ande Parks Baldwin City

Write-in

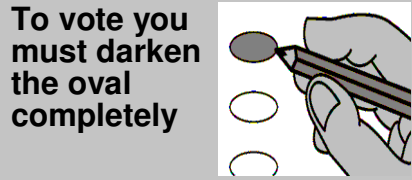
A Precinct 67 Split 1&2 B Typ:01 Seq:0067 Spl:01 C

A Precinct 67 Split 3 B State of Kansas C Douglas County

Instructions to Voter

Notice: If you tear, deface or make a mistake and wrongfully mark any ballot, you must return it to the election board and receive a new ballot or set of ballots.

To vote for a person darken the oval at the left of the person's name. To vote for a person whose name is not printed on the ballot, write the person's name in the blank space and darken the oval to the left.



USD OFFICES

USD 497 School Board Member At-Large Vote for Three or Fewer

Thom Hepford Lawrence

John W. Mitchell Lawrence

Michael L. Pomes Lawrence

Michael Riley Lawrence

Vanessa Sanburn Lawrence

Mark F. Bradford Lawrence

Robert Byers Lawrence

Tom Hartley Lawrence

Write-in

Write-in

Write-in

A Precinct 67 Split 3 B Typ:01 Seq:0067 Spl:02 C