

Official Primary Election Ballot

A	State of Kansas	B	Douglas County	C	August 1, 2017
---	-----------------	---	----------------	---	----------------

! Notice: If you tear, deface, or make a mistake and wrongfully mark any ballot, you must return it to the election board and receive a new ballot.

Making selections



Use black or blue ball point pen to darken oval completely.
To vote for a person, darken the oval to the left of the person's name.
Follow instructions on number of votes allowed for each race.

MUNICIPAL OFFICES

Lawrence City Commission
Vote for THREE(3) or FEWER

- Mike Anderson**
Lawrence
- Bassem Chahine**
Lawrence
- Ken Easthouse**
Lawrence
- Matthew Herbert**
Lawrence
- Lisa Larsen**
Lawrence
- Christian Lyche**
Lawrence
- Dustin Stumblingbear**
Lawrence
- Jennifer Ananda**
Lawrence

Thank you for voting.

Please take time to review your ballot before casting it; you may request a replacement ballot if necessary.

A	Precinct 1	B		C	
---	------------	---	--	---	--

Official Primary Election Ballot

A	State of Kansas	B	Douglas County	C	August 1, 2017
---	-----------------	---	----------------	---	----------------

! Notice: If you tear, deface, or make a mistake and wrongfully mark any ballot, you must return it to the election board and receive a new ballot.

Making selections



Use black or blue ball point pen to darken oval completely.
To vote for a person, darken the oval to the left of the person's name.
Follow instructions on number of votes allowed for each race.

MUNICIPAL OFFICES

Lawrence City Commission
Vote for THREE(3) or FEWER

- Jennifer Ananda**
Lawrence
- Mike Anderson**
Lawrence
- Bassem Chahine**
Lawrence
- Ken Easthouse**
Lawrence
- Matthew Herbert**
Lawrence
- Lisa Larsen**
Lawrence
- Christian Lyche**
Lawrence
- Dustin Stumblingbear**
Lawrence

Thank you for voting.

Please take time to review your ballot before casting it; you may request a replacement ballot if necessary.

A	Precinct 2	B		C	
---	------------	---	--	---	--

Official Primary Election Ballot

A	State of Kansas	B	Douglas County	C	August 1, 2017
---	-----------------	---	----------------	---	----------------

! Notice: If you tear, deface, or make a mistake and wrongfully mark any ballot, you must return it to the election board and receive a new ballot.

Making selections



Use black or blue ball point pen to darken oval completely.

To vote for a person, darken the oval to the left of the person's name.

Follow instructions on number of votes allowed for each race.

MUNICIPAL OFFICES

Lawrence City Commission
Vote for THREE(3) or FEWER

- Bassem Chahine**
Lawrence
- Ken Easthouse**
Lawrence
- Matthew Herbert**
Lawrence
- Lisa Larsen**
Lawrence
- Christian Lyche**
Lawrence
- Dustin Stumblingbear**
Lawrence
- Jennifer Ananda**
Lawrence
- Mike Anderson**
Lawrence

Thank you for voting.

Please take time to review your ballot before casting it; you may request a replacement ballot if necessary.

A	Precinct 3	B		C	
---	------------	---	--	---	--

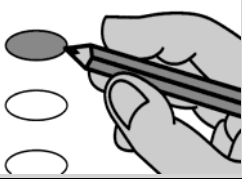
Official Primary Election Ballot

A	State of Kansas	B	Douglas County	C	August 1, 2017
---	-----------------	---	----------------	---	----------------



Notice: If you tear, deface, or make a mistake and wrongfully mark any ballot, you must return it to the election board and receive a new ballot.

Making selections



Use black or blue ball point pen to darken oval completely.

To vote for a person, darken the oval to the left of the person's name.

Follow instructions on number of votes allowed for each race.

MUNICIPAL OFFICES

Lawrence City Commission
Vote for THREE(3) or FEWER

- Mike Anderson**
Lawrence
- Bassem Chahine**
Lawrence
- Ken Easthouse**
Lawrence
- Matthew Herbert**
Lawrence
- Lisa Larsen**
Lawrence
- Christian Lyche**
Lawrence
- Dustin Stumblingbear**
Lawrence
- Jennifer Ananda**
Lawrence

Thank you for voting.

Please take time to review your ballot before casting it; you may request a replacement ballot if necessary.

A	Precinct 4	B		C	
---	------------	---	--	---	--

Official Primary Election Ballot

A	State of Kansas	B	Douglas County	C	August 1, 2017
---	-----------------	---	----------------	---	----------------

! Notice: If you tear, deface, or make a mistake and wrongfully mark any ballot, you must return it to the election board and receive a new ballot.

Making selections
Use black or blue ball point pen to darken oval completely.
To vote for a person, darken the oval to the left of the person's name.
Follow instructions on number of votes allowed for each race.

MUNICIPAL OFFICES

Lawrence City Commission
Vote for THREE(3) or FEWER

- Matthew Herbert**
Lawrence
- Lisa Larsen**
Lawrence
- Christian Lyche**
Lawrence
- Dustin Stumblingbear**
Lawrence
- Jennifer Ananda**
Lawrence
- Mike Anderson**
Lawrence
- Bassem Chahine**
Lawrence
- Ken Easthouse**
Lawrence

Thank you for voting.
Please take time to review your ballot before casting it; you may request a replacement ballot if necessary.

A	Precinct 5	B		C	
---	------------	---	--	---	--

Official Primary Election Ballot

A	State of Kansas	B	Douglas County	C	August 1, 2017
---	-----------------	---	----------------	---	----------------

! Notice: If you tear, deface, or make a mistake and wrongfully mark any ballot, you must return it to the election board and receive a new ballot.

Making selections



Use black or blue ball point pen to darken oval completely.

To vote for a person, darken the oval to the left of the person's name.

Follow instructions on number of votes allowed for each race.

MUNICIPAL OFFICES

Lawrence City Commission
Vote for THREE(3) or FEWER

- Lisa Larsen** Lawrence
- Christian Lyche** Lawrence
- Dustin Stumblingbear** Lawrence
- Jennifer Ananda** Lawrence
- Mike Anderson** Lawrence
- Bassem Chahine** Lawrence
- Ken Easthouse** Lawrence
- Matthew Herbert** Lawrence

Thank you for voting.

Please take time to review your ballot before casting it; you may request a replacement ballot if necessary.

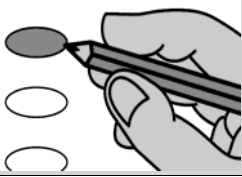
A	Precinct 6	B		C	
---	------------	---	--	---	--

Official Primary Election Ballot

A	State of Kansas	B	Douglas County	C	August 1, 2017
---	-----------------	---	----------------	---	----------------

! Notice: If you tear, deface, or make a mistake and wrongfully mark any ballot, you must return it to the election board and receive a new ballot.

Making selections



Use black or blue ball point pen to darken oval completely.
To vote for a person, darken the oval to the left of the person's name.
Follow instructions on number of votes allowed for each race.

MUNICIPAL OFFICES

Lawrence City Commission
Vote for THREE(3) or FEWER

- Christian Lyche**
Lawrence
- Dustin Stumblingbear**
Lawrence
- Jennifer Ananda**
Lawrence
- Mike Anderson**
Lawrence
- Bassem Chahine**
Lawrence
- Ken Easthouse**
Lawrence
- Matthew Herbert**
Lawrence
- Lisa Larsen**
Lawrence

Thank you for voting.

Please take time to review your ballot before casting it; you may request a replacement ballot if necessary.

A	Precinct 7	B		C	
---	------------	---	--	---	--

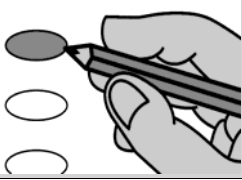
Official Primary Election Ballot

A	State of Kansas	B	Douglas County	C	August 1, 2017
---	-----------------	---	----------------	---	----------------



Notice: If you tear, deface, or make a mistake and wrongfully mark any ballot, you must return it to the election board and receive a new ballot.

Making selections



Use black or blue ball point pen to darken oval completely.

To vote for a person, darken the oval to the left of the person's name.

Follow instructions on number of votes allowed for each race.

MUNICIPAL OFFICES

Lawrence City Commission
Vote for THREE(3) or FEWER

- Dustin Stumblingbear**
Lawrence
- Jennifer Ananda**
Lawrence
- Mike Anderson**
Lawrence
- Bassem Chahine**
Lawrence
- Ken Easthouse**
Lawrence
- Matthew Herbert**
Lawrence
- Lisa Larsen**
Lawrence
- Christian Lyche**
Lawrence

Thank you for voting.

Please take time to review your ballot before casting it; you may request a replacement ballot if necessary.

A	Precinct 8	B		C	
---	------------	---	--	---	--

Official Primary Election Ballot

A	State of Kansas	B	Douglas County	C	August 1, 2017
---	-----------------	---	----------------	---	----------------

! Notice: If you tear, deface, or make a mistake and wrongfully mark any ballot, you must return it to the election board and receive a new ballot.

Making selections



Use black or blue ball point pen to darken oval completely.

To vote for a person, darken the oval to the left of the person's name.

Follow instructions on number of votes allowed for each race.

MUNICIPAL OFFICES

Lawrence City Commission
Vote for THREE(3) or FEWER

- Jennifer Ananda**
Lawrence
- Mike Anderson**
Lawrence
- Bassem Chahine**
Lawrence
- Ken Easthouse**
Lawrence
- Matthew Herbert**
Lawrence
- Lisa Larsen**
Lawrence
- Christian Lyche**
Lawrence
- Dustin Stumblingbear**
Lawrence

Thank you for voting.

Please take time to review your ballot before casting it; you may request a replacement ballot if necessary.

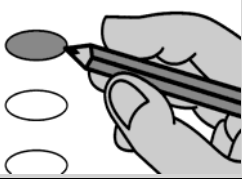
A	Precinct 9	B		C	
---	------------	---	--	---	--

Official Primary Election Ballot

A	State of Kansas	B	Douglas County	C	August 1, 2017
---	-----------------	---	----------------	---	----------------

! Notice: If you tear, deface, or make a mistake and wrongfully mark any ballot, you must return it to the election board and receive a new ballot.

Making selections



Use black or blue ball point pen to darken oval completely.

To vote for a person, darken the oval to the left of the person's name.

Follow instructions on number of votes allowed for each race.

MUNICIPAL OFFICES

Lawrence City Commission
Vote for THREE(3) or FEWER

- Mike Anderson**
Lawrence
- Bassem Chahine**
Lawrence
- Ken Easthouse**
Lawrence
- Matthew Herbert**
Lawrence
- Lisa Larsen**
Lawrence
- Christian Lyche**
Lawrence
- Dustin Stumblingbear**
Lawrence
- Jennifer Ananda**
Lawrence

Thank you for voting.

Please take time to review your ballot before casting it; you may request a replacement ballot if necessary.

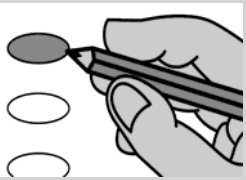
A	Precinct 10	B		C	
---	-------------	---	--	---	--

Official Primary Election Ballot

A	State of Kansas	B	Douglas County	C	August 1, 2017
---	-----------------	---	----------------	---	----------------

! Notice: If you tear, deface, or make a mistake and wrongfully mark any ballot, you must return it to the election board and receive a new ballot.

Making selections



Use black or blue ball point pen to darken oval completely.
To vote for a person, darken the oval to the left of the person's name.
Follow instructions on number of votes allowed for each race.

MUNICIPAL OFFICES

Lawrence City Commission
Vote for THREE(3) or FEWER

- Bassem Chahine**
Lawrence
- Ken Easthouse**
Lawrence
- Matthew Herbert**
Lawrence
- Lisa Larsen**
Lawrence
- Christian Lyche**
Lawrence
- Dustin Stumblingbear**
Lawrence
- Jennifer Ananda**
Lawrence
- Mike Anderson**
Lawrence

Thank you for voting.
Please take time to review your ballot before casting it; you may request a replacement ballot if necessary.

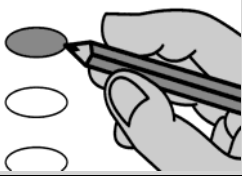
A	Precinct 11	B		C	
---	-------------	---	--	---	--

Official Primary Election Ballot

A	State of Kansas	B	Douglas County	C	August 1, 2017
---	-----------------	---	----------------	---	----------------

! Notice: If you tear, deface, or make a mistake and wrongfully mark any ballot, you must return it to the election board and receive a new ballot.

Making selections



Use black or blue ball point pen to darken oval completely.
To vote for a person, darken the oval to the left of the person's name.
Follow instructions on number of votes allowed for each race.

MUNICIPAL OFFICES

Lawrence City Commission
Vote for THREE(3) or FEWER

- Lisa Larsen** Lawrence
- Christian Lyche** Lawrence
- Dustin Stumblingbear** Lawrence
- Jennifer Ananda** Lawrence
- Mike Anderson** Lawrence
- Bassem Chahine** Lawrence
- Ken Easthouse** Lawrence
- Matthew Herbert** Lawrence

Thank you for voting.

Please take time to review your ballot before casting it; you may request a replacement ballot if necessary.

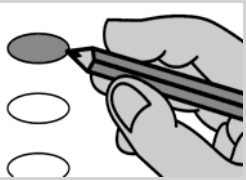
A	Precinct 12	B		C	
---	-------------	---	--	---	--

Official Primary Election Ballot

A	State of Kansas	B	Douglas County	C	August 1, 2017
---	-----------------	---	----------------	---	----------------

! Notice: If you tear, deface, or make a mistake and wrongfully mark any ballot, you must return it to the election board and receive a new ballot.

Making selections



Use black or blue ball point pen to darken oval completely.
To vote for a person, darken the oval to the left of the person's name.
Follow instructions on number of votes allowed for each race.

MUNICIPAL OFFICES

Lawrence City Commission
Vote for THREE(3) or FEWER

- Matthew Herbert**
Lawrence
- Lisa Larsen**
Lawrence
- Christian Lyche**
Lawrence
- Dustin Stumblingbear**
Lawrence
- Jennifer Ananda**
Lawrence
- Mike Anderson**
Lawrence
- Bassem Chahine**
Lawrence
- Ken Easthouse**
Lawrence

Thank you for voting.

Please take time to review your ballot before casting it; you may request a replacement ballot if necessary.

A	Precinct 13	B		C	
---	-------------	---	--	---	--

Official Primary Election Ballot

1/1

A	State of Kansas	B	Douglas County	C	August 1, 2017
---	-----------------	---	----------------	---	----------------



Notice: If you tear, deface, or make a mistake and wrongfully mark any ballot, you must return it to the election board and receive a new ballot.

Making selections



Use black or blue ball point pen to darken oval completely.

To vote for a person, darken the oval to the left of the person's name.

Follow instructions on number of votes allowed for each race.

MUNICIPAL OFFICES

Lawrence City Commission
Vote for THREE(3) or FEWER

- Lisa Larsen**
Lawrence
- Christian Lyche**
Lawrence
- Dustin Stumblingbear**
Lawrence
- Jennifer Ananda**
Lawrence
- Mike Anderson**
Lawrence
- Bassem Chahine**
Lawrence
- Ken Easthouse**
Lawrence
- Matthew Herbert**
Lawrence

Thank you for voting.

Please take time to review your ballot before casting it; you may request a replacement ballot if necessary.

A	Precinct 14	B		C	
---	-------------	---	--	---	--

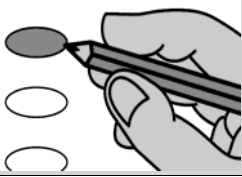
Official Primary Election Ballot

1/1

A State of Kansas B Douglas County C August 1, 2017

! Notice: If you tear, deface, or make a mistake and wrongfully mark any ballot, you must return it to the election board and receive a new ballot.

Making selections



Use black or blue ball point pen to darken oval completely.

To vote for a person, darken the oval to the left of the person's name.

Follow instructions on number of votes allowed for each race.

MUNICIPAL OFFICES

Lawrence City Commission
Vote for THREE(3) or FEWER

- Christian Lyche**
Lawrence
- Dustin Stumblingbear**
Lawrence
- Jennifer Ananda**
Lawrence
- Mike Anderson**
Lawrence
- Bassem Chahine**
Lawrence
- Ken Easthouse**
Lawrence
- Matthew Herbert**
Lawrence
- Lisa Larsen**
Lawrence

Thank you for voting.

Please take time to review your ballot before casting it; you may request a replacement ballot if necessary.

A Precinct 15 B C

Official Primary Election Ballot

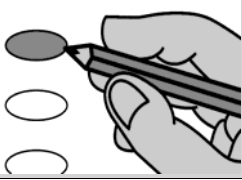
1/1

A	State of Kansas	B	Douglas County	C	August 1, 2017
---	-----------------	---	----------------	---	----------------



Notice: If you tear, deface, or make a mistake and wrongfully mark any ballot, you must return it to the election board and receive a new ballot.

Making selections



Use black or blue ball point pen to darken oval completely.

To vote for a person, darken the oval to the left of the person's name.

Follow instructions on number of votes allowed for each race.

MUNICIPAL OFFICES

Lawrence City Commission
Vote for THREE(3) or FEWER

- Dustin Stumblingbear**
Lawrence
- Jennifer Ananda**
Lawrence
- Mike Anderson**
Lawrence
- Bassem Chahine**
Lawrence
- Ken Easthouse**
Lawrence
- Matthew Herbert**
Lawrence
- Lisa Larsen**
Lawrence
- Christian Lyche**
Lawrence

Thank you for voting.

Please take time to review your ballot before casting it; you may request a replacement ballot if necessary.

A	Precinct 16	B		C	
---	-------------	---	--	---	--

Official Primary Election Ballot

1/1

A	State of Kansas	B	Douglas County	C	August 1, 2017
---	-----------------	---	----------------	---	----------------



Notice: If you tear, deface, or make a mistake and wrongfully mark any ballot, you must return it to the election board and receive a new ballot.

Making selections



Use black or blue ball point pen to darken oval completely.

To vote for a person, darken the oval to the left of the person's name.

Follow instructions on number of votes allowed for each race.

MUNICIPAL OFFICES

Lawrence City Commission
Vote for THREE(3) or FEWER

- Jennifer Ananda**
Lawrence
- Mike Anderson**
Lawrence
- Bassem Chahine**
Lawrence
- Ken Easthouse**
Lawrence
- Matthew Herbert**
Lawrence
- Lisa Larsen**
Lawrence
- Christian Lyche**
Lawrence
- Dustin Stumblingbear**
Lawrence

Thank you for voting.

Please take time to review your ballot before casting it; you may request a replacement ballot if necessary.

A	Precinct 17	B		C	
---	-------------	---	--	---	--

Official Primary Election Ballot

1/1

A State of Kansas B Douglas County C August 1, 2017



Notice: If you tear, deface, or make a mistake and wrongfully mark any ballot, you must return it to the election board and receive a new ballot.

Making selections



Use black or blue ball point pen to darken oval completely.

To vote for a person, darken the oval to the left of the person's name.

Follow instructions on number of votes allowed for each race.

MUNICIPAL OFFICES

Lawrence City Commission
Vote for THREE(3) or FEWER

- Mike Anderson**
Lawrence
- Bassem Chahine**
Lawrence
- Ken Easthouse**
Lawrence
- Matthew Herbert**
Lawrence
- Lisa Larsen**
Lawrence
- Christian Lyche**
Lawrence
- Dustin Stumblingbear**
Lawrence
- Jennifer Ananda**
Lawrence

Thank you for voting.

Please take time to review your ballot before casting it; you may request a replacement ballot if necessary.

A Precinct 18 B C

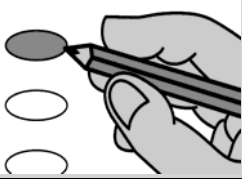
Official Primary Election Ballot

A	State of Kansas	B	Douglas County	C	August 1, 2017
---	-----------------	---	----------------	---	----------------



Notice: If you tear, deface, or make a mistake and wrongfully mark any ballot, you must return it to the election board and receive a new ballot.

Making selections



Use black or blue ball point pen to darken oval completely.

To vote for a person, darken the oval to the left of the person's name.

Follow instructions on number of votes allowed for each race.

MUNICIPAL OFFICES

Lawrence City Commission
Vote for THREE(3) or FEWER

- Bassem Chahine**
Lawrence
- Ken Easthouse**
Lawrence
- Matthew Herbert**
Lawrence
- Lisa Larsen**
Lawrence
- Christian Lyche**
Lawrence
- Dustin Stumblingbear**
Lawrence
- Jennifer Ananda**
Lawrence
- Mike Anderson**
Lawrence

Thank you for voting.

Please take time to review your ballot before casting it; you may request a replacement ballot if necessary.

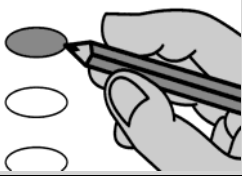
A	Precinct 19	B		C	
---	-------------	---	--	---	--

Official Primary Election Ballot

A	State of Kansas	B	Douglas County	C	August 1, 2017
---	-----------------	---	----------------	---	----------------

! Notice: If you tear, deface, or make a mistake and wrongfully mark any ballot, you must return it to the election board and receive a new ballot.

Making selections



Use black or blue ball point pen to darken oval completely.

To vote for a person, darken the oval to the left of the person's name.

Follow instructions on number of votes allowed for each race.

MUNICIPAL OFFICES

Lawrence City Commission
Vote for THREE(3) or FEWER

- Ken Easthouse**
Lawrence
- Matthew Herbert**
Lawrence
- Lisa Larsen**
Lawrence
- Christian Lyche**
Lawrence
- Dustin Stumblingbear**
Lawrence
- Jennifer Ananda**
Lawrence
- Mike Anderson**
Lawrence
- Bassem Chahine**
Lawrence

Thank you for voting.

Please take time to review your ballot before casting it; you may request a replacement ballot if necessary.

A	Precinct 20	B		C	
---	-------------	---	--	---	--

Official Primary Election Ballot

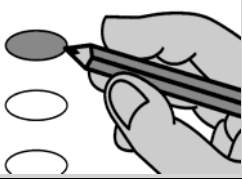
1/1

A	State of Kansas	B	Douglas County	C	August 1, 2017
---	-----------------	---	----------------	---	----------------



Notice: If you tear, deface, or make a mistake and wrongfully mark any ballot, you must return it to the election board and receive a new ballot.

Making selections



Use black or blue ball point pen to darken oval completely.

To vote for a person, darken the oval to the left of the person's name.

Follow instructions on number of votes allowed for each race.

MUNICIPAL OFFICES

Lawrence City Commission
Vote for THREE(3) or FEWER

- Ken Easthouse**
Lawrence
- Matthew Herbert**
Lawrence
- Lisa Larsen**
Lawrence
- Christian Lyche**
Lawrence
- Dustin Stumblingbear**
Lawrence
- Jennifer Ananda**
Lawrence
- Mike Anderson**
Lawrence
- Bassem Chahine**
Lawrence

Thank you for voting.

Please take time to review your ballot before casting it; you may request a replacement ballot if necessary.

A	Precinct 21	B		C	
---	-------------	---	--	---	--

Official Primary Election Ballot

1/1

A	State of Kansas	B	Douglas County	C	August 1, 2017
---	-----------------	---	----------------	---	----------------

! Notice: If you tear, deface, or make a mistake and wrongfully mark any ballot, you must return it to the election board and receive a new ballot.

Making selections



Use black or blue ball point pen to darken oval completely.

To vote for a person, darken the oval to the left of the person's name.

Follow instructions on number of votes allowed for each race.

MUNICIPAL OFFICES

Lawrence City Commission
Vote for THREE(3) or FEWER

- Lisa Larsen** Lawrence
- Christian Lyche** Lawrence
- Dustin Stumblingbear** Lawrence
- Jennifer Ananda** Lawrence
- Mike Anderson** Lawrence
- Bassem Chahine** Lawrence
- Ken Easthouse** Lawrence
- Matthew Herbert** Lawrence

Thank you for voting.

Please take time to review your ballot before casting it; you may request a replacement ballot if necessary.

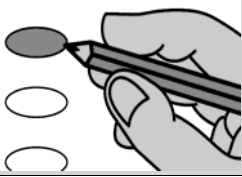
A	Precinct 22	B		C	
---	-------------	---	--	---	--

Official Primary Election Ballot

A	State of Kansas	B	Douglas County	C	August 1, 2017
---	-----------------	---	----------------	---	----------------

! Notice: If you tear, deface, or make a mistake and wrongfully mark any ballot, you must return it to the election board and receive a new ballot.

Making selections



Use black or blue ball point pen to darken oval completely.
To vote for a person, darken the oval to the left of the person's name.
Follow instructions on number of votes allowed for each race.

MUNICIPAL OFFICES

Lawrence City Commission
Vote for THREE(3) or FEWER

- Ken Easthouse**
Lawrence
- Matthew Herbert**
Lawrence
- Lisa Larsen**
Lawrence
- Christian Lyche**
Lawrence
- Dustin Stumblingbear**
Lawrence
- Jennifer Ananda**
Lawrence
- Mike Anderson**
Lawrence
- Bassem Chahine**
Lawrence

Thank you for voting.

Please take time to review your ballot before casting it; you may request a replacement ballot if necessary.

A	Precinct 23	B		C	
---	-------------	---	--	---	--

Official Primary Election Ballot

A	State of Kansas	B	Douglas County	C	August 1, 2017
---	-----------------	---	----------------	---	----------------

! Notice: If you tear, deface, or make a mistake and wrongfully mark any ballot, you must return it to the election board and receive a new ballot.

Making selections
Use black or blue ball point pen to darken oval completely.
To vote for a person, darken the oval to the left of the person's name.
Follow instructions on number of votes allowed for each race.

MUNICIPAL OFFICES

Lawrence City Commission
Vote for THREE(3) or FEWER

- Dustin Stumblingbear**
Lawrence
- Jennifer Ananda**
Lawrence
- Mike Anderson**
Lawrence
- Bassem Chahine**
Lawrence
- Ken Easthouse**
Lawrence
- Matthew Herbert**
Lawrence
- Lisa Larsen**
Lawrence
- Christian Lyche**
Lawrence

Thank you for voting.
Please take time to review your ballot before casting it; you may request a replacement ballot if necessary.

A	Precinct 24	B		C	
---	-------------	---	--	---	--

Official Primary Election Ballot

A	State of Kansas	B	Douglas County	C	August 1, 2017
---	-----------------	---	----------------	---	----------------

! Notice: If you tear, deface, or make a mistake and wrongfully mark any ballot, you must return it to the election board and receive a new ballot.

Making selections



Use black or blue ball point pen to darken oval completely.

To vote for a person, darken the oval to the left of the person's name.

Follow instructions on number of votes allowed for each race.

MUNICIPAL OFFICES

Lawrence City Commission
Vote for THREE(3) or FEWER

- Jennifer Ananda**
Lawrence
- Mike Anderson**
Lawrence
- Bassem Chahine**
Lawrence
- Ken Easthouse**
Lawrence
- Matthew Herbert**
Lawrence
- Lisa Larsen**
Lawrence
- Christian Lyche**
Lawrence
- Dustin Stumblingbear**
Lawrence

Thank you for voting.

Please take time to review your ballot before casting it; you may request a replacement ballot if necessary.

A	Precinct 25	B		C	
---	-------------	---	--	---	--

Official Primary Election Ballot

1/1

A State of Kansas B Douglas County C August 1, 2017



Notice: If you tear, deface, or make a mistake and wrongfully mark any ballot, you must return it to the election board and receive a new ballot.

Making selections



Use black or blue ball point pen to darken oval completely.

To vote for a person, darken the oval to the left of the person's name.

Follow instructions on number of votes allowed for each race.

MUNICIPAL OFFICES

Lawrence City Commission
Vote for THREE(3) or FEWER

- Mike Anderson**
Lawrence
- Bassem Chahine**
Lawrence
- Ken Easthouse**
Lawrence
- Matthew Herbert**
Lawrence
- Lisa Larsen**
Lawrence
- Christian Lyche**
Lawrence
- Dustin Stumblingbear**
Lawrence
- Jennifer Ananda**
Lawrence

Thank you for voting.

Please take time to review your ballot before casting it; you may request a replacement ballot if necessary.

A Precinct 26 B C

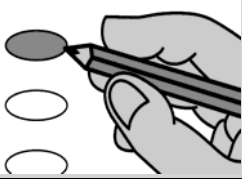
Official Primary Election Ballot

A	State of Kansas	B	Douglas County	C	August 1, 2017
---	-----------------	---	----------------	---	----------------



Notice: If you tear, deface, or make a mistake and wrongfully mark any ballot, you must return it to the election board and receive a new ballot.

Making selections



Use black or blue ball point pen to darken oval completely.

To vote for a person, darken the oval to the left of the person's name.

Follow instructions on number of votes allowed for each race.

MUNICIPAL OFFICES

Lawrence City Commission
Vote for THREE(3) or FEWER

- Bassem Chahine**
Lawrence
- Ken Easthouse**
Lawrence
- Matthew Herbert**
Lawrence
- Lisa Larsen**
Lawrence
- Christian Lyche**
Lawrence
- Dustin Stumblingbear**
Lawrence
- Jennifer Ananda**
Lawrence
- Mike Anderson**
Lawrence

Thank you for voting.

Please take time to review your ballot before casting it; you may request a replacement ballot if necessary.

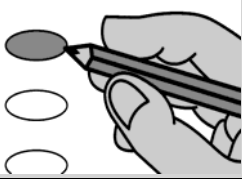
A	Precinct 27	B		C	
---	-------------	---	--	---	--

Official Primary Election Ballot

A	State of Kansas	B	Douglas County	C	August 1, 2017
---	-----------------	---	----------------	---	----------------

! Notice: If you tear, deface, or make a mistake and wrongfully mark any ballot, you must return it to the election board and receive a new ballot.

Making selections



Use black or blue ball point pen to darken oval completely.
To vote for a person, darken the oval to the left of the person's name.
Follow instructions on number of votes allowed for each race.

MUNICIPAL OFFICES

Lawrence City Commission
Vote for THREE(3) or FEWER

- Jennifer Ananda**
Lawrence
- Mike Anderson**
Lawrence
- Bassem Chahine**
Lawrence
- Ken Easthouse**
Lawrence
- Matthew Herbert**
Lawrence
- Lisa Larsen**
Lawrence
- Christian Lyche**
Lawrence
- Dustin Stumblingbear**
Lawrence

Thank you for voting.

Please take time to review your ballot before casting it; you may request a replacement ballot if necessary.

A	Precinct 28	B		C	
---	-------------	---	--	---	--

Official Primary Election Ballot

1/1

A State of Kansas B Douglas County C August 1, 2017



Notice: If you tear, deface, or make a mistake and wrongfully mark any ballot, you must return it to the election board and receive a new ballot.

Making selections



Use black or blue ball point pen to darken oval completely.

To vote for a person, darken the oval to the left of the person's name.

Follow instructions on number of votes allowed for each race.

MUNICIPAL OFFICES

Lawrence City Commission
Vote for THREE(3) or FEWER

- Matthew Herbert**
Lawrence
- Lisa Larsen**
Lawrence
- Christian Lyche**
Lawrence
- Dustin Stumblingbear**
Lawrence
- Jennifer Ananda**
Lawrence
- Mike Anderson**
Lawrence
- Bassem Chahine**
Lawrence
- Ken Easthouse**
Lawrence

Thank you for voting.

Please take time to review your ballot before casting it; you may request a replacement ballot if necessary.

A Precinct 29 B C

Official Primary Election Ballot

A	State of Kansas	B	Douglas County	C	August 1, 2017
---	-----------------	---	----------------	---	----------------



Notice: If you tear, deface, or make a mistake and wrongfully mark any ballot, you must return it to the election board and receive a new ballot.

Making selections



Use black or blue ball point pen to darken oval completely.

To vote for a person, darken the oval to the left of the person's name.

Follow instructions on number of votes allowed for each race.

MUNICIPAL OFFICES

Lawrence City Commission
Vote for THREE(3) or FEWER

- Bassem Chahine**
Lawrence
- Ken Easthouse**
Lawrence
- Matthew Herbert**
Lawrence
- Lisa Larsen**
Lawrence
- Christian Lyche**
Lawrence
- Dustin Stumblingbear**
Lawrence
- Jennifer Ananda**
Lawrence
- Mike Anderson**
Lawrence

Thank you for voting.

Please take time to review your ballot before casting it; you may request a replacement ballot if necessary.

A	Precinct 30 S2	B	30.1	C	
---	----------------	---	------	---	--

Official Primary Election Ballot

1/1

A	State of Kansas	B	Douglas County	C	August 1, 2017
---	-----------------	---	----------------	---	----------------



Notice: If you tear, deface, or make a mistake and wrongfully mark any ballot, you must return it to the election board and receive a new ballot.

Making selections



Use black or blue ball point pen to darken oval completely.

To vote for a person, darken the oval to the left of the person's name.

Follow instructions on number of votes allowed for each race.

MUNICIPAL OFFICES

Lawrence City Commission
Vote for THREE(3) or FEWER

- Christian Lyche**
Lawrence
- Dustin Stumblingbear**
Lawrence
- Jennifer Ananda**
Lawrence
- Mike Anderson**
Lawrence
- Bassem Chahine**
Lawrence
- Ken Easthouse**
Lawrence
- Matthew Herbert**
Lawrence
- Lisa Larsen**
Lawrence

Thank you for voting.

Please take time to review your ballot before casting it; you may request a replacement ballot if necessary.

A	Precinct 30 S3	B	30.2	C	
---	----------------	---	------	---	--

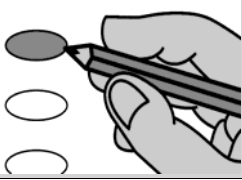
Official Primary Election Ballot

A	State of Kansas	B	Douglas County	C	August 1, 2017
---	-----------------	---	----------------	---	----------------



Notice: If you tear, deface, or make a mistake and wrongfully mark any ballot, you must return it to the election board and receive a new ballot.

Making selections



Use black or blue ball point pen to darken oval completely.

To vote for a person, darken the oval to the left of the person's name.

Follow instructions on number of votes allowed for each race.

MUNICIPAL OFFICES

Lawrence City Commission
Vote for THREE(3) or FEWER

- Dustin Stumblingbear**
Lawrence
- Jennifer Ananda**
Lawrence
- Mike Anderson**
Lawrence
- Bassem Chahine**
Lawrence
- Ken Easthouse**
Lawrence
- Matthew Herbert**
Lawrence
- Lisa Larsen**
Lawrence
- Christian Lyche**
Lawrence

Thank you for voting.

Please take time to review your ballot before casting it; you may request a replacement ballot if necessary.

A	Precinct 31	B		C	
---	-------------	---	--	---	--

Official Primary Election Ballot

A	State of Kansas	B	Douglas County	C	August 1, 2017
---	-----------------	---	----------------	---	----------------

! Notice: If you tear, deface, or make a mistake and wrongfully mark any ballot, you must return it to the election board and receive a new ballot.

Making selections



Use black or blue ball point pen to darken oval completely.

To vote for a person, darken the oval to the left of the person's name.

Follow instructions on number of votes allowed for each race.

MUNICIPAL OFFICES

Lawrence City Commission
Vote for THREE(3) or FEWER

- Jennifer Ananda**
Lawrence
- Mike Anderson**
Lawrence
- Bassem Chahine**
Lawrence
- Ken Easthouse**
Lawrence
- Matthew Herbert**
Lawrence
- Lisa Larsen**
Lawrence
- Christian Lyche**
Lawrence
- Dustin Stumblingbear**
Lawrence

Thank you for voting.

Please take time to review your ballot before casting it; you may request a replacement ballot if necessary.

A	Precinct 32	B		C	
---	-------------	---	--	---	--

Official Primary Election Ballot

1/1

A State of Kansas B Douglas County C August 1, 2017



Notice: If you tear, deface, or make a mistake and wrongfully mark any ballot, you must return it to the election board and receive a new ballot.

Making selections



Use black or blue ball point pen to darken oval completely.

To vote for a person, darken the oval to the left of the person's name.

Follow instructions on number of votes allowed for each race.

MUNICIPAL OFFICES

Lawrence City Commission
Vote for THREE(3) or FEWER

- Mike Anderson**
Lawrence
- Bassem Chahine**
Lawrence
- Ken Easthouse**
Lawrence
- Matthew Herbert**
Lawrence
- Lisa Larsen**
Lawrence
- Christian Lyche**
Lawrence
- Dustin Stumblingbear**
Lawrence
- Jennifer Ananda**
Lawrence

Thank you for voting.

Please take time to review your ballot before casting it; you may request a replacement ballot if necessary.

A Precinct 33 B C

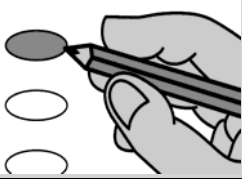
Official Primary Election Ballot

A	State of Kansas	B	Douglas County	C	August 1, 2017
---	-----------------	---	----------------	---	----------------



Notice: If you tear, deface, or make a mistake and wrongfully mark any ballot, you must return it to the election board and receive a new ballot.

Making selections



Use black or blue ball point pen to darken oval completely.

To vote for a person, darken the oval to the left of the person's name.

Follow instructions on number of votes allowed for each race.

MUNICIPAL OFFICES

Lawrence City Commission
Vote for THREE(3) or FEWER

- Christian Lyche**
Lawrence
- Dustin Stumblingbear**
Lawrence
- Jennifer Ananda**
Lawrence
- Mike Anderson**
Lawrence
- Bassem Chahine**
Lawrence
- Ken Easthouse**
Lawrence
- Matthew Herbert**
Lawrence
- Lisa Larsen**
Lawrence

Thank you for voting.

Please take time to review your ballot before casting it; you may request a replacement ballot if necessary.

A	Precinct 34 S2	B	34.1	C	
---	----------------	---	------	---	--

Official Primary Election Ballot

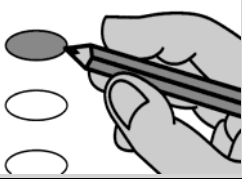
1/1

A	State of Kansas	B	Douglas County	C	August 1, 2017
---	-----------------	---	----------------	---	----------------



Notice: If you tear, deface, or make a mistake and wrongfully mark any ballot, you must return it to the election board and receive a new ballot.

Making selections



Use black or blue ball point pen to darken oval completely.

To vote for a person, darken the oval to the left of the person's name.

Follow instructions on number of votes allowed for each race.

MUNICIPAL OFFICES

Lawrence City Commission
Vote for THREE(3) or FEWER

- Ken Easthouse**
Lawrence
- Matthew Herbert**
Lawrence
- Lisa Larsen**
Lawrence
- Christian Lyche**
Lawrence
- Dustin Stumblingbear**
Lawrence
- Jennifer Ananda**
Lawrence
- Mike Anderson**
Lawrence
- Bassem Chahine**
Lawrence

Thank you for voting.

Please take time to review your ballot before casting it; you may request a replacement ballot if necessary.

A	Precinct 34 S3	B	34.2	C	
---	----------------	---	------	---	--

Official Primary Election Ballot

1/1

A	State of Kansas	B	Douglas County	C	August 1, 2017
---	-----------------	---	----------------	---	----------------



Notice: If you tear, deface, or make a mistake and wrongfully mark any ballot, you must return it to the election board and receive a new ballot.

Making selections



Use black or blue ball point pen to darken oval completely.

To vote for a person, darken the oval to the left of the person's name.

Follow instructions on number of votes allowed for each race.

MUNICIPAL OFFICES

Lawrence City Commission
Vote for THREE(3) or FEWER

- Matthew Herbert**
Lawrence
- Lisa Larsen**
Lawrence
- Christian Lyche**
Lawrence
- Dustin Stumblingbear**
Lawrence
- Jennifer Ananda**
Lawrence
- Mike Anderson**
Lawrence
- Bassem Chahine**
Lawrence
- Ken Easthouse**
Lawrence

Thank you for voting.

Please take time to review your ballot before casting it; you may request a replacement ballot if necessary.

A	Precinct 35 S2	B	35.1	C	
---	----------------	---	------	---	--

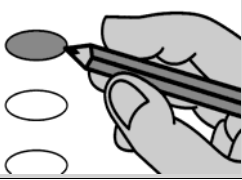
Official Primary Election Ballot

A	State of Kansas	B	Douglas County	C	August 1, 2017
---	-----------------	---	----------------	---	----------------



Notice: If you tear, deface, or make a mistake and wrongfully mark any ballot, you must return it to the election board and receive a new ballot.

Making selections



Use black or blue ball point pen to darken oval completely.

To vote for a person, darken the oval to the left of the person's name.

Follow instructions on number of votes allowed for each race.

MUNICIPAL OFFICES

Lawrence City Commission
Vote for THREE(3) or FEWER

- Dustin Stumblingbear**
Lawrence
- Jennifer Ananda**
Lawrence
- Mike Anderson**
Lawrence
- Bassem Chahine**
Lawrence
- Ken Easthouse**
Lawrence
- Matthew Herbert**
Lawrence
- Lisa Larsen**
Lawrence
- Christian Lyche**
Lawrence

Thank you for voting.

Please take time to review your ballot before casting it; you may request a replacement ballot if necessary.

A	Precinct 35 S3	B	35.2	C	
---	----------------	---	------	---	--

Official Primary Election Ballot

1/1

A	State of Kansas	B	Douglas County	C	August 1, 2017
---	-----------------	---	----------------	---	----------------



Notice: If you tear, deface, or make a mistake and wrongfully mark any ballot, you must return it to the election board and receive a new ballot.

Making selections



Use black or blue ball point pen to darken oval completely.

To vote for a person, darken the oval to the left of the person's name.

Follow instructions on number of votes allowed for each race.

MUNICIPAL OFFICES

Lawrence City Commission
Vote for THREE(3) or FEWER

- Christian Lyche**
Lawrence
- Dustin Stumblingbear**
Lawrence
- Jennifer Ananda**
Lawrence
- Mike Anderson**
Lawrence
- Bassem Chahine**
Lawrence
- Ken Easthouse**
Lawrence
- Matthew Herbert**
Lawrence
- Lisa Larsen**
Lawrence

Thank you for voting.

Please take time to review your ballot before casting it; you may request a replacement ballot if necessary.

A	Precinct 36 S2	B	36.1	C	
---	----------------	---	------	---	--

Official Primary Election Ballot

1/1

A	State of Kansas	B	Douglas County	C	August 1, 2017
---	-----------------	---	----------------	---	----------------



Notice: If you tear, deface, or make a mistake and wrongfully mark any ballot, you must return it to the election board and receive a new ballot.

Making selections



Use black or blue ball point pen to darken oval completely.

To vote for a person, darken the oval to the left of the person's name.

Follow instructions on number of votes allowed for each race.

MUNICIPAL OFFICES

Lawrence City Commission
Vote for THREE(3) or FEWER

- Dustin Stumblingbear**
Lawrence
- Jennifer Ananda**
Lawrence
- Mike Anderson**
Lawrence
- Bassem Chahine**
Lawrence
- Ken Easthouse**
Lawrence
- Matthew Herbert**
Lawrence
- Lisa Larsen**
Lawrence
- Christian Lyche**
Lawrence

Thank you for voting.

Please take time to review your ballot before casting it; you may request a replacement ballot if necessary.

A	Precinct 37 H10	B	37.1	C	
---	-----------------	---	------	---	--

Official Primary Election Ballot

A	State of Kansas	B	Douglas County	C	August 1, 2017
---	-----------------	---	----------------	---	----------------



Notice: If you tear, deface, or make a mistake and wrongfully mark any ballot, you must return it to the election board and receive a new ballot.

Making selections



Use black or blue ball point pen to darken oval completely.

To vote for a person, darken the oval to the left of the person's name.

Follow instructions on number of votes allowed for each race.

MUNICIPAL OFFICES

Lawrence City Commission
Vote for THREE(3) or FEWER

- Dustin Stumblingbear**
Lawrence
- Jennifer Ananda**
Lawrence
- Mike Anderson**
Lawrence
- Bassem Chahine**
Lawrence
- Ken Easthouse**
Lawrence
- Matthew Herbert**
Lawrence
- Lisa Larsen**
Lawrence
- Christian Lyche**
Lawrence

Thank you for voting.

Please take time to review your ballot before casting it; you may request a replacement ballot if necessary.

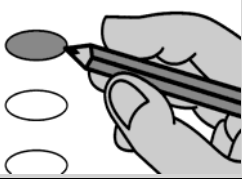
A	Precinct 38 H10	B	38.1	C	
---	-----------------	---	------	---	--

Official Primary Election Ballot

A	State of Kansas	B	Douglas County	C	August 1, 2017
---	-----------------	---	----------------	---	----------------

! Notice: If you tear, deface, or make a mistake and wrongfully mark any ballot, you must return it to the election board and receive a new ballot.

Making selections



Use black or blue ball point pen to darken oval completely.

To vote for a person, darken the oval to the left of the person's name.

Follow instructions on number of votes allowed for each race.

MUNICIPAL OFFICES

Lawrence City Commission
Vote for THREE(3) or FEWER

- Matthew Herbert**
Lawrence
- Lisa Larsen**
Lawrence
- Christian Lyche**
Lawrence
- Dustin Stumblingbear**
Lawrence
- Jennifer Ananda**
Lawrence
- Mike Anderson**
Lawrence
- Bassem Chahine**
Lawrence
- Ken Easthouse**
Lawrence

Thank you for voting.

Please take time to review your ballot before casting it; you may request a replacement ballot if necessary.

A	Precinct 39	B		C	
---	-------------	---	--	---	--

Official Primary Election Ballot

A	State of Kansas	B	Douglas County	C	August 1, 2017
---	-----------------	---	----------------	---	----------------

! Notice: If you tear, deface, or make a mistake and wrongfully mark any ballot, you must return it to the election board and receive a new ballot.

Making selections



Use black or blue ball point pen to darken oval completely.

To vote for a person, darken the oval to the left of the person's name.

Follow instructions on number of votes allowed for each race.

MUNICIPAL OFFICES

Lawrence City Commission
Vote for THREE(3) or FEWER

- Bassem Chahine**
Lawrence
- Ken Easthouse**
Lawrence
- Matthew Herbert**
Lawrence
- Lisa Larsen**
Lawrence
- Christian Lyche**
Lawrence
- Dustin Stumblingbear**
Lawrence
- Jennifer Ananda**
Lawrence
- Mike Anderson**
Lawrence

Thank you for voting.

Please take time to review your ballot before casting it; you may request a replacement ballot if necessary.

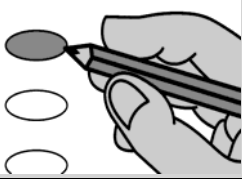
A	Precinct 40	B		C	
---	-------------	---	--	---	--

Official Primary Election Ballot

A	State of Kansas	B	Douglas County	C	August 1, 2017
---	-----------------	---	----------------	---	----------------

! Notice: If you tear, deface, or make a mistake and wrongfully mark any ballot, you must return it to the election board and receive a new ballot.

Making selections



Use black or blue ball point pen to darken oval completely.
 To vote for a person, darken the oval to the left of the person's name.
 Follow instructions on number of votes allowed for each race.

MUNICIPAL OFFICES

Lawrence City Commission
 Vote for THREE(3) or FEWER

- Ken Easthouse**
Lawrence
- Matthew Herbert**
Lawrence
- Lisa Larsen**
Lawrence
- Christian Lyche**
Lawrence
- Dustin Stumblingbear**
Lawrence
- Jennifer Ananda**
Lawrence
- Mike Anderson**
Lawrence
- Bassem Chahine**
Lawrence

Thank you for voting.

Please take time to review your ballot before casting it; you may request a replacement ballot if necessary.

A	Precinct 41 S3 H46	B	41.1	C	
---	--------------------	---	------	---	--

Official Primary Election Ballot

A	State of Kansas	B	Douglas County	C	August 1, 2017
---	-----------------	---	----------------	---	----------------

! Notice: If you tear, deface, or make a mistake and wrongfully mark any ballot, you must return it to the election board and receive a new ballot.

Making selections
Use black or blue ball point pen to darken oval completely.
To vote for a person, darken the oval to the left of the person's name.
Follow instructions on number of votes allowed for each race.

MUNICIPAL OFFICES

Lawrence City Commission
Vote for THREE(3) or FEWER

- Bassem Chahine**
Lawrence
- Ken Easthouse**
Lawrence
- Matthew Herbert**
Lawrence
- Lisa Larsen**
Lawrence
- Christian Lyche**
Lawrence
- Dustin Stumblingbear**
Lawrence
- Jennifer Ananda**
Lawrence
- Mike Anderson**
Lawrence

Thank you for voting.
Please take time to review your ballot before casting it; you may request a replacement ballot if necessary.

A	Precinct 41 S3 H45	B	41.2	C	
---	--------------------	---	------	---	--

Official Primary Election Ballot

1/1

A	State of Kansas	B	Douglas County	C	August 1, 2017
---	-----------------	---	----------------	---	----------------



Notice: If you tear, deface, or make a mistake and wrongfully mark any ballot, you must return it to the election board and receive a new ballot.

Making selections



Use black or blue ball point pen to darken oval completely.

To vote for a person, darken the oval to the left of the person's name.

Follow instructions on number of votes allowed for each race.

MUNICIPAL OFFICES

Lawrence City Commission
Vote for THREE(3) or FEWER

- Dustin Stumblingbear**
Lawrence
- Jennifer Ananda**
Lawrence
- Mike Anderson**
Lawrence
- Bassem Chahine**
Lawrence
- Ken Easthouse**
Lawrence
- Matthew Herbert**
Lawrence
- Lisa Larsen**
Lawrence
- Christian Lyche**
Lawrence

Thank you for voting.

Please take time to review your ballot before casting it; you may request a replacement ballot if necessary.

A	Precinct 41 S2 H46	B	41.3	C	
---	--------------------	---	------	---	--

Official Primary Election Ballot

A	State of Kansas	B	Douglas County	C	August 1, 2017
---	-----------------	---	----------------	---	----------------



Notice: If you tear, deface, or make a mistake and wrongfully mark any ballot, you must return it to the election board and receive a new ballot.

Making selections



Use black or blue ball point pen to darken oval completely.

To vote for a person, darken the oval to the left of the person's name.

Follow instructions on number of votes allowed for each race.

MUNICIPAL OFFICES

Lawrence City Commission
Vote for THREE(3) or FEWER

- Christian Lyche**
Lawrence
- Dustin Stumblingbear**
Lawrence
- Jennifer Ananda**
Lawrence
- Mike Anderson**
Lawrence
- Bassem Chahine**
Lawrence
- Ken Easthouse**
Lawrence
- Matthew Herbert**
Lawrence
- Lisa Larsen**
Lawrence

Thank you for voting.

Please take time to review your ballot before casting it; you may request a replacement ballot if necessary.

A	Precinct 41 S2 H45	B	41.4	C	
---	--------------------	---	------	---	--

Official Primary Election Ballot

A	State of Kansas	B	Douglas County	C	August 1, 2017
---	-----------------	---	----------------	---	----------------



Notice: If you tear, deface, or make a mistake and wrongfully mark any ballot, you must return it to the election board and receive a new ballot.

Making selections



Use black or blue ball point pen to darken oval completely.

To vote for a person, darken the oval to the left of the person's name.

Follow instructions on number of votes allowed for each race.

MUNICIPAL OFFICES

Lawrence City Commission
Vote for THREE(3) or FEWER

- Dustin Stumblingbear**
Lawrence
- Jennifer Ananda**
Lawrence
- Mike Anderson**
Lawrence
- Bassem Chahine**
Lawrence
- Ken Easthouse**
Lawrence
- Matthew Herbert**
Lawrence
- Lisa Larsen**
Lawrence
- Christian Lyche**
Lawrence

Thank you for voting.

Please take time to review your ballot before casting it; you may request a replacement ballot if necessary.

A	Precinct 42 H46	B	42.1	C	
---	-----------------	---	------	---	--

Official Primary Election Ballot

A	State of Kansas	B	Douglas County	C	August 1, 2017
---	-----------------	---	----------------	---	----------------

! Notice: If you tear, deface, or make a mistake and wrongfully mark any ballot, you must return it to the election board and receive a new ballot.

Making selections



Use black or blue ball point pen to darken oval completely.

To vote for a person, darken the oval to the left of the person's name.

Follow instructions on number of votes allowed for each race.

MUNICIPAL OFFICES

Lawrence City Commission
Vote for THREE(3) or FEWER

- Jennifer Ananda**
Lawrence
- Mike Anderson**
Lawrence
- Bassem Chahine**
Lawrence
- Ken Easthouse**
Lawrence
- Matthew Herbert**
Lawrence
- Lisa Larsen**
Lawrence
- Christian Lyche**
Lawrence
- Dustin Stumblingbear**
Lawrence

Thank you for voting.

Please take time to review your ballot before casting it; you may request a replacement ballot if necessary.

A	Precinct 42 H45	B	42.2 & 42.3 & 42.4	C	
---	-----------------	---	--------------------	---	--

Official Primary Election Ballot

A	State of Kansas	B	Douglas County	C	August 1, 2017
---	-----------------	---	----------------	---	----------------

! Notice: If you tear, deface, or make a mistake and wrongfully mark any ballot, you must return it to the election board and receive a new ballot.

Making selections



Use black or blue ball point pen to darken oval completely.
To vote for a person, darken the oval to the left of the person's name.
Follow instructions on number of votes allowed for each race.

MUNICIPAL OFFICES

Lawrence City Commission
Vote for THREE(3) or FEWER

- Mike Anderson**
Lawrence
- Bassem Chahine**
Lawrence
- Ken Easthouse**
Lawrence
- Matthew Herbert**
Lawrence
- Lisa Larsen**
Lawrence
- Christian Lyche**
Lawrence
- Dustin Stumblingbear**
Lawrence
- Jennifer Ananda**
Lawrence

Thank you for voting.

Please take time to review your ballot before casting it; you may request a replacement ballot if necessary.

A	Precinct 43 CC1	B	43.1	C	
---	-----------------	---	------	---	--

Official Primary Election Ballot

A	State of Kansas	B	Douglas County	C	August 1, 2017
---	-----------------	---	----------------	---	----------------

! Notice: If you tear, deface, or make a mistake and wrongfully mark any ballot, you must return it to the election board and receive a new ballot.

Making selections



Use black or blue ball point pen to darken oval completely.
To vote for a person, darken the oval to the left of the person's name.
Follow instructions on number of votes allowed for each race.

MUNICIPAL OFFICES

Lawrence City Commission
Vote for THREE(3) or FEWER

- Bassem Chahine**
Lawrence
- Ken Easthouse**
Lawrence
- Matthew Herbert**
Lawrence
- Lisa Larsen**
Lawrence
- Christian Lyche**
Lawrence
- Dustin Stumblingbear**
Lawrence
- Jennifer Ananda**
Lawrence
- Mike Anderson**
Lawrence

Thank you for voting.

Please take time to review your ballot before casting it; you may request a replacement ballot if necessary.

A	Precinct 43 CC3	B	43.2 & 43.3	C	
---	-----------------	---	-------------	---	--

Official Primary Election Ballot

1/1

A	State of Kansas	B	Douglas County	C	August 1, 2017
---	-----------------	---	----------------	---	----------------



Notice: If you tear, deface, or make a mistake and wrongfully mark any ballot, you must return it to the election board and receive a new ballot.

Making selections



Use black or blue ball point pen to darken oval completely.

To vote for a person, darken the oval to the left of the person's name.

Follow instructions on number of votes allowed for each race.

MUNICIPAL OFFICES

Lawrence City Commission
Vote for THREE(3) or FEWER

- Ken Easthouse**
Lawrence
- Matthew Herbert**
Lawrence
- Lisa Larsen**
Lawrence
- Christian Lyche**
Lawrence
- Dustin Stumblingbear**
Lawrence
- Jennifer Ananda**
Lawrence
- Mike Anderson**
Lawrence
- Bassem Chahine**
Lawrence

Thank you for voting.

Please take time to review your ballot before casting it; you may request a replacement ballot if necessary.

A	Precinct 44 H45	B	44.1	C	
---	-----------------	---	------	---	--

Official Primary Election Ballot

1/1

A	State of Kansas	B	Douglas County	C	August 1, 2017
---	-----------------	---	----------------	---	----------------



Notice: If you tear, deface, or make a mistake and wrongfully mark any ballot, you must return it to the election board and receive a new ballot.

Making selections



Use black or blue ball point pen to darken oval completely.

To vote for a person, darken the oval to the left of the person's name.

Follow instructions on number of votes allowed for each race.

MUNICIPAL OFFICES

Lawrence City Commission
Vote for THREE(3) or FEWER

- Matthew Herbert**
Lawrence
- Lisa Larsen**
Lawrence
- Christian Lyche**
Lawrence
- Dustin Stumblingbear**
Lawrence
- Jennifer Ananda**
Lawrence
- Mike Anderson**
Lawrence
- Bassem Chahine**
Lawrence
- Ken Easthouse**
Lawrence

Thank you for voting.

Please take time to review your ballot before casting it; you may request a replacement ballot if necessary.

A	Precinct 44 H44	B	44.2	C	
---	-----------------	---	------	---	--

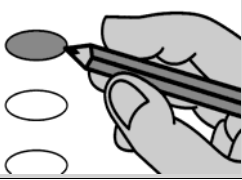
Official Primary Election Ballot

A	State of Kansas	B	Douglas County	C	August 1, 2017
---	-----------------	---	----------------	---	----------------



Notice: If you tear, deface, or make a mistake and wrongfully mark any ballot, you must return it to the election board and receive a new ballot.

Making selections



Use black or blue ball point pen to darken oval completely.

To vote for a person, darken the oval to the left of the person's name.

Follow instructions on number of votes allowed for each race.

MUNICIPAL OFFICES

Lawrence City Commission
Vote for THREE(3) or FEWER

- Lisa Larsen**
Lawrence
- Christian Lyche**
Lawrence
- Dustin Stumblingbear**
Lawrence
- Jennifer Ananda**
Lawrence
- Mike Anderson**
Lawrence
- Bassem Chahine**
Lawrence
- Ken Easthouse**
Lawrence
- Matthew Herbert**
Lawrence

Thank you for voting.

Please take time to review your ballot before casting it; you may request a replacement ballot if necessary.

A	Precinct 45	B		C	
---	-------------	---	--	---	--

Official Primary Election Ballot

1/1

A	State of Kansas	B	Douglas County	C	August 1, 2017
---	-----------------	---	----------------	---	----------------



Notice: If you tear, deface, or make a mistake and wrongfully mark any ballot, you must return it to the election board and receive a new ballot.

Making selections



Use black or blue ball point pen to darken oval completely.

To vote for a person, darken the oval to the left of the person's name.

Follow instructions on number of votes allowed for each race.

MUNICIPAL OFFICES

Lawrence City Commission
Vote for THREE(3) or FEWER

- Christian Lyche**
Lawrence
- Dustin Stumblingbear**
Lawrence
- Jennifer Ananda**
Lawrence
- Mike Anderson**
Lawrence
- Bassem Chahine**
Lawrence
- Ken Easthouse**
Lawrence
- Matthew Herbert**
Lawrence
- Lisa Larsen**
Lawrence

Thank you for voting.

Please take time to review your ballot before casting it; you may request a replacement ballot if necessary.

A	Precinct 46 S3	B	46.1	C	
---	----------------	---	------	---	--

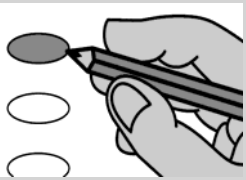
Official Primary Election Ballot

1/1

A	State of Kansas	B	Douglas County	C	August 1, 2017
---	-----------------	---	----------------	---	----------------

! Notice: If you tear, deface, or make a mistake and wrongfully mark any ballot, you must return it to the election board and receive a new ballot.

Making selections



Use black or blue ball point pen to darken oval completely.
To vote for a person, darken the oval to the left of the person's name.
Follow instructions on number of votes allowed for each race.

MUNICIPAL OFFICES

Lawrence City Commission
Vote for THREE(3) or FEWER

- Matthew Herbert**
Lawrence
- Lisa Larsen**
Lawrence
- Christian Lyche**
Lawrence
- Dustin Stumblingbear**
Lawrence
- Jennifer Ananda**
Lawrence
- Mike Anderson**
Lawrence
- Bassem Chahine**
Lawrence
- Ken Easthouse**
Lawrence

Thank you for voting.
Please take time to review your ballot before casting it; you may request a replacement ballot if necessary.

A	Precinct 47	B		C	
---	-------------	---	--	---	--

Official Primary Election Ballot

A	State of Kansas	B	Douglas County	C	August 1, 2017
---	-----------------	---	----------------	---	----------------

! Notice: If you tear, deface, or make a mistake and wrongfully mark any ballot, you must return it to the election board and receive a new ballot.

Making selections



Use black or blue ball point pen to darken oval completely.
To vote for a person, darken the oval to the left of the person's name.
Follow instructions on number of votes allowed for each race.

MUNICIPAL OFFICES

Lawrence City Commission
Vote for THREE(3) or FEWER

- Jennifer Ananda**
Lawrence
- Mike Anderson**
Lawrence
- Bassem Chahine**
Lawrence
- Ken Easthouse**
Lawrence
- Matthew Herbert**
Lawrence
- Lisa Larsen**
Lawrence
- Christian Lyche**
Lawrence
- Dustin Stumblingbear**
Lawrence

Thank you for voting.

Please take time to review your ballot before casting it; you may request a replacement ballot if necessary.

A	Precinct 48	B		C	
---	-------------	---	--	---	--

Official Primary Election Ballot

1/1

A	State of Kansas	B	Douglas County	C	August 1, 2017
---	-----------------	---	----------------	---	----------------



Notice: If you tear, deface, or make a mistake and wrongfully mark any ballot, you must return it to the election board and receive a new ballot.

Making selections



Use black or blue ball point pen to darken oval completely.

To vote for a person, darken the oval to the left of the person's name.

Follow instructions on number of votes allowed for each race.

MUNICIPAL OFFICES

Lawrence City Commission
Vote for THREE(3) or FEWER

- Mike Anderson**
Lawrence
- Bassem Chahine**
Lawrence
- Ken Easthouse**
Lawrence
- Matthew Herbert**
Lawrence
- Lisa Larsen**
Lawrence
- Christian Lyche**
Lawrence
- Dustin Stumblingbear**
Lawrence
- Jennifer Ananda**
Lawrence

Thank you for voting.

Please take time to review your ballot before casting it; you may request a replacement ballot if necessary.

A	Precinct 49	B		C	
---	-------------	---	--	---	--

Official Primary Election Ballot

1/1

A	State of Kansas	B	Douglas County	C	August 1, 2017
---	-----------------	---	----------------	---	----------------



Notice: If you tear, deface, or make a mistake and wrongfully mark any ballot, you must return it to the election board and receive a new ballot.

Making selections



Use black or blue ball point pen to darken oval completely.

To vote for a person, darken the oval to the left of the person's name.

Follow instructions on number of votes allowed for each race.

USD OFFICES

**USD 343 School Board
Member**
USD 343 Position 6
Vote for ONE (1)

- Stephanie Confer**
Lecompton
- Nick Fergus**
Lecompton
- Brad Guess**
Lawrence
- Debra L. Walburn**
Lawrence

Thank you for voting.

Please take time to review your ballot before casting it; you may request a replacement ballot if necessary.

A	Precinct 56 S19	B	56.01 & 56.05	C	
---	-----------------	---	---------------	---	--

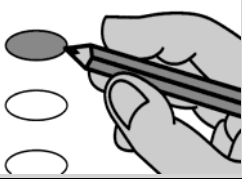
Official Primary Election Ballot

A	State of Kansas	B	Douglas County	C	August 1, 2017
---	-----------------	---	----------------	---	----------------



Notice: If you tear, deface, or make a mistake and wrongfully mark any ballot, you must return it to the election board and receive a new ballot.

Making selections



Use black or blue ball point pen to darken oval completely.

To vote for a person, darken the oval to the left of the person's name.

Follow instructions on number of votes allowed for each race.

USD OFFICES

**USD 343 School Board
Member**
USD 343 Position 6
Vote for ONE (1)

- Nick Fergus**
Lecompton
- Brad Guess**
Lawrence
- Debra L. Walburn**
Lawrence
- Stephanie Confer**
Lecompton

Thank you for voting.

Please take time to review your ballot before casting it; you may request a replacement ballot if necessary.

A	Precinct 56 S2	B	56.4	C	
---	----------------	---	------	---	--

Official Primary Election Ballot

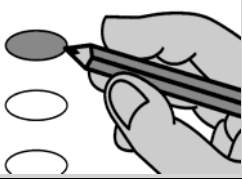
1/1

A	State of Kansas	B	Douglas County	C	August 1, 2017
---	-----------------	---	----------------	---	----------------



Notice: If you tear, deface, or make a mistake and wrongfully mark any ballot, you must return it to the election board and receive a new ballot.

Making selections



Use black or blue ball point pen to darken oval completely.

To vote for a person, darken the oval to the left of the person's name.

Follow instructions on number of votes allowed for each race.

USD OFFICES

**USD 343 School Board
Member**
USD 343 Position 6
Vote for ONE (1)

- Brad Guess** Lawrence
- Debra L. Walburn** Lawrence
- Stephanie Confer** Lecompton
- Nick Fergus** Lecompton

Thank you for voting.

Please take time to review your ballot before casting it; you may request a replacement ballot if necessary.

A	Precinct 57 S2	B	57.01-02	C	
---	----------------	---	----------	---	--

Official Primary Election Ballot

1/1

A	State of Kansas	B	Douglas County	C	August 1, 2017
---	-----------------	---	----------------	---	----------------



Notice: If you tear, deface, or make a mistake and wrongfully mark any ballot, you must return it to the election board and receive a new ballot.

Making selections



Use black or blue ball point pen to darken oval completely.

To vote for a person, darken the oval to the left of the person's name.

Follow instructions on number of votes allowed for each race.

USD OFFICES

**USD 343 School Board
Member**
USD 343 Position 6
Vote for ONE (1)

- Debra L. Walburn**
Lawrence
- Stephanie Confer**
Lecompton
- Nick Fergus**
Lecompton
- Brad Guess**
Lawrence

Thank you for voting.

Please take time to review your ballot before casting it; you may request a replacement ballot if necessary.

A	Precinct 64 H45 343	B	64.1	C	
---	---------------------	---	------	---	--

Official Primary Election Ballot

A	State of Kansas	B	Douglas County	C	August 1, 2017
---	-----------------	---	----------------	---	----------------

! Notice: If you tear, deface, or make a mistake and wrongfully mark any ballot, you must return it to the election board and receive a new ballot.

Making selections
Use black or blue ball point pen to darken oval completely.
To vote for a person, darken the oval to the left of the person's name.
Follow instructions on number of votes allowed for each race.

MUNICIPAL OFFICES

Lawrence City Commission
Vote for THREE(3) or FEWER

- Bassem Chahine**
Lawrence
- Ken Easthouse**
Lawrence
- Matthew Herbert**
Lawrence
- Lisa Larsen**
Lawrence
- Christian Lyche**
Lawrence
- Dustin Stumblingbear**
Lawrence
- Jennifer Ananda**
Lawrence
- Mike Anderson**
Lawrence

Thank you for voting.
Please take time to review your ballot before casting it; you may request a replacement ballot if necessary.

A	Precinct 70	B		C	
---	-------------	---	--	---	--

Official Primary Election Ballot

A	State of Kansas	B	Douglas County	C	August 1, 2017
---	-----------------	---	----------------	---	----------------

! Notice: If you tear, deface, or make a mistake and wrongfully mark any ballot, you must return it to the election board and receive a new ballot.

Making selections
Use black or blue ball point pen to darken oval completely.
To vote for a person, darken the oval to the left of the person's name.
Follow instructions on number of votes allowed for each race.

MUNICIPAL OFFICES

Lawrence City Commission
Vote for THREE(3) or FEWER

- Ken Easthouse**
Lawrence
- Matthew Herbert**
Lawrence
- Lisa Larsen**
Lawrence
- Christian Lyche**
Lawrence
- Dustin Stumblingbear**
Lawrence
- Jennifer Ananda**
Lawrence
- Mike Anderson**
Lawrence
- Bassem Chahine**
Lawrence

Thank you for voting.
Please take time to review your ballot before casting it; you may request a replacement ballot if necessary.

A	Precinct 71	B		C	
---	-------------	---	--	---	--

Official Primary Election Ballot

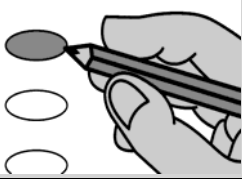
1/1

A	State of Kansas	B	Douglas County	C	August 1, 2017
---	-----------------	---	----------------	---	----------------



Notice: If you tear, deface, or make a mistake and wrongfully mark any ballot, you must return it to the election board and receive a new ballot.

Making selections



Use black or blue ball point pen to darken oval completely.

To vote for a person, darken the oval to the left of the person's name.

Follow instructions on number of votes allowed for each race.

MUNICIPAL OFFICES

Lawrence City Commission
Vote for THREE(3) or FEWER

- Matthew Herbert**
Lawrence
- Lisa Larsen**
Lawrence
- Christian Lyche**
Lawrence
- Dustin Stumblingbear**
Lawrence
- Jennifer Ananda**
Lawrence
- Mike Anderson**
Lawrence
- Bassem Chahine**
Lawrence
- Ken Easthouse**
Lawrence

Thank you for voting.

Please take time to review your ballot before casting it; you may request a replacement ballot if necessary.

A	Precinct 74	B		C	
---	-------------	---	--	---	--

Official Primary Election Ballot

1/1

A	State of Kansas	B	Douglas County	C	August 1, 2017
---	-----------------	---	----------------	---	----------------

! Notice: If you tear, deface, or make a mistake and wrongfully mark any ballot, you must return it to the election board and receive a new ballot.

Making selections



Use black or blue ball point pen to darken oval completely.

To vote for a person, darken the oval to the left of the person's name.

Follow instructions on number of votes allowed for each race.

MUNICIPAL OFFICES

Lawrence City Commission
Vote for THREE(3) or FEWER

- Lisa Larsen**
Lawrence
- Christian Lyche**
Lawrence
- Dustin Stumblingbear**
Lawrence
- Jennifer Ananda**
Lawrence
- Mike Anderson**
Lawrence
- Bassem Chahine**
Lawrence
- Ken Easthouse**
Lawrence
- Matthew Herbert**
Lawrence

Thank you for voting.

Please take time to review your ballot before casting it; you may request a replacement ballot if necessary.

A	Precinct 76	B		C	
---	-------------	---	--	---	--

Official Primary Election Ballot

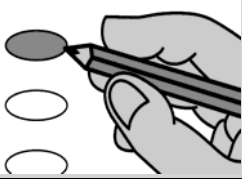
1/1

A	State of Kansas	B	Douglas County	C	August 1, 2017
---	-----------------	---	----------------	---	----------------



Notice: If you tear, deface, or make a mistake and wrongfully mark any ballot, you must return it to the election board and receive a new ballot.

Making selections



Use black or blue ball point pen to darken oval completely.

To vote for a person, darken the oval to the left of the person's name.

Follow instructions on number of votes allowed for each race.

MUNICIPAL OFFICES

Lawrence City Commission
Vote for THREE(3) or FEWER

- Christian Lyche**
Lawrence
- Dustin Stumblingbear**
Lawrence
- Jennifer Ananda**
Lawrence
- Mike Anderson**
Lawrence
- Bassem Chahine**
Lawrence
- Ken Easthouse**
Lawrence
- Matthew Herbert**
Lawrence
- Lisa Larsen**
Lawrence

Thank you for voting.

Please take time to review your ballot before casting it; you may request a replacement ballot if necessary.

A	Precinct 77	B		C	
---	-------------	---	--	---	--