

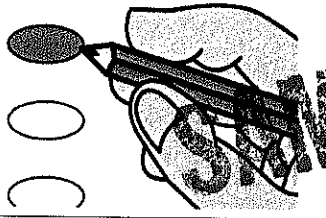
Instructions to Voter



Notice: If you tear, deface or make a mistake and wrongfully mark any ballot, you must return it to the election board and receive a new ballot or set of ballots.

To vote in favor of any question submitted upon this ballot, darken the oval to the left of the word, "Yes." To vote against any question submitted upon this ballot, darken the oval to the left of the word "No."

To vote you must darken the oval completely



SAMPLE BALLOT

QUESTION SUBMITTED

City of Baldwin City, Kansas
Proposition No. 1

Shall the following be adopted?

Shall the City of Baldwin City, Kansas, be authorized to impose a one-half percent (.50%) city-wide retailers' sales tax for the purpose of paying the costs of general public infrastructure improvements in the City, including street, bridge, storm drainage, equipment and public facility improvements, and also including the payment of principal and interest on bonds issued or to be issued by or on behalf of the City to finance such improvements, with collection of such sales tax to commence upon expiration of a current one-half percent (.50%) city-wide swimming pool sales tax, on April 1, 2010; all pursuant to the provisions of K.S.A. 12-187 *et seq.* as amended?

- YES
- NO

QUESTION SUBMITTED

City of Baldwin City, Kansas
Proposition No. 2

Shall the following be adopted?

Shall the City of Baldwin City, Kansas, be authorized to impose a new one-quarter percent (.25%) city-wide retailers' sales tax for the purpose of paying the costs of general quality of life improvements in the City, including library, parks and recreation facility improvements, and also including the payment of principal and interest on bonds issued or to be issued by or on behalf of the City to finance such improvements, with collection of such sales tax to commence on April 1, 2010; all pursuant to the provisions of K.S.A. 12-187 *et seq.*, as amended?

- YES
- NO

SAMPLE BALLOT

A	Douglas County	B	State of Kansas	C	November 3, 2009
---	----------------	---	-----------------	---	------------------

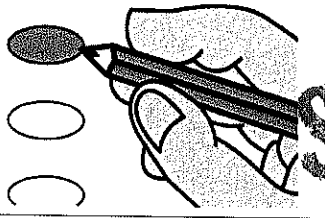
Instructions to Voter



Notice: If you tear, deface or make a mistake and wrongfully mark any ballot, you must return it to the election board and receive a new ballot or set of ballots.

To vote in favor of any question submitted upon this ballot, darken the oval to the left of the word, "Yes." To vote against any question submitted upon this ballot, darken the oval to the left of the word "No."

To vote you must darken the oval completely



SAMPLE BALLOT

QUESTION SUBMITTED

City of Baldwin City, Kansas
Proposition No. 1

Shall the following be adopted?

Shall the City of Baldwin City, Kansas, be authorized to impose a one-half percent (.50%) city-wide retailers' sales tax for the purpose of paying the costs of general public infrastructure improvements in the City, including street, bridge, storm drainage, equipment and public facility improvements, and also including the payment of principal and interest on bonds issued or to be issued by or on behalf of the City to finance such improvements, with collection of such sales tax to commence upon expiration of a current one-half percent (.50%) city-wide swimming pool sales tax, on April 1, 2010; all pursuant to the provisions of K.S.A. 12-187 *et seq.*, as amended?

- YES
- NO

SAMPLE BALLOT

QUESTION SUBMITTED

City of Baldwin City, Kansas
Proposition No. 2

Shall the following be adopted?

Shall the City of Baldwin City, Kansas, be authorized to impose a new one-quarter percent (.25%) city-wide retailers' sales tax for the purpose of paying the costs of general quality of life improvements in the City, including library, parks and recreation facility improvements, and also including the payment of principal and interest on bonds issued or to be issued by or on behalf of the City to finance such improvements, with collection of such sales tax to commence on April 1, 2010; all pursuant to the provisions of K.S.A. 12-187 *et seq.*, as amended?

- YES
- NO

SAMPLE BALLOT

A	Precinct 61 Split 3&4	B	Typ:01 Seq:0002 Spl:01	C
---	-----------------------	---	------------------------	---

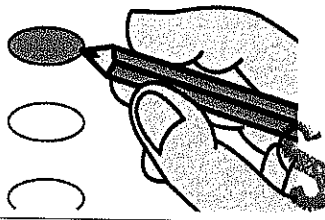
Instructions to Voter



Notice: If you tear, deface or make a mistake and wrongfully mark any ballot, you must return it to the election board and receive a new ballot or set of ballots.

To vote in favor of any question submitted upon this ballot, darken the oval to the left of the word, "Yes." To vote against any question submitted upon this ballot, darken the oval to the left of the word "No."

To vote you must darken the oval completely



SAMPLE BALLOT

QUESTION SUBMITTED

City of Baldwin City, Kansas
Proposition No. 1

Shall the following be adopted?

Shall the City of Baldwin City, Kansas, be authorized to impose a one-half percent (.50%) city-wide retailers' sales tax for the purpose of paying the costs of general public infrastructure improvements in the City, including street, bridge, storm drainage, equipment and public facility improvements, and also including the payment of principal and interest on bonds issued or to be issued by or on behalf of the City to finance such improvements, with collection of such sales tax to commence upon expiration of a current one-half percent (.50%) city-wide swimming pool sales tax, on April 1, 2010; all pursuant to the provisions of K.S.A. 12-187 et seq., as amended?

- YES
- NO

SAMPLE BALLOT

QUESTION SUBMITTED

City of Baldwin City, Kansas
Proposition No. 2

Shall the following be adopted?

Shall the City of Baldwin City, Kansas, be authorized to impose a new one-quarter percent (.25%) city-wide retailers' sales tax for the purpose of paying the costs of general quality of life improvements in the City, including library, parks and recreation facility improvements, and also including the payment of principal and interest on bonds issued or to be issued by or on behalf of the City to finance such improvements, with collection of such sales tax to commence on April 1, 2010; all pursuant to the provisions of K.S.A. 12-187 et seq., as amended?

- YES
- NO

SAMPLE BALLOT