

# **BOARD OF COUNTY COMMISSIONERS OF DOUGLAS COUNTY, KANSAS**

## **WEDNESDAY, JUNE 3, 2009**

6:35 p.m. (Commission Chamber)

-Convene

### **CONSENT AGENDA**

(1) (a) Consider approval of Commission Orders;

### **REGULAR AGENDA**

(2) Discussion of proposal from Lawrence Community Shelter to use the sanctuary portion of the County's building at 13<sup>th</sup> and Massachusetts as an interim overnight homeless shelter for up to 24 months (Loring Henderson)

(3) Other Business

- (a) Consider approval of Accounts Payable (if necessary)
- (b) Appointments
- (c) Miscellaneous
- (d) Public Comment

(4) Adjourn

## **MONDAY, JUNE 8, 2009 (Light Agenda)**

### **WEDNESDAY, JUNE 10, 2009 (Baldwin City Library)**

6:35 p.m. Joint session with Baldwin City Planning Commission, City Council and Douglas County Commission regarding draft Baldwin Zoning and Planning Regulations

- Work session with Baldwin Planning Commission on draft Zoning and Subdivision Regulations [Baldwin City Council also invited to attend]
- Discussion of Hwy 56 corridor study and interests/concerns of this highway improvement on development of Baldwin City
- Discussion of county Zoning Regulations for commercial and industrial development as they would be applied within the Urban Growth Area of Baldwin City
- Discussion of the county Subdivision Regulations, administrative procedures for property divisions that apply within the Urban Growth Area of Baldwin City [sections 20-804 Cluster Development and 20-805 Large Parcel Property Division]

### **FRIDAY, JUNE 12, 2009**

12:00-2:00 p.m. – Special lunch session with Planning Commission, City Commission and Board of County Commissions during Planning Commission training (City Hall)

### **MONDAY, JUNE 15, 2009**

-Consider acquisition of two ambulances (Pam Madl)

-Presentation by Tom Huntzinger, Watershed Coordinator for the upper Wakarusa WRAPS program

-Presentation by the County departments (Public Works)

### **WEDNESDAY, JUNE 17, 2009 (LECOMPTON CITY HALL)**

6:35 p.m. -Joint meeting with Lecompton City Council (in Lecompton)

- Trees in the right-of-way at the intersection of Woodson Avenue and 1029

- The ditch just north of the church
- Briefing on Route 438 reconstruction project

**MONDAY, JUNE 22, 2009**

**WEDNESDAY, JUNE 24, 2009**

-Consider and conduct a Public Hearing for Southeast Lawrence Sanitary Sewer Main Benefit District No. 1 – Sanitary Sewer Improvements; Resolution No. 06-30; Southeast Lawrence Sanitary Sewer Main Benefit District No. 2 – Sanitary Sewer Improvements; Resolution No. 06-31; and Southeast Lawrence Sanitary Sewer Main Benefit District No. 3 – Sanitary Sewer Improvements;

-Consider the adoption of the Assessment Resolution for the SW Lawrence Sanitary Sewer Main Benefit District 1, 2, 3

-Consider approval of Z-11-19-08, a request to rezone 58.99 acres located northeast of the intersection of N 1800 Road & E 700 Road, S of Lecompton from A (Agricultural) to B-2 (General Business District). Submitted by Paul Werner Architects, for Rockwall Farms L.C., property owner of record. (PC Item 5; approved 8-0 on 5/18/09) Mary Miller is the Planner.

-Consider approval of CPA-3-2-09, a Comprehensive Plan Amendment for revisions to Horizon 2020 Chapter Four – Growth Management and Chapter 6 – Commercial Land Use to expand the possible locations of conference, recreation, or tourism facility uses in the rural area of Douglas County. Initiated by the Planning Commission on April 20, 2009. Requested by Rockwall Farms, LC. (PC Item 4; approved 6-2 on 5/18/09) Dan Warner is the Planner.

**MONDAY, JUNE 29, 2009**

**WEDNESDAY, JULY 1, 2009**

**MONDAY, JULY 6, 2009**

**WEDNESDAY, JULY 8, 2009 (Light Agenda)**

**MONDAY, JULY 13, 2009**

Public Hearing for the annexation of the former Farmland Industries property

**WEDNESDAY, JULY 15, 2009**

Public Hearing for Farmland Annexation

**WEDNESDAY, JULY 29, 2009**

-Consider the adopting a Resolution authorizing the Sale of Bonds for the Southeast Lawrence Sanitary Sewer Main Benefit District No. 1 – Sanitary Sewer Improvements; Southeast Lawrence Sanitary Sewer Main Benefit District No. 2 – Sanitary Sewer Improvements; and Southeast Lawrence Sanitary Sewer Main Benefit District No. 3 – Sanitary Sewer Improvements;

**MONDAY, AUGUST 3, 2009**

-Consider adoption of Bond Resolution for Southeast Lawrence Sanitary Sewer Main Benefit District No. 1 – Sanitary Sewer Improvements; Southeast Lawrence Sanitary Sewer Main Benefit District No. 2 – Sanitary Sewer Improvements; and Southeast Lawrence Sanitary Sewer Main Benefit District No. 3 – Sanitary Sewer Improvements;

**MONDAY, SEPTEMBER 7, 2009**

-No Commission Meeting in Observation of Labor Day

**MONDAY, SEPTEMBER 21, 2009 (Light Agenda)**

**WEDNESDAY, NOVEMBER 4, 2009**

-Lone Star Weed Discussion

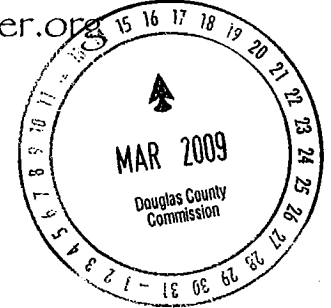
*Note: The Douglas County Commission meets regularly on Mondays at 8:10 A.M. and Wednesdays at 6:35 P.M. at the Douglas County Courthouse. Specific regular meeting dates that are not listed above have not been cancelled unless specifically noted on this schedule.*



214 W 10th  
Lawrence, KS 66044

PHONE: (785) 832-8864  
FAX: (785) 832-1053

www.lawrenceshelter.org



March 16, 2009

Craig Weinaug, Administrator  
Douglas County, Kansas  
1100 Massachusetts Street  
Lawrence, KS 66044

Hand Delivered

Dear Craig:

This letter is to express interest on the part of the Lawrence Community Shelter to use the chapel portion of the Douglas County owned building on the corner of 13<sup>th</sup> and Massachusetts as an interim night shelter for a projected period of 12 to 24 months.

Our request is prompted by the announced closing of the Salvation Army's night shelter on May 1 which means up to 50 individuals and families will be without emergency housing unless the Lawrence Community Shelter can locate a building for an interim period between May 1 and a future date when we move into a larger, permanent location.

It is our plan that the chapel wing would be used only at night and only for people authorized to be in the shelter. It would not be used during the daytime. All daytime activities will remain at the 10<sup>th</sup> and Kentucky main location for the Lawrence Community Shelter until a new permanent site is acquired. An evening meal prepared by outside volunteers would be brought in and served to people admitted to the night shelter.

The Board of Directors of the Lawrence Community Shelter has a site committee that has identified a potential permanent building but acquisition, if confirmed, fundraising, and renovation will take some time during which the Community Shelter is seeking an interim second building to house the former Salvation Army guests.

I would appreciate the opportunity to explore this possibility further with you and the Douglas County Commissioners. Thank you for your consideration.

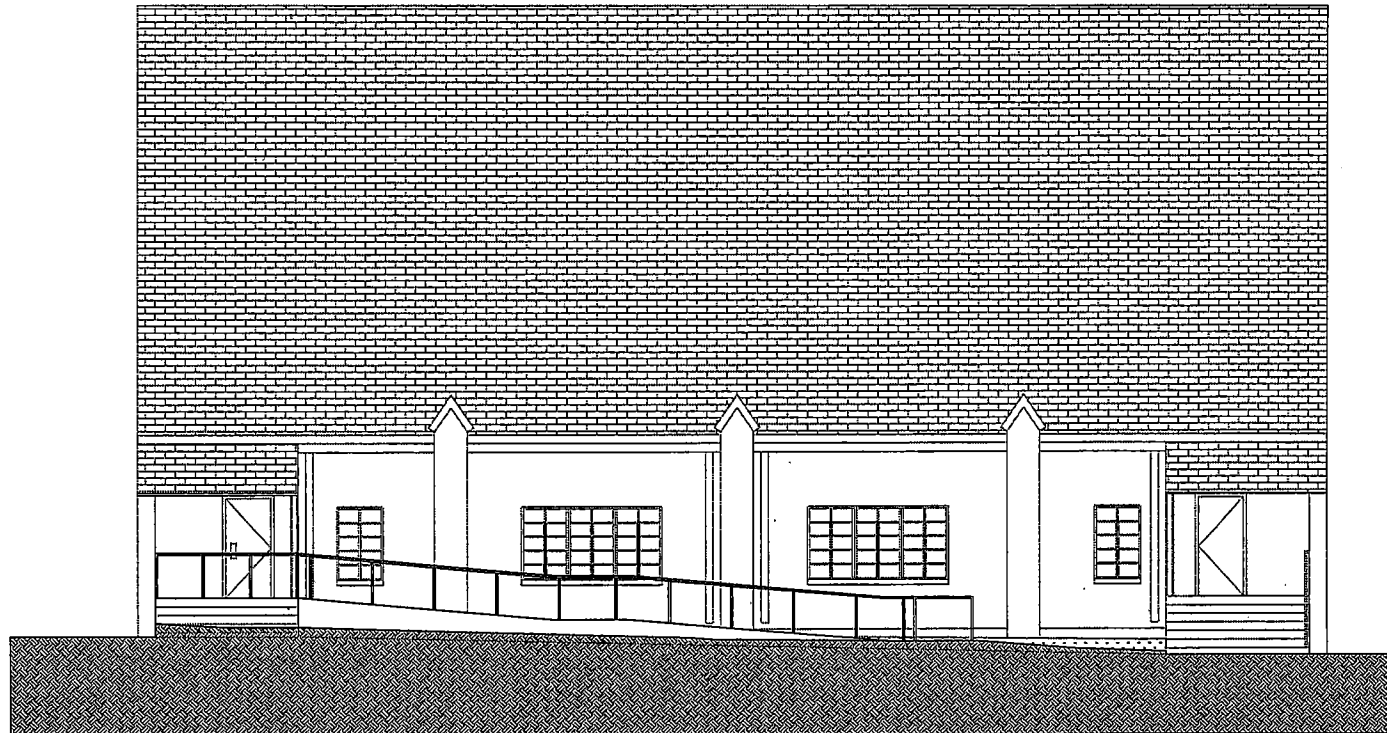
Very truly yours,

Loring Henderson  
Director

Mission Statement: The mission of the Lawrence Community Shelter is to provide safe shelter and comprehensive support services and programs that provide a path to a positive future for people experiencing homelessness and people who are at risk of homelessness.



sabatini  
architects llc

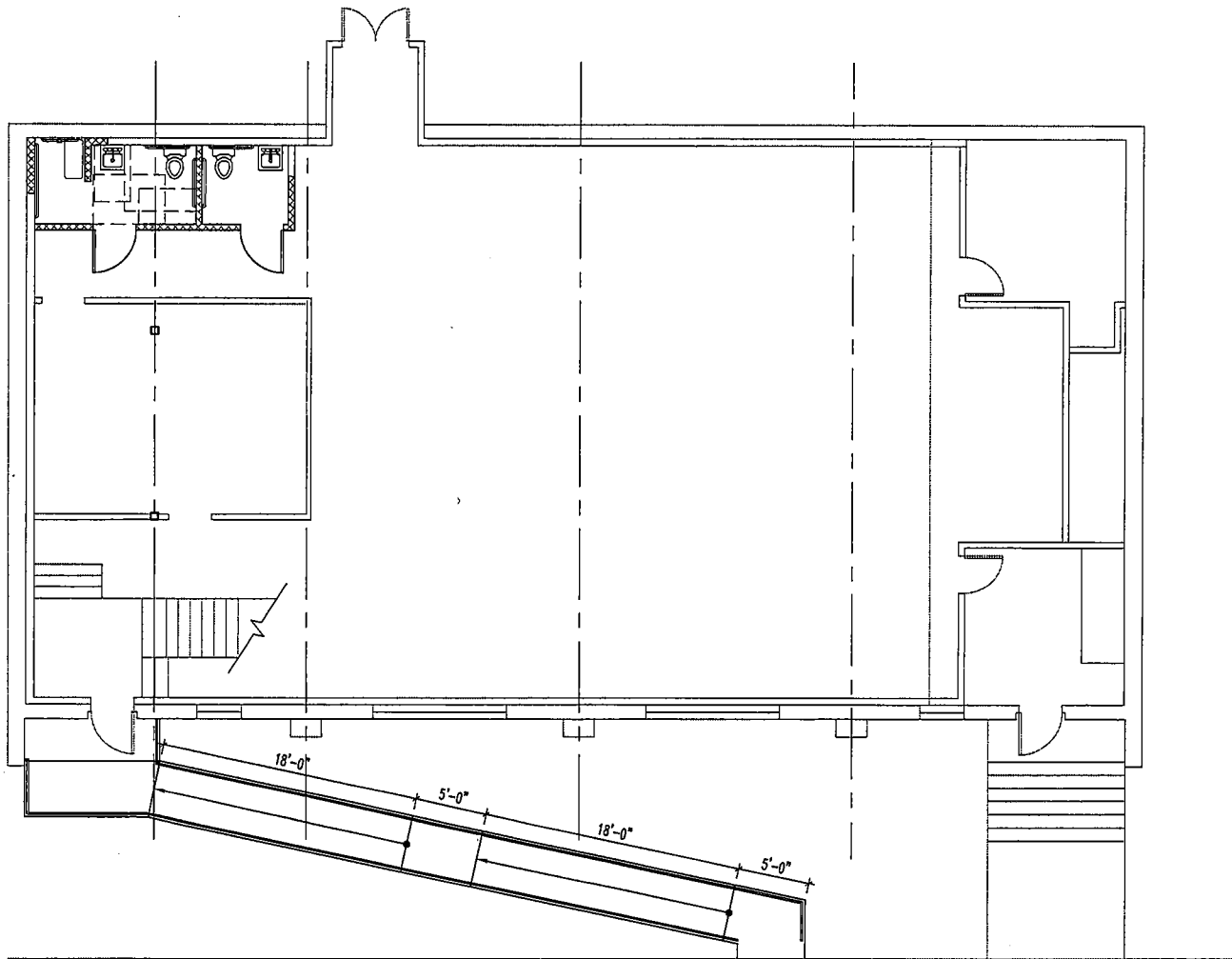


**TEMPORARY SHELTER SOUTH ELEVATION**

Scale: 1/8" = 1'-0"

05.19.2009

sabatini  
architects inc.



**TEMPORARY SHELTER PROPOSED PLAN**

Scale: 1/8" = 1'-0"

05.20.2009

