

BOARD OF COUNTY COMMISSIONERS OF DOUGLAS COUNTY, KANSAS

WEDNESDAY, FEBRUARY 3, 2010

-4:00 p.m. – County Commission Meeting
-Convene

CONSENT AGENDA

- (1)(a) Consider approval of Commission Orders;
- (b) Consider approval of Annual Noxious Weed Eradication Progress Report 2009 (Keith Browning);
- (c) Consider approval of Annual Noxious Weed Management Plan (Keith Browning);
- (d) Consider approval of Application for an authorized emergency vehicle permit for Louie Disney; Duane B. Filkins; John E. Steele, Jr. (two vehicles); Dillon Filkins; and Joshua A. Wood (Sheriff's Office); and
- (e) Acknowledge fee reports for December 2009.

REGULAR AGENDA

- (2) Discuss and consider a City of Lawrence request for funding assistance in the amount of \$277,715 for improvements at 31st Street and Kasold Drive (Keith Browning)
- (3) Other Business
 - (a) Consider approval of Accounts Payable (if necessary)
 - (b) Appointments
 - (c) Miscellaneous
 - (d) Public Comment
- (4) Adjourn

WEDNESDAY, FEBRUARY 10, 2010

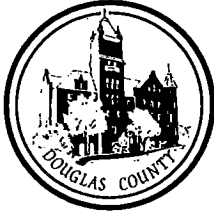
TUESDAY, FEBRUARY 16, 2010

-6:00 p.m. -Joint City/County/School District Meeting at City Hall (two or more Commissioners may attend.)

WEDNESDAY, FEBRUARY 17, 2010

WEDNESDAY, FEBRUARY 24, 2010

Note: The Douglas County Commission meets regularly on Wednesdays at 4:00 P.M. for administrative items and 6:35 P.M. for public items at the Douglas County Courthouse. Specific regular meeting dates that are not listed above have not been cancelled unless specifically noted on this schedule.



DOUGLAS COUNTY PUBLIC WORKS

1242 Massachusetts Street
Lawrence, KS 66044-3350
(785) 832-5293 Fax (785) 841-0943
dgcopubw@douglas-county.com
www.douglas-county.com

Keith A. Browning, P.E.
Director of Public Works/County Engineer

MEMORANDUM

To : Board of County Commissioners

From: Keith A. Browning, P.E., Director of Public Works/County Engineer
Mike Perkins, Operations Division Manager *MP*

Date : January 25, 2010

Re : Consent Agenda Approval of Annual Noxious Weed Eradication Progress Report 2009

Attached is a copy of the Douglas County Noxious Weed Eradication Progress Report 2009. This report will be sent to the Kansas Department of Agriculture and requires signatures of the Board of County Commissioners.

Action Required: Consent agenda approval of the 2009 Noxious Weed Eradication Progress Report and signatures of all Board of County Commission members.

Annual Noxious Weed Eradication Progress Report 2009



as required by KSA 2-1316

Douglas County Noxious Weed Dept

Noxious Weed Supervisor:
John Landon

Noxious Weed Department Personnel

Name	Job Title	% Time Spent on Noxious Weeds	Weed Director Salary
John Landon	Vegetation Control Specialist	100	\$37,366.00
Alan Hollinger	VMII	100	\$34,958.00
Terence Cooper	Seasonal Laborer	100	\$7,764.75
Donna Miller	Secretary	50	

Financial Summary - Noxious Weed Fund

Amount

Mil levy for 2009	118366
County valuation for 2009	\$0.00
Beginning Budget Balance for 2009	\$228,000.00

Revenues

Chemical Sales	\$85,838.15
Equip Rentals	\$4,499.50
Labor Reimbursments	\$4,110.20
Sales Tax Collected	\$0.00
Total Revenue	\$94,447.85

Expenditures

Commodities - Chemicals	\$97,408.79
Commodities - Other	\$370.98
Contractual Expenses	\$6,135.65
Personnel Expenses	\$83,011.97
Transfer Equip Reserve	\$10,000.00
Total Expenditures	\$196,927.39
Ending Budget Balance	\$31,072.61
Carryover to next year's budget for 2009 to 2010	\$0.00

Capital Outlay Fund

Amount

Beginning Balance	\$228,000.00
Receipts	\$0.00
Expenditures	\$196,927.39
Ending Balance	\$31,072.61

FYI - this budget is used out of a "General Fund" shared with others. So any revenues received DO NOT go back into a separate budget for Noxious Weed Department. All parts and fuel were paid for out of Douglas County "Fleet Budget".

Annual Noxious Weed Eradication Progress Report

Douglas County Noxious Weed Dept

Year
2009 ★

Estimated Acreage of Noxious Weeds

Noxious Weed	Private	County	Township	State	Federal	City	Total
Field Bindweed	1667.8		2091.0	811.7	837.6	1615.8	7023.9
Johnsongrass	1674.0		2183.2	362.3	504.6	724.7	5448.8
Musk Thistle	2416.3		2676.0	795.1	664.3	1161.0	7712.7
Purple Loosestrife						306.9	306.9
Sericea Lespedeza	1972.4		1576.1	577.3		120.8	4246.6
Totals	7730.5		8526.3	2546.4	2006.5	3929.2	24738.9

Estimated Acreage of Noxious Weed on Private Land sub-section

Noxious Weed	Wheat	Corn	Soybean	Grain	CRP	Pasture	Other	Fallow	Non-Ag	Total
Field Bindweed						426.6	516.5			1667.8
Johnsongrass						314.0	635.3			1674.0
Musk Thistle						1392.3	238.9			2416.3
Sericea Lespedeza						939.7	126.8			1972.4
Totals						3072.6	1517.5			7730.5

Weeds declared Noxious by the County: Multiflora Rose Bull Thistle

Herbicide Disbursement Summary

Chemical	Purchase Price	Cost Share Price	Total Disbursed
2-4 D	\$11.70	\$15.00	972.500 gal
GLYPHOSATE	\$23.95	\$24.00	475.000 gal
IMAZAPIC	\$2.17	\$0.00	144.000 oz
METSULFURON METHYL	\$6.97	\$17.00	56.000 oz
PICLORAM	\$67.96	\$57.00	425.490 gal
TRICLOPYR	\$59.95	\$51.00	99.000 gal
TRICLOPYR + VISTA	\$46.45	\$41.00	580.090 gal
Triisopropanolammonium salt	\$275.80	\$213.00	20.000 gal
Triisopropanolammonium salt	\$70.17	\$59.00	10.000 qt

Enforcement Summary

Warning Notices	3
Legal Notices	144
Court Cases	0

Diversion Agreements	0
Accounts to Tax Roll	0
Meetings Sponsored	0

Demonstration Plots	0
Feed and Hay Inspection	0
Publish General Notice	1

Enforcement Comments:

We certify this is a correct copy of the Douglas County Noxious Weed Dept Program for 2009

We certify that John Landon is employed as Douglas County Noxious Weed Dept Director for 2010

Chairman, Board of County Commissioners _____ Date _____

County Commissioner _____ Date _____

County Commissioner _____ Date _____

County Commissioner _____ Date _____

County Commissioner _____ Date 1/20/10

County Noxious Weed Director _____ Date _____

**Annual Noxious Weed Eradication Progress Report
Treatment Summary for Noxious Weeds**

Douglas County Noxious Weed Dept

2009 ★

Field Bindweed

Enforcement	January	February	March	April	May	June	July	August	September	October	November	December:	Totals
Warning Notice													0
Legal Notice						1	1						2
Court Cases													0
Diversion Agreements													0

Acreage Treated	January	February	March	April	May	June	July	August	September	October	November	December:	Totals
County								214.8					214.8
Private Corn								80.0					80.0
Private Non-Ag						10.0							10.0
Private Other					10.0	50.0	40.0	30.0	10.0				140.0
Private Pasture						10.0	10.0	10.0	15.0				45.0
State					95.0		82.0						177.0
Township							6.4						6.4
Total Acreage					105.0	70.0	138.4	334.8	25.0				673.2

Approved Herbicides and Methods	January	February	March	April	May	June	July	August	September	October	November	December:	Totals
2-4 D AMINE							10.0	105.0	15.0				130.0
Milestone (qt)							6.4						6.4
ROUNDUP					10.0	70.0	40.0	25.0	10.0				155.0
TORDON + 2-4 D					95.0		82.0	204.8					381.8
Total Acreage					105.0	70.0	138.4	334.8	25.0				673.2

**Annual Noxious Weed Eradication Progress Report
Treatment Summary for Noxious Weeds**

Douglas County Noxious Weed Dept

2009 ★

Johnsongrass

Enforcement	January	February	March	April	May	June	July	August	September	October	November	December:	Totals
Warning Notice													0
Legal Notice						1	10	2					13
Court Cases													0
Diversion Agreements													0

Acreage Treated	January	February	March	April	May	June	July	August	September	October	November	December:	Totals
City									10.0				10.0
Private Corn					10.0			10.0					20.0
Private CRP					5.0			15.0					20.0
Private Non-Ag						2.0		3.0					5.0
Private Other					230.0	135.0	105.0	60.0	45.0				575.0
Private Pasture				10.0		5.0	10.0	20.0	15.0				60.0
Private Soybean					40.0		30.0		10.0				80.0
State					10.0		13.2	5.0					28.2
Township						9.0		9.0					18.0
Total Acreage				10.0	295.0	151.0	158.2	122.0	80.0				816.2

Approved Herbicides and Methods	January	February	March	April	May	June	July	August	September	October	November	December:	Totals
PLATEAU						6.0		12.0					18.0
ROUNDUP				10.0	295.0	145.0	158.2	110.0	80.0				798.2
Total Acreage				10.0	295.0	151.0	158.2	122.0	80.0				816.2

**Annual Noxious Weed Eradication Progress Report
Treatment Summary for Noxious Weeds**

**Douglas County Noxious Weed Dept
2009 ★**

Musk Thistle

Enforcement	January	February	March	April	May	June	July	August	September	October	November	December:	Totals
Warning Notice				3									3
Legal Notice					10	61	20						91
Court Cases													0
Diversion Agreements													0

Acreage Treated	January	February	March	April	May	June	July	August	September	October	November	December:	Totals
City						1920.1							1920.1
County					264.0	102.4						256.0	622.4
Private CRP						5.0	5.0						10.0
Private Non-Ag					1.0	11.0							12.0
Private Other			90.4	10.0			5.0						105.4
Private Pasture		16.0	2386.3	795.4	2712.8	491.3	284.7	126.7	188.5	320.0	165.7	90.0	7577.4
State											20.0		20.0
Township				7.0	134.0	553.4							694.4
Total Acreage		16.0	2476.7	812.4	3111.8	3083.2	294.7	126.7	188.5	320.0	185.7	346.0	10961.7

Approved Herbicides and Methods	January	February	March	April	May	June	July	August	September	October	November	December:	Totals
2-4 D AMINE			831.3	210.1	625.0	165.0	65.0	65.0	80.0				2041.4
Milestone (gal)				64.0	317.0					128.0			509.0
Milestone (qt)				25.6		521.0							546.6
OutPost 22K			1325.4	240.0	1004.8	48.3	229.7	61.7	47.7		37.7		2995.3
PASTUREGARD				26.7	120.0	53.3			60.8				260.8
TORDON		16.0	320.0	239.0	254.0	245.1				192.0	148.0	346.0	1760.1
TORDON + 2-4 D				7.0	791.0	2050.5							2848.5
Total Acreage		16.0	2476.7	812.4	3111.8	3083.2	294.7	126.7	188.5	320.0	185.7	346.0	10961.7

**Annual Noxious Weed Eradication Progress Report
Treatment Summary for Noxious Weeds**

Douglas County Noxious Weed Dept

2009 ★

Sericea Lespedeza

Enforcement	January	February	March	April	May	June	July	August	September	October	November	December:	Totals
Warning Notice													0
Legal Notice						8	24	6					38
Court Cases													0
Diversion Agreements													0

Acreage Treated	January	February	March	April	May	June	July	August	September	October	November	December:	Totals
City					4.0		4.0						8.0
County								140.0				30.0	170.0
Private CRP					191.9	157.3	47.9	96.9	5.3	26.0			525.3
Private Non-Ag							26.6	10.0					36.6
Private Other						5.3			10.0				15.3
Private Pasture				65.3	343.1	705.5	642.7	534.7	132.3	10.0	21.1		2454.7
State							22.3	79.0					101.3
Township									37.3				37.3
Total Acreage				65.3	539.0	868.1	743.5	860.6	184.9	36.0	21.1	30.0	3348.5

Approved Herbicides and Methods	January	February	March	April	May	June	July	August	September	October	November	December:	Totals
2-4 D AMINE						5.0							5.0
ESCORT							16.0	32.0	48.0	16.0			112.0
PASTUREGARD				50.0	449.6	746.0	529.1	776.7	94.3	20.0	21.1	30.0	2716.8
REMEDY				15.3	73.4	101.1	187.8	41.3	42.6				461.5
REMEDY + 2-4 D					16.0	16.0	10.6	10.6					53.2
Total Acreage				65.3	539.0	868.1	743.5	860.6	184.9	36.0	21.1	30.0	3348.5

Noxious Weed Survey Worksheet
Douglas County Noxious Weed Dept

2009 ★

Field Bindweed	January	February	March	April	May	June	July	August	September	October	November	December:	Totals
City								25					25
Federal							12						12
Private Hay Meadow						3	2	6	1				12
Private Other							6						6
Private Pasture						1		3	3				7
State								12					12
Township								30					30
Total Acreage Infested						4	20	76	4				104
	Total Acreage Infested	Acres Surveyed	County Acres	Estimated Acreage	Weed Director's Adjustment	Acreage After Adjustment	Note						
		6950	419712										
City	25.0			1509.8	106.0	1615.8							
Federal	12.0			724.7	112.9	837.6							
Private Hay Meadow	12.0			724.7	0.0	724.7							
Private Other	6.0			362.3	154.2	516.5							
Private Pasture	7.0			422.7	3.9	426.6							
State	12.0			724.7	87.0	811.7							
Township	30.0			1811.7	279.3	2091.0							
	104.0	Total Estimated Acreage		6280.6	743.3	7023.9							

Noxious Weed Survey Worksheet
Douglas County Noxious Weed Dept

2009 ★

Johnsongrass	January	February	March	April	May	June	July	August	September	October	November	December:	Totals
City								12					12
Federal							7						7
Private Hay Meadow						1	5	4	2				12
Private Pasture								3	2				5
State								6					6
Township								35					35
Total Acreage Infested						1	12	60	4				77

	Total Acreage Infested	Acres Surveyed 6950	County Acres 419712	Estimated Acreage	Weed Director's Adjustment	Acreage After Adjustment	Note
City	12.0			724.7	0.0	724.7	
Federal	7.0			422.7	81.9	504.6	
Private Hay Meadow	12.0			724.7	0.0	724.7	
Private Other				592.2	43.1	635.3	
Private Pasture	5.0			302.0	12.0	314.0	
State	6.0			362.3	0.0	362.3	
Township	35.0			2113.7	69.5	2183.2	
	77.0	Total Estimated Acreage		5242.3	206.5	5448.8	

Noxious Weed Survey Worksheet
Douglas County Noxious Weed Dept

2009 ★

Musk Thistle	January	February	March	April	May	June	July	August	September	October	November	December	Totals
City								19					19
Federal							11						11
Private Hay Meadow						4	3	5	1				13
Private Other							3						3
Private Pasture						2	6	8	6				22
State								13					13
Township								41					41
Total Acreage Infested						6	23	86	7				122

	Total Acreage Infested	Acres Surveyed 6950	County Acres 419712	Estimated Acreage	Weed Director's Adjustment	Acreage After Adjustment	Note
City	19.0			1147.4	13.6	1161.0	
Federal	11.0			664.3	0.0	664.3	
Private Hay Meadow	13.0			785.1	0.0	785.1	
Private Other	3.0			181.2	57.7	238.9	
Private Pasture	22.0			1328.6	63.7	1392.3	
State	13.0			785.1	10.0	795.1	
Township	41.0			2476.0	200.0	2676.0	
	122.0		Total Estimated Acreage	7367.7	345.0	7712.7	

Noxious Weed Survey Worksheet
Douglas County Noxious Weed Dept

2009 ★

Purple Loosestrife	January	February	March	April	May	June	July	August	September	October	November	December	Totals
City								5					5
Total Acreage Infested								5					5
	Total Acreage Infested	Acres Surveyed	County Acres	Estimated Acreage	Weed Director's Adjustment	Acreage After Adjustment	Note						
		6950	419712										
City	5.0			302.0	4.9	306.9							
	5.0	Total Estimated Acreage		302.0	4.9	306.9							

Noxious Weed Survey Worksheet
Douglas County Noxious Weed Dept

2009 ★

Sericea Lespedeza	January	February	March	April	May	June	July	August	September	October	November	December	Totals
City							1	1					2
Private Hay Meadow							7	3	3				13
Private Other							2						2
Private Pasture							4	8	3				15
Private Wooded Area								2					2
State								9					9
Township								26					26
Total Acreage Infested							14	49	6				69

	Total Acreage Infested	Acres Surveyed 6950	County Acres 419712	Estimated Acreage	Weed Director's Adjustment	Acreage After Adjustment	Note
City	2.0			120.8	0.0	120.8	
Private Hay Meadow	13.0			785.1	0.0	785.1	
Private Other	2.0			120.8	6.0	126.8	
Private Pasture	15.0			905.9	33.8	939.7	
Private Wooded Area	2.0			120.8	0.0	120.8	
State	9.0			543.5	33.8	577.3	
Township	26.0			1570.1	6.0	1576.1	
	69.0		Total Estimated Acreage	4167.0	79.6	4246.6	

**Douglas County Noxious Weed Dept
Chemical Disbursement Summary**

2009

Noxious Weed Treatments

Chemical	Rate	Cost Share	Jan	Feb	March	April	May	June	July	Aug	Sept	Oct	Nov	Dec	Totals
Dye	\$0.38	\$0.38				42.00	666.00	176.00	525.00						1409.00 oz
Surfactant	\$0.41	\$0.41				42.00	666.00	188.00	525.00	84.00					1505.00 oz
<hr/>															
2,4-D A4	\$11.70	\$15.00			107.50	105.00	410.00	140.00	47.50	115.00	47.50				972.50 gal
		Total 2-4 D			107.50	105.00	410.00	140.00	47.50	115.00	47.50				972.50 gal
<hr/>															
Gly Star Original	\$23.95	\$24.00				5.00									5.00 gal
Razor	\$23.95	\$24.00					152.50	110.00	95.00	67.50	45.00				470.00 gal
		Total GLYPHOSATE				5.00	152.50	110.00	95.00	67.50	45.00				475.00 gal
<hr/>															
Plateau	\$2.17	\$0.00						48.00		96.00					144.00 oz
		Total IMAZAPIC						48.00		96.00					144.00 oz
<hr/>															
Excort XP	\$6.97	\$17.00							8.00	16.00	24.00	8.00			56.00 oz
		Total METSULFURON METHYL							8.00	16.00	24.00	8.00			56.00 oz
<hr/>															
OutPost 22K	\$55.17	\$47.00			82.84	15.00	62.79	3.19	22.34	7.43	15.85		4.29		213.73 gal
Tordon 22K (1 gal container)	\$78.20	\$65.00		1.00	35.00	14.94	72.88	26.32	0.00	16.00		12.00	8.00	25.63	211.76 gal
		Total PICLORAM		1.00	117.84	29.94	135.67	29.51	22.34	23.43	15.85	12.00	12.29	25.63	425.49 gal
<hr/>															
Remedy	\$59.95	\$51.00			2.00	3.00	18.00	22.00	36.00	10.00	8.00				99.00 gal
		Total TRICLOPYR			2.00	3.00	18.00	22.00	36.00	10.00	8.00				99.00 gal
<hr/>															
PastureGard	\$46.45	\$41.00				15.00	117.50	152.50	120.27	119.39	38.77	5.00	4.17	7.50	580.09 gal
		Total TRICLOPYR + VISTA				15.00	117.50	152.50	120.27	119.39	38.77	5.00	4.17	7.50	580.09 gal
<hr/>															
Milestone (gal)	\$275.80	\$213.00				2.50	12.50					5.00			20.00 gal
Milestone (qt)	\$70.17	\$59.00				4.00		5.00	1.00						10.00 qt
		Total Triisopropanolammonium salt				2.50	12.50					5.00			20.00 gal
		Total Triisopropanolammonium salt				4.00		5.00	1.00						10.00 qt

**Douglas County Noxious Weed Dept
Chemical Disbursement Summary**

2009

Other Treatments

Chemical	Rate	Cost Share	Jan	Feb	March	April	May	June	July	Aug	Sept	Oct	Nov	Dec	Totals
Dye	\$0.38	\$0.38					98.00								98.00 oz
Surfactant	\$0.41	\$0.41				180.00	98.00	60.00							338.00 oz
<hr/>															
2,4-D A4	\$11.70	\$15.00				7.50									7.50 gal
		Total 2-4 D				7.50									7.50 gal
<hr/>															
Gly Star Original	\$23.95	\$24.00				2.50	2.50								5.00 gal
Razor	\$23.95	\$24.00						10.00		57.50					67.50 gal
		Total GLYPHOSATE				2.50	2.50	10.00		57.50					72.50 gal
<hr/>															
Tordon 22K (1 gal container)	\$78.20	\$65.00						0.00							0.00 gal
		Total PICLORAM						0.00							0.00 gal
<hr/>															
PastureGard	\$46.45	\$41.00						0.00							0.00 gal
		Total TRICLOPYR + VISTA						0.00							0.00 gal
<hr/>															
Milestone (gal)	\$275.80	\$213.00				0.00									0.00 gal
		Total Triisopropanolammonium salt				0.00									0.00 gal

Actual Progress Report

Douglas County Noxious Weed Dept

Year
2009

Actual Acreage of Noxious Weeds

Noxious Weed	Private	County	Township	State	Federal	City	Cost Share	Total
Field Bindweed	275	214.8	6.4	177				673.2
Johnsongrass	760		18	28.2375		10		816.2375
Musk Thistle	7704.7592	622.4	694.4	20		1920.1		10961.6592
Sericea Lespedeza	3031.9	170	37.3	101.2625		8		3348.4625
Totals	11771.659	1007.2	756.1	326.5		1938.1		15799.5592

Actual Acreage of Noxious Weed on Private Land sub-section

Noxious Weed	Wheat	Corn	Soybean	Grain	CRP	Pasture	Other	Fallow	Non-Ag	Total
Field Bindweed		80				45	140		10	275
Johnsongrass		20	80		20	60	575		5	760
Musk Thistle					10	7577.3592	105.4		12	7704.7592
Sericea Lespedeza					525.3	2454.7	15.3		36.6	3031.9
Totals		100	80		555.3	10137.059	835.7		63.6	11771.659

Herbicide Disbursement Summary

Chemical	Purchase Price	Cost Share Price	Total Disbursed
2-4 D	\$11.70	\$15.00	972.500 gal
GLYPHOSATE	\$23.95	\$24.00	475.000 gal
IMAZAPIC	\$2.17	\$0.00	144.000 oz
METSULFURON METHYL	\$6.97	\$17.00	56.000 oz
PICLORAM	\$67.96	\$57.00	425.490 gal
TRICLOPYR	\$59.95	\$51.00	99.000 gal
TRICLOPYR + VISTA	\$46.45	\$41.00	580.090 gal
Triisopropanolammonium salt	\$275.80	\$213.00	20.000 gal
Triisopropanolammonium salt	\$70.17	\$59.00	10.000 qt

Douglas County Noxious Weed Dept

DG

Noxious Weed Survey Data Collection

Year

2009

Start Date

End Date

1/1/2009

12/31/2009

Survey#	Date	Surveyor	Field#	Legal Description				
80	8/28/2009	John Landon		County Wide				
Location		Land Ownership		Acreage Surveyed	Acreage Infested	Weed	Acreage Infested	
Co wide		Township		300	132	Field Bindweed	30	
						Johnsongrass	35	
						Musk Thistle	41	
						Sericea Lespedeza	26	
Co wide		City		150	62	Field Bindweed	25	
						Johnsongrass	12	
						Musk Thistle	19	
						Sericea Lespedeza	1	
						Purple Loosestrife	5	
Co wide		State		100	40	Johnsongrass	6	
						Musk Thistle	13	
						Sericea Lespedeza	9	
						Field Bindweed	12	
Total Acreage Surveyed				550	234			

Survey#	Date	Surveyor	Field#	Legal Description				
81	7/16/2009	John Landon	007	11/17/36				
Location		Land Ownership		Acreage Surveyed	Acreage Infested	Weed	Acreage Infested	
NW		Federal RailRoad		20	6	Musk Thistle	2	
						Field Bindweed	2	
						Johnsongrass	2	
NW		Private Soybean		20	0			
NW		Private Hay/Meadow		30	2	Sericea Lespedeza	2	
NW		Private Pasture		20	0			
NW		Private Corn		5	0			
NW		Private Wooded Area		65	0			
SW		Private Pasture		80	2	Sericea Lespedeza	2	
SW		Private Hay/Meadow		40	0			
SW		Private Wooded Area		40	0			
SE		Private Pasture		30	2	Musk Thistle	2	
SE		Private Corn		20	0			
SE		Private Wooded Area		110	0			
NE		Private Pasture		40	1	Sericea Lespedeza	1	
NE		Private Wooded Area		110	0			
NE		Private Corn		10	0			
Total Acreage Surveyed				640	13			

Douglas County Noxious Weed Dept

DG

Noxious Weed Survey Data Collection

Year

2009

Start Date

End Date

1/1/2009

12/31/2009

Survey#	Date	Surveyor	Field#	Legal Description		
82	7/1/2009	John Landon	073	12/19/21		
Location		Land Ownership	Acreage Surveyed	Acreage Infested	Weed	Acreage Infested
NW		Private Hay Meadow	20	1	Johnsongrass	1
NW		Private Pasture	40	3	Musk Thistle	2
					Sericea Lespedeza	1
NW		Private Corn	30	0		
NW		Federal Roads	60	9	Field Bindweed	3
					Musk Thistle	4
					Johnsongrass	2
NW		Private Wooded Area	10	0		
SW		Private Hay Meadow	40	0		
SW		City Utility RAW	30	0		
SW		Private Urban Residential	10	0		
SW		Private Wooded Area	80	0		
SE		Private Urban Residential	20	0		
SE		Private Wooded Area	140	0		
NE		Private Corn	50	0		
NE		Private Soybean	20	0		
NE		Federal Roads	60	9	Field Bindweed	5
					Musk Thistle	3
					Johnsongrass	1
NE		Private Wooded Area	30	0		
Total Acreage Surveyed			640	22		

Survey#	Date	Surveyor	Field#	Legal Description		
83	7/14/2009	John Landon	075	12/19/23		
Location		Land Ownership	Acreage Surveyed	Acreage Infested	Weed	Acreage Infested
NW		Private Residential	40	5	Field Bindweed	2
					Musk Thistle	3
NW		Private Industrial	80	0		
NW		Federal Roads	40	0		
SW		Private Residential	130	0		
SW		Private Wooded Area	30	0		
SE		Private Residential	100	4	Field Bindweed	4
SE		Private Industrial	30	0		
SE		Federal Roads	30	0		
NW		Private Industrial	150	0		
NW		Federal RailRoad	10	6	Field Bindweed	2
					Musk Thistle	2
					Johnsongrass	2
Total Acreage Surveyed			640	15		

Douglas County Noxious Weed Dept

DG

Noxious Weed Survey Data Collection

Year
2009

Start Date End Date
1/1/2009 12/31/2009

Survey#	Date	Surveyor	Field#	Legal Description			
84	8/3/2009	John Landon	103	12/17/36			
Location		Land Ownership	Acreage Surveyed	Acreage Infested	Weed	Acreage Infested	
NW		Private Soybean	120	0			
NW		Private Urban Residential	5	0			
NW		Private Wooded Area	30	0			
NW		Federal Utility R/W	5	0			
SW		Private Urban Residential	5	0			
SW		Private Soybean	20	0			
SW		Federal Utility R/W	20	0			
SW		Private Wooded Area	120	0			
SE		Private Hay Meadow	80	5	Field Bindweed	1	
					Musk Thistle	2	
					Johnsongrass	1	
					Sericea Lespedeza	1	
SE		Private Wooded Area	80	0			
NE		Private Soybean	40	0			
NE		Private Hay Meadow	40	3	Musk Thistle	1	
					Johnsongrass	1	
					Sericea Lespedeza	1	
NE		Federal Utility R/W	20	0			
NE		Private Urban Residential	5	0			
NE		Private Wooded Area	50	0			
Total Acreage Surveyed			640	8			

Survey#	Date	Surveyor	Field#	Legal Description			
85	7/29/2009	John Landon	107	12/18/34			
Location		Land Ownership	Acreage Surveyed	Acreage Infested	Weed	Acreage Infested	
NW		City Utility R/W	20	0			
NW		Private Soybean	60	0			
NW		Private Hay Meadow	20	0			
NW		Private Wooded Area	60	0			
SW		Private Hay Meadow	130	10	Field Bindweed	1	
					Musk Thistle	1	
					Johnsongrass	3	
					Sericea Lespedeza	5	
SW		Private Wooded Area	30	0			
SE		Private Soybean	80	0			
SE		Private Hay Meadow	70	2	Sericea Lespedeza	2	
SE		City Utility R/W	5	0			
SE		Private Urban Residential	5	0			
NE		Private Pasture	70	2	Musk Thistle	2	
NE		Private Hay Meadow	80	4	Field Bindweed	1	
					Musk Thistle	2	
					Johnsongrass	1	
					Sericea Lespedeza	0	
NE		City Utility R/W	10	1	Sericea Lespedeza	1	
Total Acreage Surveyed			640	19			

Douglas County Noxious Weed Dept

DG

Noxious Weed Survey Data Collection

Year

2009

Start Date

1/1/2009

End Date

12/31/2009

Survey#	Date	Surveyor	Field#	Legal Description		
86	6/1/2009	John Landon	314	14/21/07		
Location		Land Ownership	Acreage Surveyed	Acreage Infested	Weed	Acreage Infested
NW		Private Corn	100	0		
NW		Private Soybean	10	0		
NW		Private Hay Meadow	30	7	Musk Thistle	4
					Field Bindweed	2
					Johnsongrass	1
NW		Private Corn	10	0		
NW		Private Urban Residential	10	0		
SW		Private Wooded Area	20			
SW		Private Hay Meadow	60	1	Field Bindweed	1
SW		Private Soybean	10	0		
SW		Private Corn	10	0		
SW		Private Urban Residential	30	0		
SW		Private Pasture	30	3	Musk Thistle	2
					Field Bindweed	1
SE		Private Wooded Area	20	0		
SE		Private Corn	140	0		
NE		Private Corn	40	0		
NE		Private Pasture	10	0		
NE		Private Soybean	50	0		
NE		Private Wheat	20	0		
NE		Private Hay Meadow	20	0		
NE		Private Wooded Area	20	0		
Total Acreage Surveyed			640	11		

Survey#	Date	Surveyor	Field#	Legal Description		
87	8/10/2009	John Landon	325	14/18/13		
Location		Land Ownership	Acreage Surveyed	Acreage Infested	Weed	Acreage Infested
NW		Private Corn	50	0		
NW		City Park	70	0		
NW		Private Wooded Area	40	2	Sericea Lespedeza	2
SW		Private Soybean	130	0		
SW		Private Urban Residential	10	0		
SW		Private Hay Meadow	20	3	Field Bindweed	1
					Musk Thistle	1
					Johnsongrass	1
SE		Private Corn	20	0		
SE		Private Soybean	110	0		
SE		Private Urban Residential	10	0		
SE		Private Wooded Area	20	0		
NE		Private Corn	80	0		
NE		Private Wooded Area	20	0		
NE		Private Grapes	60	0		
Total Acreage Surveyed			640	5		

Douglas County Noxious Weed Dept

DG

Noxious Weed Survey Data Collection

Year
2009

Start Date End Date
1/1/2009 12/31/2009

Survey#	Date	Surveyor	Field#	Legal Description		
88	8/18/2009	John Landon	368	14/18/30		
Location		Land Ownership	Acreage Surveyed	Acreage Infested	Weed	Acreage Infested
NW		Private Pasture	150	8	Field Bindweed	2
					Musk Thistle	3
					Johnsongrass	1
					Sericea Lespedeza	2
NW		Private Wooded Area	10	0		
SW		Private Pasture	110	3	Field Bindweed	1
					Musk Thistle	1
					Johnsongrass	1
SW		Private Corn	20	0		
SW		Private Wooded Area	30	0		
SE		Private Hay Meadow	55	0		
SE		Private Soybean	40	0		
SE		Private Pasture	40	1	Sericea Lespedeza	1
SE		Private Wooded Area	20	0		
SE		Private Urban Residential	5	0		
NE		Private Pasture	110	4	Musk Thistle	2
					Sericea Lespedeza	2
NE		Private Hay Meadow	40	0		
NE		Private Urban Residential	10	0		
Total Acreage Surveyed			640	16		

Survey#	Date	Surveyor	Field#	Legal Description		
89	8/20/2009	John Landon	380	14/20/30		
Location		Land Ownership	Acreage Surveyed	Acreage Infested	Weed	Acreage Infested
NW		Private Soybean	40	0		
NW		Private Pasture	55	3	Musk Thistle	2
					Johnsongrass	1
NW		Private Hay Meadow	55	4	Field Bindweed	2
					Musk Thistle	1
					Sericea Lespedeza	1
NW		Private Urban Residential	5	0		
NW		Private Wooded Area	5	0		
SW		Private Urban Residential	5	0		
SW		Private Pasture	95	3	Sericea Lespedeza	3
SW		Private Hay Meadow	60	0		
SE		Private Urban Residential	20	0		
SE		Private Soybean	70	0		
SE		Private Hay Meadow	50	2	Field Bindweed	2
SE		Private Wooded Area	20	0		
NE		Private Soybean	80	0		
NE		Private Corn	60	0		
NE		Private Hay Meadow	20	1	Johnsongrass	1
Total Acreage Surveyed			640	13		

Douglas County Noxious Weed Dept

DG

Noxious Weed Survey Data Collection

Year
2009

Start Date
1/1/2009

End Date
12/31/2009

Survey#	Date	Surveyor	Field#	Legal Description		
90	9/2/2009	John Landon	395	14/18/34		
Location	Land Ownership	Acreage Surveyed	Acreage Infested	Weed	Acreage Infested	
NW	Private Pasture	160	11	Field Bindweed	3	
				Musk Thistle	4	
				Johnsongrass	2	
				Sericea Lespedeza	2	
SW	Private Hay Meadow	15	1	Johnsongrass	1	
SW	Private Corn	20	0			
SW	Private Soybean	40	0			
SW	Private Wooded Area	20	0			
SW	Private Corn	60	0			
SW	Private Urban Residential	5	0			
SE	Private Soybean	90	0			
SE	Private Urban Residential	5	0			
SE	Private Pasture	30	0			
SE	Private Hay Meadow	25	1	Musk Thistle	1	
SE	Private Wooded Area	10	0			
NE	Private Hay Meadow	80	5	Field Bindweed	1	
				Johnsongrass	1	
				Sericea Lespedeza	3	
NE	Private Pasture	70	3	Musk Thistle	2	
				Sericea Lespedeza	1	
NE	Private Corn	10	0			
		Total Acreage Surveyed	640	21		
		Total Acreage Surveyed	6950	377		

Kansas Retailers' Sales Tax Return

ST-16

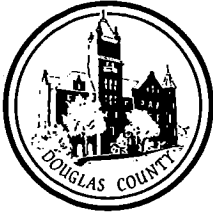
Tax Account Number		FEIN	
Beginning Date 1/1/2009	Ending Date 12/31/2009	Ending Date 1/25/2010	Jurisdiction Code
Business Name and Address Douglas County Noxious Weed Dept 1242 Massachusetts Street Lawrence, KS 66044			

Part I

1. Gross Sales or Receipts	\$91,774.23	
2. Merchandise Consumed		
3. Deductions	\$91,774.23	Rate
4. Net Sales	\$0.00	7.85%
5. Net Tax	\$0.00	
Balance Due	\$0.00	

Part II (Deductions)

E. or 5. Sales of items consumed in the production of tangible personal property produced	\$74,411.71
C. or 3. Sales to U.S. government, state of Kansas, and political subdivisions.	\$17,362.52
Total Deductions	\$91,774.23



DOUGLAS COUNTY PUBLIC WORKS

1242 Massachusetts Street
Lawrence, KS 66044-3350
(785) 832-5293 Fax (785) 841-0943
dgcopubw@douglas-county.com
www.douglas-county.com

Keith A. Browning, P.E.
Director of Public Works/County Engineer

1(c)

MEMORANDUM

To : Board of County Commissioners

From : Keith A. Browning, P.E., Director of Public Works/County Engineer
Mike Perkins, Operations Division Manager *MP*

Date : January 25, 2009

Re : Consent Agenda Approval of Annual Noxious Weed Management Plan

Attached is a copy of the Douglas County Noxious Weed Management Plan. This plan will be sent to the Kansas Department of Agriculture and requires signatures of the Board of County Commissioners.

ACTION: Recommend approval of the plan and signatures of all Board of County Commission members.

**DOUGLAS COUNTY
NOXIOUS WEED
MANAGEMENT PLAN**

PURPOSE:

The Douglas County Noxious Weed Division is part of the Public Works Department with the objective of educating the general public and governing bodies in the control of State declared noxious weeds and the Kansas Noxious Weed Law. The Noxious Weed Division is responsible for eradicating noxious weeds along County maintained highway right-of-ways and other County owned properties; State roads; make available for sale approved herbicides for the treatment of noxious weeds; and enforcement of the Noxious Weed Law.

RESOURCES:

The following resources are available to the Department to accomplish their stated mission:

- Full time Weed Director
- Secretarial duties performed by the Operations Division Secretary
- One full-time Vegetation Management Worker II
- One seasonal laborer during spray season
- Two trucks equipped with mounted chemical sprayers
- Three rental trailers mounted chemical sprayers available to County property owners
- Chemical warehouse with a 5,000 gallon storage capacity, clothes washer and emergency shower and eye wash station
- GPS system
- Digital camera

The automation of the County Appraisers Office has progressed to allow a geographical informational system. The weed department has invested in a simple GPS system to aid in the pinpoint accuracy of infestations, identifying property owners, and eliminating days of processing and mis-identification.

Additional *external* resources available to the department consist of Public Works Road Crews that conduct asphalt maintenance. Both crews are routinely trained in the identification of some noxious weeds. The Weed Director will maintain open communications with the Official County newspaper and local radio station KLWN for public service announcements and informative articles. Contact and joint inspections will be conducted with the Agriculture Agent of the County Extension Office when requested.

PROFESSIONAL DEVELOPMENT:

The Weed Director and Vegetation Maintenance Worker II will maintain chemical applicator certification 9A.

Departmental personnel will attend the Annual Weed Conference and Summer Training Workshop when budgetary funds are available and training agenda's of significant substance are published. Monthly district meetings will be attended when time permits.

Membership in the County Weed Directors Association of Kansas and a professional library will be maintained in the Weed Director's office.

Safety Policy, OSHA requirements and Material Safety Data Sheets of all chemicals used will be kept on file and available to all personnel and customers.

OUTREACH PROGRAMS:

Mass media assets will be used whenever the opportunity arises. During the Douglas County Fair departmental personnel may man an information booth during normal work hours. The weed director will be available to attend City and Township meetings and any public presentation opportunities.

Seed inspections will be conducted for all Co-Op's in the county upon request or complaints. There are no known custom harvesters registered in Douglas County but Custom Harvester Labels will be available in the Weed Department, free of charge.

Douglas County Noxious Weed Department is a participant in the project "Good Neighbor" which is a program created by the Kansas Department of Agriculture in supporting sensitive crop growers. It is a program established to identify, register and provide signage for "Sensitive Crop" growers within Douglas County.

NOXIOUS WEED CONTROL:

The noxious weeds currently present in Douglas County are: Musk Thistle; Canada Thistle; Field Bindweed; Johnson Grass; and Sericea Lespedeza.

The Noxious Weed Division will operate within the bounds of the Kansas Noxious Weed Law K.S.A. Article 13, Chapters 2-1314 thru 2-1333, and the approved Control Methods of the Kansas State Board of Agriculture. Right-of-way programs are attached at Appendixes A – D.

The Noxious Weed Division issues a General Notice to Control Noxious Weeds the first of April that is published in the official County newspaper.

Reminder postcards will be mailed to landowners of known and habitual infestations to announce opportune spray conditions and effective treatments.

Official Warning Notices and Legal Notices will be mailed to landowners and supervising agencies in non-compliance of the weed law based from visual inspections of routine patrolling and citizen complaints. A follow-up inspection/postcard will be mailed to all Official Warning notice recipients to confirm treatment results or identify further eradication needed.

Charges will be filed through the District Attorney's office on individuals who will not respond to written notice or refuse to comply with the weed law.

Approved herbicides will be sold to qualified individuals through the cost share program at a subsidized rate equal to 75% of the total cost incurred by the County in the purchasing, storing, and handling of chemical materials. Prices will be rounded up to the nearest dollar.

To ensure disciplined compliance with the Noxious Weed Law the only limitations on chemical sales will be:

- Glyphosate - - 10 gallons per season
- No sale of Glyphosate till May 15th
- No sale of Tordon 22K from July 1st to September 1st

The Weed Director may approve purchases in excess of the stated limitations after an inspection of reported infestations.

The weed department will maintain a working list of Points of Contact for the control of noxious weeds on township lands, state highways, and all cities within the County boundaries.

We certify that this is a correct copy of the Douglas County 2007 Noxious Weed Management Plan as required by K.S.A. 2-1317.

Nancy Thellman, Chairman, Board of Commissioners

Date

Jim Flory, Commissioner

Date

Mike Gaughan, Commissioner

Date

John Landon, County Noxious Weed Director

Date

APPENDIX A
RIGHT OF WAY PROGRAM
FOR
FIELD BINDWEED

OBJECTIVE: Control field bindweed with the least damage to desirable vegetation at a minimum cost. To achieve this objective, most of the treatment must be accomplished in the fall.

PRIORITIES: 1. Highly traveled visible areas.

METHOD: 1. Map infestations of noxious weeds.

2. Identify sensitive areas.

a. Ornamental planting

b. High water tables

c. Areas subject to high pedestrian traffic

d. Areas where drainage water moves off the property

FALL TREATMENT PROGRAM

OCTOBER 1 – SOIL FREEZE UP

1. Treat areas with 8 – 12 oz of Tordon
2. Treat areas with 3 – 7oz of Milestone

SPRING TREATMENT PROGRAM

JUNE 1 – JULY 1

1. Treat known infestations with 2,4-D and Tordon 22K

SUMMER TREATMENT PROGRAM

JULY 1 – OCTOBER 1

1. Spot treat only if the field bindweed is not under stress, 2,4-D
2. Full spray with Tordon 22K after September 1st
3. Use Escort around grape vineyards and orchards, where you can't spray 2,4-D or Tordon 22K

APPENDIX B

RIGHT OF WAY PROGRAM
FOR
MUSK THISTLE

OBJECTIVE: Control musk thistle with the least damage to desirable vegetation at a minimum cost and prevent the production of viable seed. To achieve this objective, most of the treatment must be accomplished in the fall.

- PRIORITIES: 1. Highly traveled visible areas.
2. An area adjacent to pastures, vacant lots, or waste areas

- METHOD: 1. Map infestations of noxious weeds
2. Identify sensitive areas.
- a. Ornamental planting
- b. High water tables
- c. Areas subject to high pedestrian traffic
- d. Areas where drainage water moves off the property
3. Identify areas where frequent mowing occurs

FALL TREATMENT PROGRAM OCTOBER 1 – SOIL FREEZE UP

1. Treat rural areas with 8 fl oz per acre of Tordon
2. Treat rural areas with 5 fl oz per acre of Milestone

SPRING TREATMENT PROGRAM MARCH 15 – JUNE 30

1. Treat known infestations not treated in the fall with 8 oz. Tordon or 1 to 2 qts. 2,4-D. After bolting use 10 fl oz Tordon 22K + 1 qt. 2,4-D-A.
2. When flowering starts use ½ oz of Escort to kill germination.
3. Check and treat all previously treated areas and spot treat or dig missed rosettes.
4. Precise spot treatment or preferably hand digging for musk thistle found in areas where Crown Vetch is growing.

APPENDIX B

RIGHT OF WAY PROGRAM
FOR
MUSK THISTLE

SUMMER TREATMENT PROGRAM JUNE 1 – OCTOBER 1

1. Frequent mowing in high maintenance areas.
2. Use Escort if flowering
3. Check and treat all previously treated areas and spot treat or dig missed rosettes.

APPENDIX C

RIGHT OF WAY PROGRAM FOR JOHNSON GRASS

OBJECTIVE: Control Johnson Grass with the least damage to desirable vegetation at a minimum cost and prevents the production of viable seed. To achieve this objective, most of the treatment must be accomplished in the **fall**.

PRIORITIES: 1. Highly traveled, visible areas

METHOD: 1. Map infestations of noxious weeds

2. Identify sensitive areas

a. Ornamental planting

b. High water tables

c. Areas subject to high pedestrian traffic

d. Areas where drainage water moves off the property

FALL TREATMENT PROGRAM OCTOBER 1 – SOIL FREEZE UP

1. Spot treat areas with Glyphosate (Roundup) or Plateau,

2. Treat around ornamentals with Glyphosate

SPRING/SUMMER TREATMENT PROGRAM JUNE 1 – OCTOBER 1

1. Spot treat only if the Johnson Grass is not under stress, with Glyphosate (Roundup) at ½ gal per acre or 2 oz per 1 gallon water.

2. Frequent mowing will control Johnson Grass. Mow in the early boot stage of growth.

APPENDIX D

RIGHT OF WAY PROGRAM FOR SERICEA LESPEDEZA

DESCRIPTION: Perennial, stems erect to 5 ft tall, appressed hairy only along the ridges on the stem, leaves with 3 leaflets, leaflets less than 1 inch long and less than ¼ inch wide, wedge-shaped (cuneate), flowers few (1-4) in the axils of the leaves from mid or late July to October, petals yellowish or tinged with purple, about ¼ inch long, fruit (pod) about 1/8 inch long, roundish with pointed ends in outline, flattened.

PREVENTION: Sericea Lespedeza spreads primarily by seeds. Persons planting mixtures of seeds for erosion control and for wildlife habitat should ensure Sericea Lespedeza is not included in the mix.

METHOD: Control of Sericea Lespedeza shall mean preventing production of viable seed.

FALL TREATMENT PROGRAM SEPTEMBER thru NOVEMBER

1. Spot spray with 2 pts. Remedy + 1 qt. 2,4-D
2. Or spot spray with ½ oz Escort
3. PastureGard 1 ½ pts
4. Mowing will help control.

SPRING TREATMENT PROGRAM

1. No treatment
2. Need to wait until all seed have sprouted and growing around May 15th starts

SUMMER TREATMENT PROGRAM JULY thru SEPTEMBER

1. Full spray areas with 2 pts. Remedy + 1 qt. 2,4-D
2. Or ½ oz Escort + 2,4-D
3. PastureGard 1 ½ pts
4. Identify:
 - a. Sensitive areas
 - b. High water tables
 - c. Areas where drainage water moves off the property

1(d)



DOUGLAS COUNTY APPLICATION FOR AN AUTHORIZED EMERGENCY VEHICLE PERMIT

Please type or print the following information:

Check One: New
 Annual Renewal
(If renewal, attach old permit. Must be renewed annually by January 31.)

Name: Louie Disney

Street Address: 895 N2000 Rd Phone # (916) 786-7996

City: Lecompton State: KS Zip Code: 66050 County: Douglas

Make of Vehicle: Chevrolet 1500 Year of Vehicle: 1997

Style of Vehicle: Truck Z71 License Tag #: 5354

VIN #: 2GCEK19R8V1226967 Driver's License #: K02-26-2859

Vehicle Insurance Company Name: Progressive Policy #: 25152970-3
**Attach copy of insurance card.

Agency: Lecompton FIRE/EMS

Agency Address: P.O. Box 154 Lecompton, KS 66905

Agency Head Signature: [Signature] Fire Chief

I HEARBY CERTIFY, I have read and agree to abide by the requirements set forth in Chapter 8 of the Kansas Statutes which relate to the operation of Emergency Vehicles.

I FURTHER CERTIFY, I will drive with due regard for the safety of others as required by K.S.A. 8-1506.

I FURTHER CERTIFY, I will return my permit when requested by the Sheriff. This permit is not transferable to any other person or vehicle.

I FURTHER CERTIFY, violating any of these laws and/or rules and the commission of other serious traffic violations may be grounds for the cancellation of my vehicle being designated as an "Authorized Emergency Vehicle".

[Signature]
Signature of Applicant

[Signature]
Kenneth M. McGovern, Sheriff

1/25/10
Date

1/29/10 006
Date Permit #

Authorization granted by County Commission on this _____ day of _____, 200__.



**DOUGLAS COUNTY
APPLICATION FOR AN AUTHORIZED EMERGENCY VEHICLE PERMIT**

Please type or print the following information:

Check One: New
 Annual Renewal
 (If renewal, attach old permit. **Must be renewed annually by January 31.**)

Name: DUANE D. FILKINS

Street Address: 327 E LINCOLN DR. Phone # (85) 766-5094

City: LAWRENCE State: KA Zip Code: 66049 County: DG.

Make of Vehicle: HONDA CIVIC EX-C Year of Vehicle: 2008

Style of Vehicle: 4-DR License Tag #: KS FF # 613

VIN #: 1HGEA16998L075228 Driver's License #: K02-54-4317

Vehicle Insurance Company Name: AUSTAR Policy #: L10 291480 09/05
 **Attach copy of insurance card.

Agency: KANWAKA FIRE DEPARTMENT

Agency Address: 548 N. 1700 RD. LAWRENCE, MO. 66049

Agency Head Signature: [Signature]

I HERBY CERTIFY, I have read and agree to abide by the requirements set forth in Chapter 8 of the Kansas Statutes which relate to the operation of Emergency Vehicles.

I FURTHER CERTIFY, I will drive with due regard for the safety of others as required by K.S.A. 8-1506.

I FURTHER CERTIFY, I will return my permit when requested by the Sheriff. This permit is not transferable to any other person or vehicle.

I FURTHER CERTIFY, violating any of these laws and/or rules and the commission of other serious traffic violations may be grounds for the cancellation of my vehicle being designated as an "Authorized Emergency Vehicle".

[Signature]
 Signature of Applicant

19-Jan-10
 Date

[Signature]
 Kenneth M. McGovern, Sheriff

1/28/10 007
 Date Permit #

Authorization granted by County Commission on this _____ day of _____, 200_____.



**DOUGLAS COUNTY
APPLICATION FOR AN AUTHORIZED EMERGENCY VEHICLE PERMIT**

Please type or print the following information:

Check One: New
 Annual Renewal
 (If renewal, attach old permit. **Must be renewed annually by January 31.**)

Name: John E Steele Jr

Street Address: 517 N^W 1663 Rd Phone # (785) 766-3541

City: Lawrence State: KS Zip Code: 66049 County: Douglas

Make of Vehicle: Chev Year of Vehicle: 2002

Style of Vehicle: pick up License Tag #: KS FIRE 5436

VIN #: 2GCEK19T421255504 Driver's License #: 511-50-6978

Vehicle Insurance Company Name: Stade Farm Policy #: 242 9386-E11-16K
 **Attach copy of insurance card.

Agency: Kanwaka Fire Dept.

Agency Address: 548 N 1700 Rd Law, KS 66049

Agency Head Signature: [Signature]

I HEARBY CERTIFY, I have read and agree to abide by the requirements set forth in Chapter 8 of the Kansas Statutes which relate to the operation of Emergency Vehicles.

I FURTHER CERTIFY, I will drive with due regard for the safety of others as required by K.S.A. 8-1506.

I FURTHER CERTIFY, I will return my permit when requested by the Sheriff. This permit is not transferable to any other person or vehicle.

I FURTHER CERTIFY, violating any of these laws and/or rules and the commission of other serious traffic violations may be grounds for the cancellation of my vehicle being designated as an "Authorized Emergency Vehicle".

[Signature]
 Signature of Applicant
[Signature]
 Kenneth M. McGovern, Sheriff

1/20/10
 Date
1/28/10 008
 Date Permit #

Authorization granted by County Commission on this _____ day of _____, 200__.



DOUGLAS COUNTY
APPLICATION FOR AN AUTHORIZED EMERGENCY VEHICLE PERMIT

Please type or print the following information:

Check One: [] New
[X] Annual Renewal
(If renewal, attach old permit. Must be renewed annually by January 31.)

Name: John E Steak Jr.

Street Address: 517 N 1663 Rd Phone # (785) 766-3541

City: Lawrence State: KS Zip Code: 66049 County: Douglas

Make of Vehicle: Chevy Year of Vehicle: 2008

Style of Vehicle: Van License Tag #: Pon 651

VIN #: 1GCGG25C381172876 Driver's License #: 511-50-6978

Vehicle Insurance Company Name: State Farm Policy #: 288 1832-E25-161
**Attach copy of insurance card.

Agency: Kanwaka Fire Dept.

Agency Address: 548 N 1700 Rd Lawrence, KS 66049

Agency Head Signature: [Signature]

I HEREBY CERTIFY, I have read and agree to abide by the requirements set forth in Chapter 8 of the Kansas Statutes which relate to the operation of Emergency Vehicles.

I FURTHER CERTIFY, I will drive with due regard for the safety of others as required by K.S.A. 8-1506.

I FURTHER CERTIFY, I will return my permit when requested by the Sheriff. This permit is not transferable to any other person or vehicle.

I FURTHER CERTIFY, violating any of these laws and/or rules and the commission of other serious traffic violations may be grounds for the cancellation of my vehicle being designated as an "Authorized Emergency Vehicle".

[Signature]
Signature of Applicant

1/20/10
Date

Kenneth M. McGovern, Sheriff

1/28/10 009
Date Permit #

Authorization granted by County Commission on this ___ day of ___, 200__.



**DOUGLAS COUNTY
APPLICATION FOR AN AUTHORIZED EMERGENCY VEHICLE PERMIT**

Please type or print the following information:

Check One: New
 Annual Renewal
 (If renewal, attach old permit. **Must be renewed annually by January 31.**)

Name: Dillon Filkins

Street Address: 327 Eisenhower Dr. (NO mail!) Phone # (785) 764-1921
PO Box 3533, Lawrence, KS 66046

City: Lawrence State: KS Zip Code: 66049 County: Douglas

Make of Vehicle: Ford Year of Vehicle: 2002

Style of Vehicle: F-350 License Tag #: 773 AVF

VIN #: 1FTSX31F72ED3368 Driver's License #: KS 1K01-80-4335 CNL B

Vehicle Insurance Company Name: Allied Insurance Policy #: 72-2-2528532
 **Attach copy of insurance card.

Agency: Kanwaka Township Fire Dept

Agency Address: 548 N 1700 Rd Lawrence, KS

Agency Head Signature: [Signature]

I HEARBY CERTIFY, I have read and agree to abide by the requirements set forth in Chapter 8 of the Kansas Statutes which relate to the operation of Emergency Vehicles.

I FURTHER CERTIFY, I will drive with due regard for the safety of others as required by K.S.A. 8-1506.

I FURTHER CERTIFY, I will return my permit when requested by the Sheriff. This permit is not transferable to any other person or vehicle.

I FURTHER CERTIFY, violating any of these laws and/or rules and the commission of other serious traffic violations may be grounds for the cancellation of my vehicle being designated as an "Authorized Emergency Vehicle".

Dillon Filkins
 Signature of Applicant
Kenneth M. McGovern
 Kenneth M. McGovern, Sheriff

20-Jan-2010
 Date
1/28/10 011
 Date Permit #

Authorization granted by County Commission on this _____ day of _____, 200__.



**DOUGLAS COUNTY
APPLICATION FOR AN AUTHORIZED EMERGENCY VEHICLE PERMIT**

Please type or print the following information:

Check One: New
 Annual Renewal
 (If renewal, attach old permit. Must be renewed annually by January 31.)

Name: Joshua A Wood

Street Address: 440 S Elmore Phone # (785) 865-8007

City: Leecompton State: KS Zip Code: 66050 County: DG

Make of Vehicle: Chevy Year of Vehicle: 1999

Style of Vehicle: Silverado 1500 4X4 License Tag #: 5443

VIN #: 2GCEK19T3X1149777 Driver's License #: K01-20-7475

Vehicle Insurance Company Name: Farm Bureau Policy #: 000000007669602
 **Attach copy of insurance card.

Agency: Leecompton FIRE/EMS

Agency Address: P.O. Box 154, Leecompton, KS 66050

Agency Head Signature: [Signature]
Fire Chief

I HEARBY CERTIFY, I have read and agree to abide by the requirements set forth in Chapter 8 of the Kansas Statutes which relate to the operation of Emergency Vehicles.

I FURTHER CERTIFY, I will drive with due regard for the safety of others as required by K.S.A. 8-1506.

I FURTHER CERTIFY, I will return my permit when requested by the Sheriff. This permit is not transferable to any other person or vehicle.

I FURTHER CERTIFY, violating any of these laws and/or rules and the commission of other serious traffic violations may be grounds for the cancellation of my vehicle being designated as an "Authorized Emergency Vehicle".

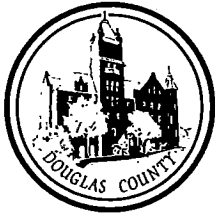
[Signature]
 Signature of Applicant

1/28/10
 Date

[Signature]
 Kenneth M. McGovern, Sheriff

1/29/18 012
 Date Permit #

Authorization granted by County Commission on this _____ day of _____, 200____.
 S:Forms:emergency vehicle permit authorization



DOUGLAS COUNTY PUBLIC WORKS

1242 Massachusetts Street
Lawrence, KS 66044-3350
(785) 832-5293 Fax (785) 841-0943
dgcopubw@douglas-county.com
www.douglas-county.com

Keith A. Browning, P.E.
Director of Public Works/County Engineer

MEMORANDUM

To : Board of County Commissioners

From : Keith A. Browning, P.E., Director of Public Works/County Engineer *KAB*

Date : January 19, 2010

Re : City of Lawrence request for funding for 31st & Kasold improvements

The City of Lawrence requests Douglas County funding assistance in the amount of \$277,715 for improvements at 31st Street and Kasold. The requested amount is the estimated cost for concrete pavement, curb & gutter, fly ash treated subgrade, sidewalk, recreation trail, and sidewalk ramps near the intersection. The improvements are part of the City's project to reconstruct Kasold Drive from Clinton Parkway to 31st Street. The City bases the request on the premise that the intersection serves both the City and unincorporated Douglas County. They propose a right-turn lane for southbound traffic on Kasold at E 1200 Road, and a continuous left-turn lane on 31st Street to serve westbound traffic turning left onto E 1200 Road.

E 1200 Road between K-10 (SLT) and 31st Street is a chip-sealed road maintained by Wakarusa Township. There is narrow, 24'-span, county bridge over Yankee Tank Creek located approximately 0.3 miles south of 31st Street and approximately 725 feet north of K-10. The bridge is posted for a 12-ton load limit. There is an existing at-grade intersection at E 1200 Road/K-10 highway.

Possible improvements to E 1200 Road between K-10 and 31st Street have been studied in the past. Major impediments to such improvements include:

- A wide (approximately 650') floodway for Yankee Tank Creek necessitating a long and expensive bridge
- KDOT plans to remove the at-grade intersection when two additional lanes are added to K-10 (SLT)

Previous study concluded a connection between the 31st & Kasold intersection and Route 458 south of the Wakarusa River, including an overpass at K-10, might be needed in the future. However, this will be an expensive project that could not be justified for many decades. A more cost-effective connection between Route 458 and west Lawrence would be along a Wakarusa Drive alignment. A future Wakarusa Drive extension between K-10 and Route 458 near E 1000 Road ("Banning's Corner"), and a new Wakarusa Drive/K-10 interchange, are both shown in the long-range transportation plan, Transportation 2030. This alignment crosses the Wakarusa River where the floodway is relatively narrow, which is a major advantage over the Kasold alignment. Transportation 2030 does not include a connection between 31st & Kasold and Route 458.

Memorandum
January 19, 2010
Page Two

The City of Lawrence feels Douglas County should assist in paying for proposed auxiliary turn lanes at the 31st & Kasold intersection. This would make sense if Douglas County planned to improve E 1200 Road south of 31st Street. However, for the reasons given above, there is no plan for such an improvement.

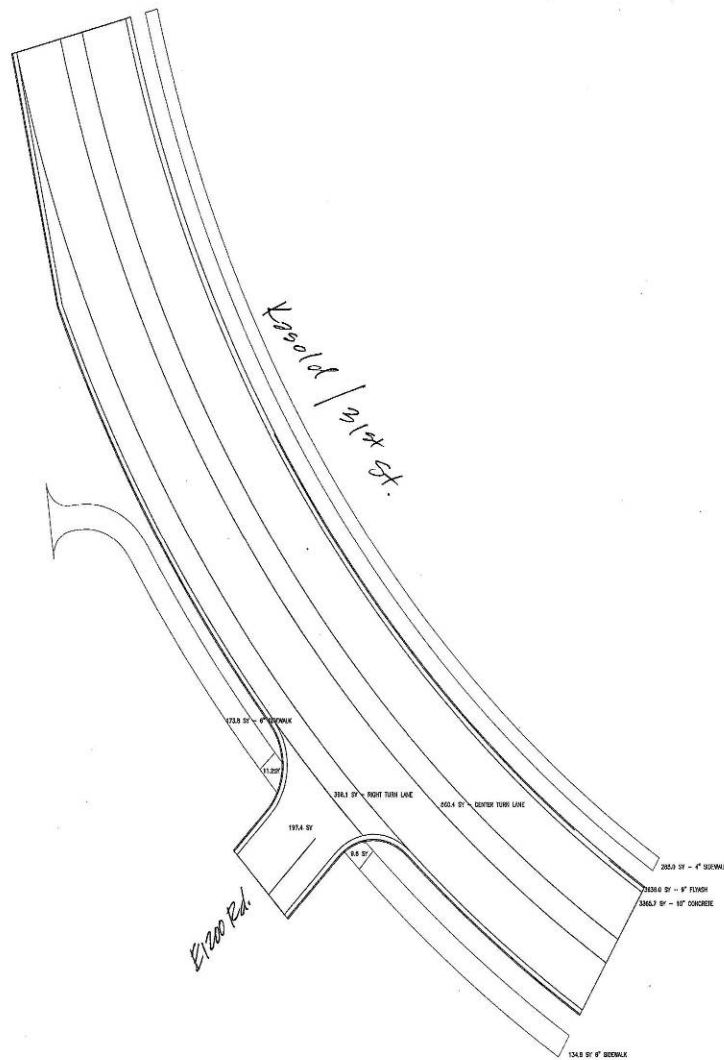
The City of Lawrence has annexed the southeast quadrant of the 31st & Kasold intersection. Proposed development includes a church and multi-family housing. Auxiliary turn lanes on 31st Street and Kasold seem appropriate given such a development. Chuck Soules, Lawrence Public Works Director, indicated the proposed development is not driving the need for turn lanes. Rather, turn lanes on 31st Street at E 1200 Road are warranted given current traffic.

The City of Lawrence has also annexed the entire right-of-way width for E 1200 Road from 31st Street to approximately 100 feet north of the bridge over Yankee Tank Creek. This is approximately 820' north of K-10.

There is precedent for Douglas County partially funding improvements on 31st Street and Kasold Drive. Douglas County participated with the City and KDOT to construct existing 31st Street between the north end of the Kasold curve and Iowa Street (US-59) in the 1980's. Douglas County also participated with the City to construct Clinton Parkway in the late 1970's. Further, Douglas County participated with the City and KTA to replace the Kasold (Route 438) bridge over I-70, which included approach roadway improvements. There is also precedent of Douglas County funding road improvements within the other cities in the county. However, those improvements are on Douglas County routes that travel through those cities.

Given the issues with E 1200 Road cited above, I cannot recommend granting the City's request for funding assistance for improvements at 31st & Kasold.

Action Required: Discuss and consider a City of Lawrence request for funding assistance in the amount of \$277,715 for improvements at 31st Street and Kasold Drive.



Concrete Pavement & Curb & Gutter

The overall quantity of 3365.7 SY for 10" NRDJ along Kasold & 197.4 SY for E 1200 Road at \$60/SY equates to a cost of \$213,786. (The right turn lane by itself has 366.1 SY of concrete pavement, which equates to \$21,966. This cost is included in the overall quantity. The center turn lane by itself has 560.4 SW of concrete pavement, which equates to \$33,624. This cost is included in the overall quantity.)

In terms of Curb & Gutter, there is approximately 1,059 LF of curb & gutter, and at \$18/LF, this equates to a cost of \$19,062.

Fly Ash Treated Subgrade

There is 3636.0 SY of 9" Fly Ash Treated Subgrade in the intersection area and at \$5.00/SY, this equates to \$18,180

Sidewalk/Recreation Trail

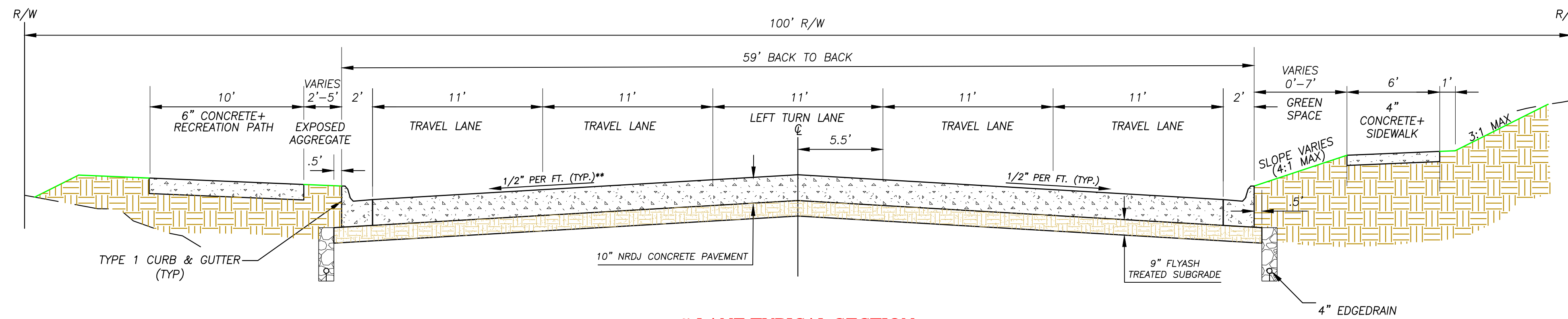
There is 285.0 SY of 4" concrete sidewalk (W=6') at \$35/SY equates to \$9,975.

For the recreation trail, there are 308.6 SY at \$40/SY, which equates to \$12,344.

At the intersection of E 1200 Road and Kasold, there are two sidewalk ramps equally 20.8 SY, and at \$210/SY, this equates to \$4,368.

TOTAL \$277,715

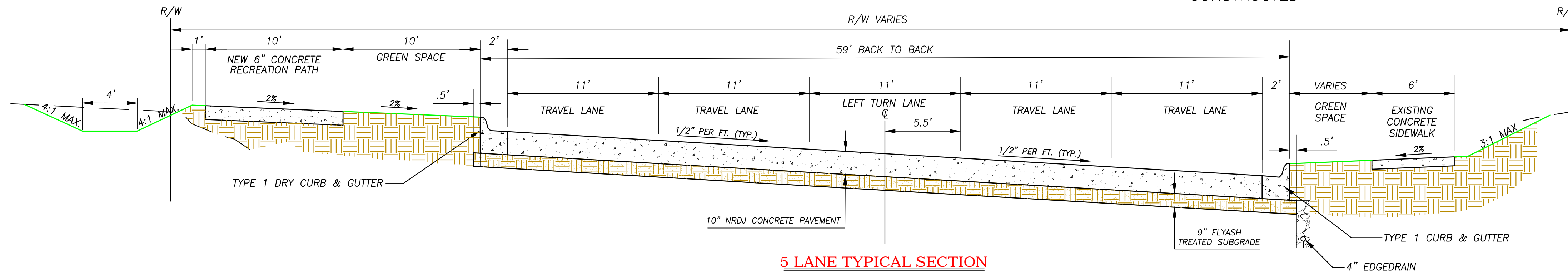
STATE	PROJECT NO.	CITY NO.	YEAR	SHEET NO.	TOTAL SHEETS
KANSAS	023-U-2231-01	PW0903	2009	4	70



5 LANE TYPICAL SECTION
KASOLD DRIVE

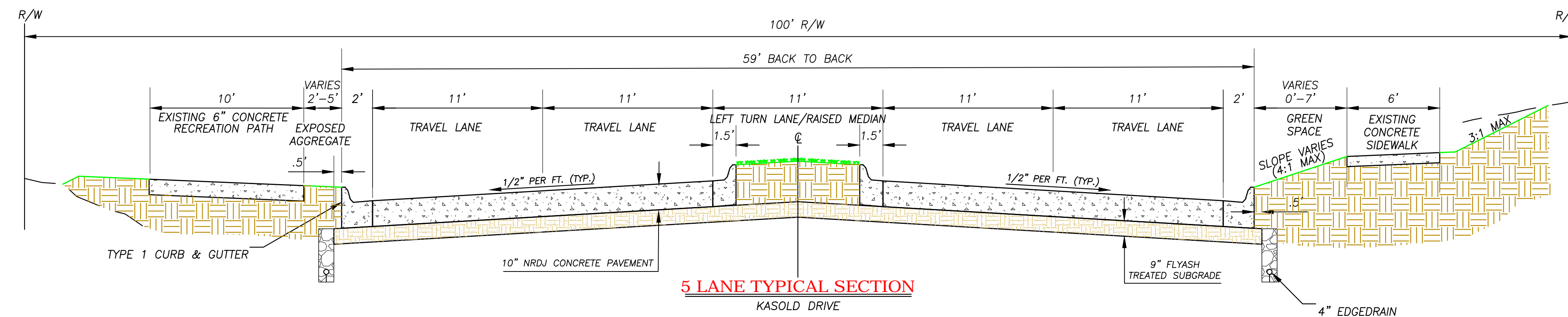
** STA 37+00.00 TO STA 43+25.00 $-1/4"$ PER FT.
STA 50+50.00 TO STA 55+00.00 $-1/4"$ PER FT.

+ SEE PLANS FOR LOCATIONS WHERE NEW
SIDEWALK AND RECREATION PATH SHALL BE
CONSTRUCTED



5 LANE TYPICAL SECTION
STA 5+50.00 TO STA 14+10.00 *

* STA 2+90.00 TO STA 5+50.00 TRANSITION FROM -1.79% TO $+1/2"$ PER FT., LT. SIDE
STA 14+10.00 TO STA 16+60.00 TRANSITION FROM $+1/2"$ PER FT. TO $-1/2"$ PER
FOOT (NORMAL CROWN), LT. SIDE

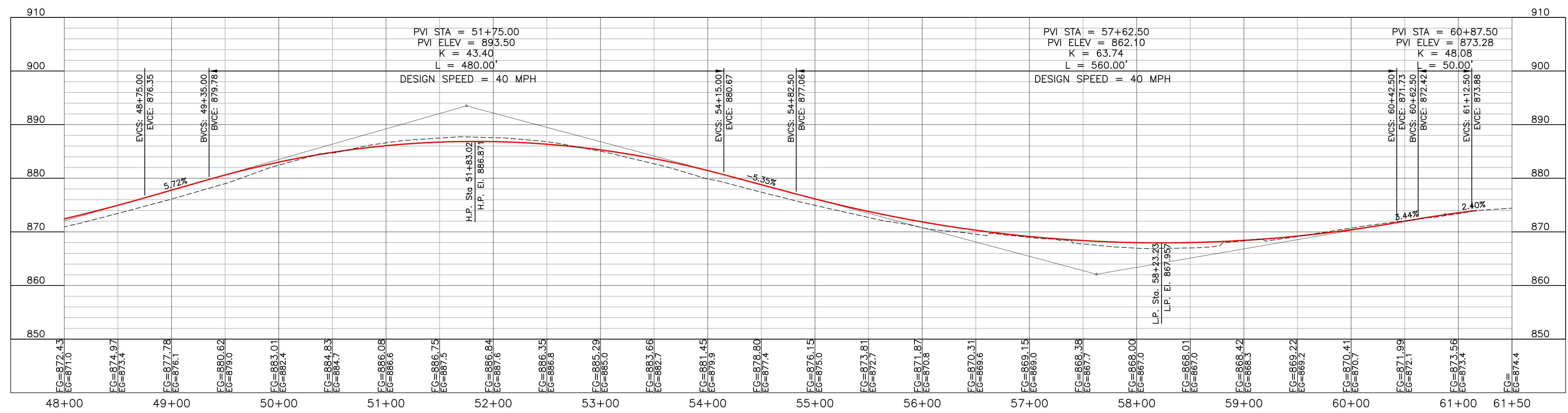
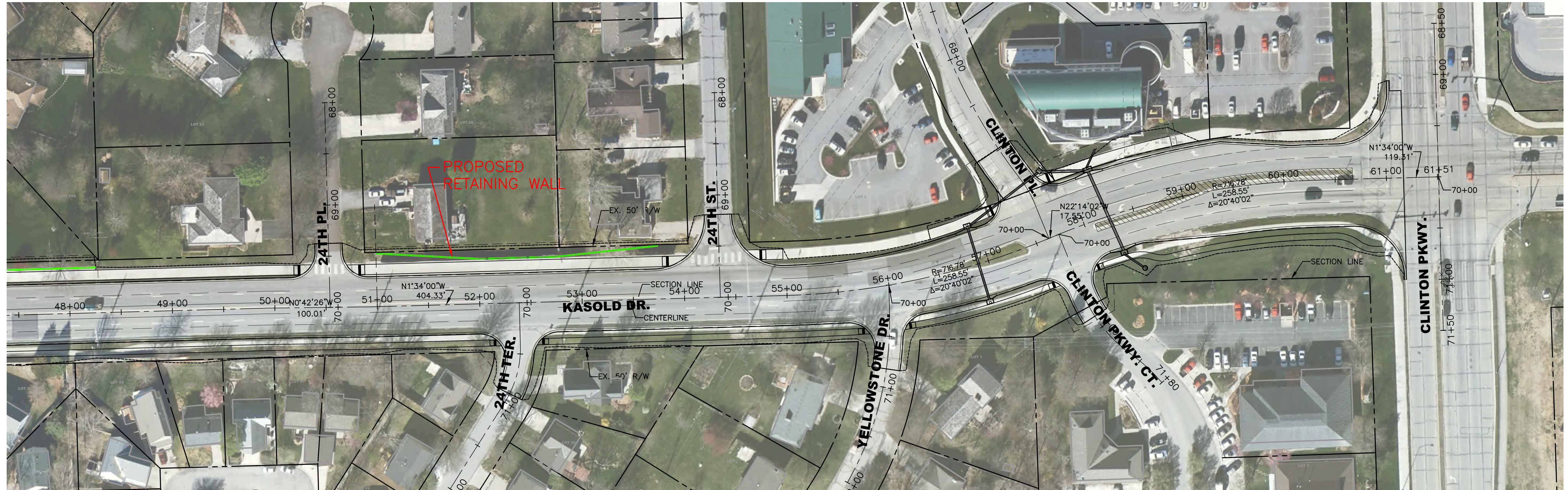


5 LANE TYPICAL SECTION
KASOLD DRIVE

NO.	DATE	REVISION	BY	APP'D
TYPICAL SECTION				
KASOLD DRIVE, 31ST STREET TO CLINTON PARKWAY STREET & STORM SEWER IMPROVEMENTS				
BARTLETT & WEST			DATE: SEPT 2009	W.O.: 16671.001
<small>838 VERMONT - LAWRENCE KS 66044 PH. 785.749.9488 - FAX 785.749.5961 WWW.BARTWEST.COM</small>			4 OF 70	

Drawing name: W:\Proj\16671\16671\AutoCAD\Kasold Drive Plan Set\16671-001_CSD10_Typ=Section_Layout.dwg Layout name: TypicalSection Plotted by: JMD00668 Plotted on: Oct 29, 2009 - 9:54am

STATE	PROJECT NO.	YEAR	SHEET NO.	TOTAL SHEETS
KANSAS	023-U-2231-01	2009	---	70



NO.	DATE	REVISION	BY	APP'D

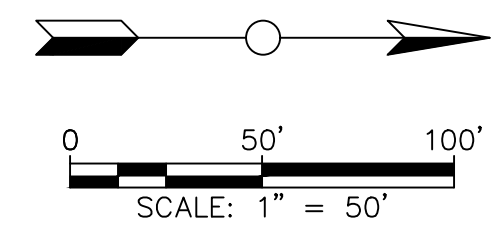
**KASOLD DRIVE
PLAN & PROFILE**

KASOLD DRIVE, 31ST STREET TO CLINTON PARKWAY
STREET & STORM SEWER IMPROVEMENTS

DATE: SEPT 2009
W.O.: 16671.001
--- OF 70

BARTLETT & WEST

628 VERMONT - LAWRENCE KS 66044
PH. 785.749.9452 - FAX 785.749.9961
WWW.BARTWEST.COM



Drawing name: WA_Proj_16000_16671_001_AutoCad_UserTemp & Misc_16671_001_C3D10_Plots.dwg Layout name: CLINTON PKWY Plotted by: JDM00688 Plotted on: Oct 29, 2009 10:36am