

BOARD OF COUNTY COMMISSIONERS OF DOUGLAS COUNTY, KANSAS

WEDNESDAY, JANUARY 29, 2014

4:00 p.m.

-Consider approval of the minutes for December 11, 2013 and January 8, 2014

CONSENT AGENDA

- (1) (a) Consider approval of Commission Orders;
- (b) Consent Agenda Approval of Annual Noxious Weed Eradication Progress Report 2013 (Keith Browning);
- (c) Consent Agenda Approval of Agreement for County Treatment of Noxious Weeds on KDOT Right-of-Way (Keith Browning);
- (d) Consent Agenda Approval of Annual Noxious Weed Management Plan (Keith Browning); and
- (e) Consider approval of Property and Liability Insurance Renewal (Sarah Plinsky)

REGULAR AGENDA

- (2) Annual Sustainability Report and request to transfer the balance of from energy savings projects to the Sustainability & Energy Savings Reinvestment Fund (Eileen Horn, Bill Bell and Sustainability Team Members)

- (3) (a) Consider approval of Accounts Payable (if necessary)
- (b) Appointments
- Food Policy Council**
- (c) Public Comment
- (d) Miscellaneous

- (4) Adjourn

WEDNESDAY, FEBRUARY 5, 2014

-3:00 p.m. Work Study on Fairgrounds Master Plan (Sarah Plinsky)

-4:00 p.m. - Work Study Session on Wind Towers

WEDNESDAY, FEBRUARY 12, 2014 (Light agenda)

WEDNESDAY, FEBRUARY 19, 2014

WEDNESDAY, FEBRUARY 26, 2014

Note: The Douglas County Commission meets regularly on Wednesdays at 4:00 P.M. for administrative items and 6:35 P.M. for public items at the Douglas County Courthouse. Specific regular meeting dates that are not listed above have not been cancelled unless specifically noted on this schedule.

MEMORANDUM

To : Board of Commissioners

From : Keith A. Browning, P.E. Director of Public Works/County Engineer
Doug Stephens, Public Works Operations Division Manager

Date : January 24, 2014

Re : Consent Agenda Approval of Annual Noxious Weed Eradication Progress
Report 2013

Attached is a copy of the Douglas County Noxious Weed Eradication Progress Report for 2013. This report will be sent to the Kansas Department of Agriculture and requires signatures of the Board of County Commissioners.

Action Required: Consent Agenda approval of the 2013 Noxious Weed Eradication Progress Report and signatures of all Board of County Commission members.

Annual Noxious Weed Eradication Progress Report 2013



as required by KSA 2-1316

Douglas County Noxious Weed Dept

Noxious Weed Supervisor:

John Landon

Noxious Weed Department Personnel

Name	Job Title	% Time Spent on Noxious Weeds	Weed Director Salary
John Landon	Noxious Weed Director	100	\$52,793.30
Alan Hollinger	Vegetation Control Specialist II	100	\$39,265.64
Gary Gorden	Vegetation Control Specialist	100	\$28,607.75
Donna Miller	Secretary	50	

Financial Summary - Noxious Weed Fund

Amount

Mil levy for 2013	126482
County valuation for 2013	\$0.00
Beginning Budget Balance for 2013	\$261,725.00

Revenues

Chemical Sales	\$70,585.10
Equip Rentals	\$7,844.64
Labor Reimbursements	\$7,140.64
Total Revenue	\$85,570.38

Expenditures

Commodities - Chemicals	\$95,595.78
Commodities - Other	\$39.99
Contractual Expenses	\$1,498.63
Equipment Supplies	\$181.35
Personnel Expenses	\$132,104.84
Transfer Equip Reserve	\$20,000.00
Total Expenditures	\$249,420.59

Ending Budget Balance \$12,304.41

Carryover to next year's budget for 2013 to 2014 \$0.00

Capital Outlay Fund

Amount

Beginning Balance	\$261,725.00
Receipts	\$0.00
Expenditures	\$249,420.59

Ending Balance \$12,304.41

FYI - this budget is used out of a "General Fund" shared with others. So any revenues received DO NOT go back into a separate budget for Noxious Weed Department. All parts and fuel were paid out of Douglas County "Fleet Budget".

Annual Noxious Weed Eradication Progress Report

Douglas County Noxious Weed Dept

Year
2013 ★

Estimated Acreage of Noxious Weeds

Noxious Weed	Private	County	Township	State	Federal	City	Total
Bull Thistle		226.1					226.1
Field Bindweed	1491.4	462.3	897.5	849.3	499.5	2544.0	6744.0
Johnsongrass	1321.2	572.7	899.5	995.0	577.7	767.6	5133.7
Multiflora Rose	132.7			100.2	751.9		984.8
Musk Thistle	1988.3	699.4	699.4	599.9	100.5	1105.7	5193.2
Purple Loosestrife				221.1		221.1	442.2
Russian Knapweed					88.5		88.5
Sericea Lespedeza	100.2	498.3	496.3	577.7	1261.4		2933.9
Totals	5033.8	2458.8	2992.7	3343.2	3279.5	4638.4	21746.4

Estimated Acreage of Noxious Weed on Private Land sub-section

Noxious Weed	Wheat	Corn	Soybean	Grain	CRP	Pasture	Other	Fallow	Non-Ag	Total
Field Bindweed		90.5	277.4			135.7	49.2			1491.4
Johnsongrass		221.1	275.4			145.7	79.2			1321.2
Multiflora Rose										132.7
Musk Thistle		221.1	265.4			409.6	89.2			1988.3
Sericea Lespedeza										100.2
Totals		532.7	818.2			691.0	217.6			5033.8

Weeds declared Noxious by the County: Multiflora Rose Bull Thistle

Herbicide Disbursement Summary

Chemical	Purchase Price	Cost Share Price	Total Disbursed
2-4 D	\$12.97	\$12.00	1155.000 gal
2-4 D	\$0.23	\$0.00	4160.000 oz
GLYPHOSATE	\$13.26	\$12.00	410.000 gal
IMAZAPIC	\$168.70	\$168.70	136.000 gal
METSULFURON METHYL	\$3.97	\$4.00	168.000 oz
PICLORAM	\$45.94	\$40.00	241.000 gal
TRICLOPYR + 2-4 D	\$83.45	\$69.00	278.000 gal
Triisopropanolammonium salt	\$299.73	\$216.00	80.000 gal
Triisopropanolammonium salt	\$72.91	\$61.00	15.000 qt

Enforcement Summary

Warning Notices	0	Diversion Agreements	0	Demonstration Plots	0
Legal Notices	24	Accounts to Tax Roll	0	Feed and Hay Inspection	0
Court Cases	0	Meetings Sponsored	1	Publish General Notice	1

Enforcement Comments:

We certify this is a correct copy of the Douglas County Noxious Weed Dept Program for 2013

We certify that John Landon is employed as Douglas County Noxious Weed Dept Director for 2014

Chairman, Board of County Commissioners	Date	County Commissioner	Date
County Commissioner	Date	County Commissioner	Date
County Commissioner	Date	County Noxious Weed Director	Date

1/23/14

Noxious Weed Survey Worksheet
Douglas County Noxious Weed Dept

2013 ★

Bull Thistle	January	February	March	April	May	June	July	August	September	October	November	December:	Totals
County										5			5
Total Acreage Infested										5			5

	Total Acreage Infested	Acres Surveyed	County Acres	Estimated Acreage	Weed Director's Adjustment	Acreage After Adjustment	Note
County	5.0	9490	419712	221.1	5.0	226.1	
	5.0	Total Estimated Acreage		221.1	5.0	226.1	

Noxious Weed Survey Worksheet

Douglas County Noxious Weed Dept

2013 ★

Field Bindweed	January	February	March	April	May	June	July	August	September	October	November	December:	Totals
City								3		50			53
County										10			10
Federal										11			11
Private Corn									2				2
Private Hay Meadow								1					1
Private Other								1					1
Private Pasture								2	1				3
Private Railroad									2				2
Private Soybean								1	4	1			6
Private Urban Residential								7	5				12
Private Utility R/W								3					3
Private Wooded Area								2					2
State								1	3	15			19
Township										20			20
Total Acreage Infested								21	17	107			145

	Total Acreage Infested	Acres Surveyed 9490	County Acres 419712	Estimated Acreage	Weed Director's Adjustment	Acreage After Adjustment	Note
				0.0	0.0	0.0	
City	53.0			2344.0	200.0	2544.0	
County	10.0			442.3	20.0	462.3	
Federal	11.0			486.5	13.0	499.5	
Private Corn	2.0			88.5	2.0	90.5	
Private Hay Meadow	1.0			44.2	5.0	49.2	
Private Other	1.0			44.2	5.0	49.2	
Private Pasture	3.0			132.7	3.0	135.7	
Private Railroad	2.0			88.5	7.0	95.5	
Private Soybean	6.0			265.4	12.0	277.4	
Private Urban Residential	12.0			530.7	20.0	550.7	
Private Utility R/W	3.0			132.7	20.0	152.7	
Private Wooded Area	2.0			88.5	2.0	90.5	
State	19.0			840.3	9.0	849.3	
Township	20.0			884.5	13.0	897.5	
	145.0		Total Estimated Acreage	6413.0	331.0	6744.0	

Noxious Weed Survey Worksheet

Douglas County Noxious Weed Dept

2013 ★

Johnsongrass	January	February	March	April	May	June	July	August	September	October	November	December:	Totals
City								4		12			16
County										12			12
Federal									2	10			12
Private Corn									5				5
Private Hay Meadow								1					1
Private Other								1					1
Private Pasture								2	1				3
Private Railroad									2				2
Private Soybean								1	5				6
Private Urban Residential								4	2				6
Private Utility R/W								2					2
Private Wooded Area								1					1
State								1	1	20			22
Township										20			20
Total Acreage Infested								17	18	74			109

	Total Acreage Infested	Acres Surveyed 9490	County Acres 419712	Estimated Acreage	Weed Director's Adjustment	Acreage After Adjustment	Note
City	16.0			707.6	60.0	767.6	
County	12.0			530.7	42.0	572.7	
Federal	12.0			530.7	47.0	577.7	
Private Corn	5.0			221.1	0.0	221.1	
Private Hay Meadow	1.0			44.2	36.0	80.2	
Private Other	1.0			44.2	35.0	79.2	
Private Pasture	3.0			132.7	13.0	145.7	
Private Railroad	2.0			88.5	12.0	100.5	
Private Soybean	6.0			265.4	10.0	275.4	
Private Urban Residential	6.0			265.4	20.0	285.4	
Private Utility R/W	2.0			88.5	1.0	89.5	
Private Wooded Area	1.0			44.2	0.0	44.2	
State	22.0			973.0	22.0	995.0	
Township	20.0			884.5	15.0	899.5	
	109.0		Total Estimated Acreage	4820.7	313.0	5133.7	

Noxious Weed Survey Worksheet
Douglas County Noxious Weed Dept

2013 ★

Multiflora Rose	January	February	March	April	May	June	July	August	September	October	November	December:	Totals
Federal										17			17
Private Urban Residential								1	2				3
State									1				1
Total Acreage Infested								1	3	17			21

	Total Acreage Infested	Acres Surveyed 9490	County Acres 419712	Estimated Acreage	Weed Director's Adjustment	Acreage After Adjustment	Note
Federal	17.0			751.9	0.0	751.9	
Private Urban Residential	3.0			132.7	0.0	132.7	
State	1.0			44.2	56.0	100.2	
	21.0		Total Estimated Acreage	928.8	56.0	984.8	

Noxious Weed Survey Worksheet

Douglas County Noxious Weed Dept

2013 ★

Musk Thistle	January	February	March	April	May	June	July	August	September	October	November	December:	Totals
City								5		20			25
County										15			15
Federal									2				2
Private Corn								2	3				5
Private Hay Meadow								2					2
Private Other								1					1
Private Pasture								4	3				7
Private Railroad									2				2
Private Soybean								2	4				6
Private Urban Residential								8	1				9
Private Utility R/W								5					5
Private Wooded Area								4					4
State								1	2	10			13
Township										15			15
Total Acreage Infested								34	17	60			111

	Total Acreage Infested	Acrees Surveyed 9490	County Acres 419712	Estimated Acreage	Weed Director's Adjustment	Acreage After Adjustment	Note
City	25.0			1105.7	0.0	1105.7	
County	15.0			663.4	36.0	699.4	
Federal	2.0			88.5	12.0	100.5	
Private Corn	5.0			221.1	0.0	221.1	
Private Hay Meadow	2.0			88.5	12.0	100.5	
Private Other	1.0			44.2	45.0	89.2	
Private Pasture	7.0			309.6	100.0	409.6	
Private Railroad	2.0			88.5	7.0	95.5	
Private Soybean	6.0			265.4	0.0	265.4	
Private Urban Residential	9.0			398.0	0.0	398.0	
Private Utility R/W	5.0			221.1	8.0	229.1	
Private Wooded Area	4.0			176.9	3.0	179.9	
State	13.0			574.9	25.0	599.9	
Township	15.0			663.4	36.0	699.4	
	111.0		Total Estimated Acreage	4909.2	284.0	5193.2	

Noxious Weed Survey Worksheet
Douglas County Noxious Weed Dept

2013 ★

Purple Loosestrife	January	February	March	April	May	June	July	August	September	October	November	December:	Totals
City										5			5
State										5			5
Total Acreage Infested										10			10

	Total Acreage Infested	Acres Surveyed 9490	County Acres 419712	Estimated Acreage	Weed Director's Adjustment	Acreage After Adjustment	Note
City	5.0			221.1	0.0	221.1	
State	5.0			221.1	0.0	221.1	
	10.0	Total Estimated Acreage		442.2	0.0	442.2	

Noxious Weed Survey Worksheet
Douglas County Noxious Weed Dept

2013 ★

Russian Knapweed	January	February	March	April	May	June	July	August	September	October	November	December:	Totals
Federal										2			2
Total Acreage Infested										2			2

	Total Acreage Infested	Acres Surveyed 9490	County Acres 419712	Estimated Acreage	Weed Director's Adjustment	Acreage After Adjustment	Note
Federal	2.0			88.5	0.0	88.5	
	2.0	Total Estimated Acreage		88.5	0.0	88.5	

Noxious Weed Survey Worksheet
Douglas County Noxious Weed Dept

2013 ★

Gericea Lespedeza	January	February	March	April	May	June	July	August	September	October	November	December:	Totals
County										10			10
Federal										24			24
Private Urban Residential								1					1
State										12			12
Township										10			10
Total Acreage Infested										1		56	57

	Total Acreage Infested	Acres Surveyed 9490	County Acres 419712	Estimated Acreage	Weed Director's Adjustment	Acreage After Adjustment	Note
County	10.0			442.3	56.0	498.3	
Federal	24.0			1061.4	200.0	1261.4	
Private Urban Residential	1.0			44.2	56.0	100.2	
State	12.0			530.7	47.0	577.7	
Township	10.0			442.3	54.0	496.3	
	57.0	Total Estimated Acreage		2520.9	413.0	2933.9	

**Annual Noxious Weed Eradication Progress Report
Treatment Summary for Noxious Weeds**

**Douglas County Noxious Weed Dept
2013 ★**

Field Bindweed

Enforcement	January	February	March	April	May	June	July	August	September	October	November	December:	Totals
Warning Notice													0
Legal Notice													0
Court Cases													0
Diversion Agreements													0

Acreage Treated	January	February	March	April	May	June	July	August	September	October	November	December:	Totals
County								10.0					10.0
Private							5.0						5.0
Private CRP								6.4					6.4
Private Hay Meadow					25.0	35.0	6.4	20.0					86.4
Private Other						20.0							20.0
Private Pasture					20.0	40.0	90.0	175.0	10.0				335.0
Private Soybean						20.0							20.0
Total Acreage					45.0	115.0	101.4	211.4	10.0				482.8

Approved Herbicides and Methods	January	February	March	April	May	June	July	August	September	October	November	December:	Totals
2-4 D AMINE					20.0	20.0	60.0	150.0	10.0				260.0
Milestone (qt)							6.4	6.4					12.8
ROUNDUP					25.0	95.0	35.0	55.0					210.0
Total Acreage					45.0	115.0	101.4	211.4	10.0				482.8

**Annual Noxious Weed Eradication Progress Report
Treatment Summary for Noxious Weeds**

**Douglas County Noxious Weed Dept
2013 ★**

Johnsongrass

Enforcement	January	February	March	April	May	June	July	August	September	October	November	December:	Totals
Warning Notice													0
Legal Notice													0
Court Cases													0
Diversion Agreements													0

Acreage Treated	January	February	March	April	May	June	July	August	September	October	November	December:	Totals
City								10.0					10.0
Federal								40.0	10.0				50.0
Private Corn							5.0						5.0
Private CRP					15.0								15.0
Private Hay Meadow					35.0	55.0	45.0	50.0	5.0				190.0
Private Pasture					95.0	90.0	60.0	25.0	30.0		10.0		310.0
Private Soybean					5.0	10.0							15.0
State													
Township				16.0		6.0	396.0	12.0		8.0			438.0
Total Acreage				16.0	150.0	161.0	506.0	137.0	45.0	8.0	10.0		1033.0

Approved Herbicides and Methods	January	February	March	April	May	June	July	August	September	October	November	December:	Totals
Outrider								22.0		8.0			30.0
PLATEAU				16.0			396.0						412.0
ROUNDUP					150.0	161.0	110.0	115.0	45.0		10.0		591.0
Total Acreage				16.0	150.0	161.0	506.0	137.0	45.0	8.0	10.0		1033.0

**Annual Noxious Weed Eradication Progress Report
Treatment Summary for Noxious Weeds**

**Douglas County Noxious Weed Dept
2013 ★**

Musk Thistle

Enforcement	January	February	March	April	May	June	July	August	September	October	November	December:	Totals
Warning Notice													0
Legal Notice													0
Court Cases													0
Diversion Agreements													0

Acreage Treated	January	February	March	April	May	June	July	August	September	October	November	December:	Totals
City							26.0						26.0
County							256.0					464.0	720.0
Federal								40.0	25.6				65.6
Private					52.0								52.0
Private Hay Meadow	96.0			60.0	120.0	140.0	50.0	10.0		52.0			528.0
Private Non-Ag							1.0	10.0			29569.8		29580.8
Private Pasture	688.0		72.0	1205.6	2176.0	1048.4	429.6	864.0	906.1	373.3	70.0		7833.0
State							145.0						145.0
Township						14.0	50.0						64.0
Total Acreage	784.0		72.0	1265.6	2348.0	1202.4	957.6	924.0	931.7	425.3	29639.8	464.0	39014.4

Approved Herbicides and Methods	January	February	March	April	May	June	July	August	September	October	November	December:	Totals
2-4 D AMINE			40.0	600.0	620.0	670.0	390.0	860.0	10.0	100.0	70.0		3360.0
ESCORT							16.0						16.0
ESCORT + 2-4 D						64.0							64.0
Hardball						14.0	222.0						236.0
Milestone (gal)				64.0			256.0	64.0	896.1	256.0	29569.8	384.0	31489.9
Milestone (qt)				25.6		25.6	6.4		25.6				83.2
TORDON	784.0		32.0	288.0	368.0	108.8	41.6			69.3		80.0	1771.7
TORDON + 2-4 D				288.0	1360.0	320.0	25.6						1993.6
Total Acreage	784.0		72.0	1265.6	2348.0	1202.4	957.6	924.0	931.7	425.3	29639.8	464.0	39014.4

**Annual Noxious Weed Eradication Progress Report
Treatment Summary for Noxious Weeds**

**Douglas County Noxious Weed Dept
2013 ★**

Sericea Lespedeza

Enforcement	January	February	March	April	May	June	July	August	September	October	November	December:	Totals
Warning Notice													0
Legal Notice													0
Court Cases													0
Diversion Agreements													0

Acreage Treated	January	February	March	April	May	June	July	August	September	October	November	December:	Totals
City													
Federal									112.0				112.0
Private CRP					8.0	24.0	56.0	72.0	48.0				208.0
Private Hay Meadow					296.0	9.0	88.0	96.0	32.0				521.0
Private Pasture	64.0			80.0	128.0	682.0	381.0	338.0	72.0	32.0	96.0		1873.0
State													
Township													
Total Acreage	64.0			80.0	432.0	715.0	525.0	506.0	264.0	32.0	96.0		2714.0

Approved Herbicides and Methods	January	February	March	April	May	June	July	August	September	October	November	December:	Totals
2-4 D'AMINE							5.0						5.0
ESCORT						64.0		32.0	128.0	32.0			256.0
PASTUREGARD					96.0	26.0		2.0					124.0
PASTUREGARD HL	64.0			80.0	336.0	625.0	520.0	472.0	136.0		96.0		2329.0
Total Acreage	64.0			80.0	432.0	715.0	525.0	506.0	264.0	32.0	96.0		2714.0

MEMORANDUM

To : Board of Commissioners

From : Keith A. Browning, P.E. Director of Public Works/County Engineer

Date : January 24, 2014

Re : Consent Agenda Approval of Agreement for County Treatment of Noxious Weeds on KDOT Right-of-Way

Attached is a proposed agreement between Douglas County and KDOT for the treatment of noxious weeds on State road rights-of-way in 2014. Under terms of the agreement, Douglas County treats noxious weeds and invoices KDOT for the wholesale cost of chemicals, plus labor and equipment hourly costs as shown in the agreement.

This department treated noxious weeds on State rights-of-way during 2013 under a similar agreement. We took into account treatment of noxious weeds on State rights-of-way during preparation and approval of the 2014 Noxious Weed budget within the General Fund.

Action Required: Consent Agenda approval of agreement with KDOT for the treatment of noxious weeds on state rights-of-way in 2014.

MEMORANDUM

To : Board of County Commissioners

From : Keith A. Browning, P.E., Director of Public Works/County Engineer
Doug Stephens, Operations Division Manager

Date : January 23, 2014

Re : Consent Agenda Approval of Annual Noxious Weed Management Plan

Attached is a copy of the 2014 Douglas County Noxious Weed Management Plan. This plan will be sent to the Kansas Department of Agriculture and requires signatures of the Board of County Commissioners.

ACTION: Recommend approval of the plan and signatures of all Board of County Commission members.

**DOUGLAS COUNTY
NOXIOUS WEED
MANAGEMENT PLAN**

PURPOSE:

The Douglas County Noxious Weed Division is part of the Public Works Department with the objective of educating the general public and governing bodies in the control of State declared noxious weeds and the Kansas Noxious Weed Law. The Noxious Weed Division is responsible for eradicating noxious weeds along County maintained highway right-of-ways and other County owned properties; State roads; make available for sale approved herbicides for the treatment of noxious weeds; and enforcement of the Noxious Weed Law.

RESOURCES:

The following resources are available to the Department to accomplish their stated mission:

Chemical Sales –

Hours of Operations: Monday thru Friday 7:00 am to 3:30 pm

Full time Weed Director

Administrative duties performed by the Operations Division Secretary

Three full-time Vegetation Management Worker II

One seasonal laborer during spray season

Additional licensed applicators (1)

Three trucks equipped with mounted chemical sprayers

One John Deer Gator with a 30 gallon sprayer

Three rental trailers mounted chemical sprayers available to County property owners

Chemical warehouse with a 2,000 gallon storage capacity, eye wash station

Digital camera

AVL tracking on all spray equipment

The automation of the County Appraisers Office has progressed to allow a geographical informational system. The weed department has invested in a GPS system to aid in the pinpoint accuracy of infestations, identifying property owners, and eliminating days of processing and misidentification.

Additional *external* resources available to the department consist of Public Works Road Crews that conduct asphalt maintenance. Both crews are routinely trained in the identification of some noxious weeds. The Weed Director will maintain open communications with the Official County newspaper and local radio station KLWN for public service announcements and informative articles. Contact and joint inspections will be conducted with the Agriculture Agent of the County Extension Office when requested.

PROFESSIONAL DEVELOPMENT:

The Weed Director and Vegetation Maintenance Worker II will maintain chemical applicator certification 9A.

Departmental personnel will attend the Annual Weed Conference and Summer Training Workshop when budgetary funds are available and training agenda's of significant substance are published. Monthly district meetings will be attended when time permits.

Membership in the County Weed Directors Association of Kansas and a professional library will be maintained in the Weed Director's office.

Safety Policy, OSHA requirements and Material Safety Data Sheets of all chemicals used will be kept on file and available to all personnel and customers.

OUTREACH PROGRAMS:

Mass media assets will be used whenever the opportunity arises. During the Douglas County Fair departmental personnel may man an information booth during normal work hours. The weed director will be available to attend City and Township meetings and any public presentation opportunities.

Seed inspections will be conducted for all Co-Op's in the county upon request or complaints. There are no known custom harvesters registered in Douglas County but Custom Harvester Labels will be available in the Weed Department, free of charge.

Douglas County Noxious Weed Department is a participant in the project "Good Neighbor" which is a program created by the Kansas Department of Agriculture in supporting sensitive crop growers. It is a program established to identify, register and provide signage for "Sensitive Crop" growers within Douglas County.

Douglas County contract sprays for the following Government entities within the County: Eudora Township, City of Eudora, Palmyra Township, Lecompton Township, Kaw Drainage District, and Kansas Department of Transportation (KDOT).

NOXIOUS WEED CONTROL:

The noxious weeds currently present in Douglas County are: Musk Thistle; Canada Thistle; Field Bindweed; Johnson Grass; Sericea Lespedeza, and a small amount of Multiflora Rose .

The Noxious Weed Division will operate within the bounds of the Kansas Noxious Weed Law K.S.A. Article 13, Chapters 2-1314 thru 2-1333, and the approved Control Methods of the Kansas State Board of Agriculture. Right-of-way programs are attached at Appendixes A – D.

The Noxious Weed Division issues a General Notice to Control Noxious Weeds the first of April that is published in the official County newspaper.

Reminder postcards will be mailed to landowners of known and habitual infestations to announce opportune spray conditions and effective treatments.

Official Warning Notices and Legal Notices will be mailed to landowners and supervising agencies in non-compliance of the weed law based from visual inspections of routine patrolling and citizen complaints. A follow-up inspection/postcard will be mailed to all Official Warning notice recipients to confirm treatment results or identify further eradication needed.

Charges will be filed through the District Attorney's office on individuals who will not respond to written notice or refuse to comply with the weed law.

Approved herbicides will be sold to qualified individuals through the cost share program at a subsidized rate equal to 75% of the total cost incurred by the County in the purchasing, storing, and handling of chemical materials. Prices will be rounded up to the nearest dollar.

To ensure disciplined compliance with the Noxious Weed Law the only limitations on chemical sales will be:

- No sale of Glyphosate till May 15th
- Glyphosate - - 10 gallons per season
- No sale of Tordon 22K from July 1st to September 1st
- Chemical sales shall be suspended from December 1st through March 1st

The Weed Director may approve purchases in excess of the stated limitations after an inspection of reported infestations.

The weed department will maintain a working list of Points of Contact for the control of noxious weeds on township lands, state highways, and all cities within the County boundaries.

We certify that this is a correct copy of the Douglas County 2014 Noxious Weed Management Plan as required by K.S.A. 2-1317.

Nancy Thellman, Chairman, Board of Commissioners

Date

Mike Gaughan, Commissioner

Date

Jim Flory, Commissioner

Date

John Landon, County Noxious Weed Director

Date

APPENDIX A
RIGHT OF WAY PROGRAM
FOR
FIELD BINDWEED

OBJECTIVE: Control field bindweed with the least damage to desirable vegetation at a minimum cost.

PRIORITIES: 1. Highly traveled visible areas.

METHOD: 1. Map infestations of noxious weeds.

2. Identify sensitive areas.

a. Ornamental planting

b. High water tables

c. Areas subject to high pedestrian traffic

d. Areas where drainage water moves off the property

FALL TREATMENT PROGRAM OCTOBER 1 – SOIL FREEZE UP

1. Treat areas with 8 – 12 oz of Tordon

2. Treat areas with 3 – 7oz of Milestone

SPRING TREATMENT PROGRAM JUNE 1 – JULY 1

1. Treat known infestations with 2,4-D and Tordon 22K

SUMMER TREATMENT PROGRAM JULY 1 – OCTOBER 1

1. Spot treat only if the field bindweed is not under stress, 2,4-D

2. Full spray with Tordon 22K after September 1st

3. Use Escort around grape vineyards and orchards, where you can't spray 2,4-D or Tordon 22K

APPENDIX B
RIGHT OF WAY PROGRAM
FOR
MUSK THISTLE

OBJECTIVE: Control musk thistle with the least damage to desirable vegetation at a minimum cost and prevent the production of viable seed..

- PRIORITIES: 1. Highly traveled visible areas.
2. An area adjacent to pastures, vacant lots, or waste areas

- METHOD: 1. Map infestations of noxious weeds
2. Identify sensitive areas.
- a. Ornamental planting
 - b. High water tables
 - c. Areas subject to high pedestrian traffic
 - d. Areas where drainage water moves off the property
3. Identify areas where frequent mowing occurs

FALL TREATMENT PROGRAM OCTOBER 1 – SOIL FREEZE UP

1. Treat rural areas with 8 fl oz per acre of Tordon
2. Treat rural areas with 5 fl oz per acre of Milestone

SPRING TREATMENT PROGRAM MARCH 15 – JUNE 30

1. Treat known infestations not treated in the fall with 8 oz. Tordon or 1 to 2 qts. 2,4-D. After bolting use 10 fl oz Tordon 22K + 1 qt. 2,4-D-A.
2. When flowering starts use ½ oz of Escort to kill germination.
3. Check and treat all previously treated areas and spot treat or dig missed rosettes.
4. Precise spot treatment or preferably hand digging for musk thistle found in areas where Crown Vetch is growing.

APPENDIX B

RIGHT OF WAY PROGRAM
FOR
MUSK THISTLE

SUMMER TREATMENT PROGRAM JUNE 1 – OCTOBER 1

1. Frequent mowing in high maintenance areas.
2. Use Escort if flowering
3. Check and treat all previously treated areas and spot treat or dig missed rosettes.

APPENDIX C
RIGHT OF WAY PROGRAM
FOR
JOHNSON GRASS

OBJECTIVE: Control Johnson Grass with the least damage to desirable vegetation at a minimum cost and prevents the production of viable seed.

PRIORITIES: 1. Highly traveled, visible areas

METHOD: 1. Map infestations of noxious weeds

2. Identify sensitive areas

a. Ornamental planting

b. High water tables

c. Areas subject to high pedestrian traffic

d. Areas where drainage water moves off the property

FALL TREATMENT PROGRAM OCTOBER 1 – SOIL FREEZE UP

1. Spot treat areas with Glyphosate (Roundup) or Plateau,

2. Treat around ornamentals with Glyphosate

SPRING/SUMMER TREATMENT PROGRAM JUNE 1 – OCTOBER 1

1. Spot treat only if the Johnson Grass is not under stress, with Glyphosate (Roundup) at ½ gal per acre or 2 oz per 1 gallon water.

2. Frequent mowing will control Johnson Grass. Mow in the early boot stage of growth.

APPENDIX D

RIGHT OF WAY PROGRAM FOR SERICEA LESPEDEZA

DESCRIPTION: Perennial, stems erect to 5 ft tall, appressed hairy only along the ridges on the stem, leaves with 3 leaflets, leaflets less than 1 inch long and less than ¼ inch wide, wedge-shaped (cuneate), flowers few (1-4) in the axils of the leaves from mid or late July to October, petals yellowish or tinged with purple, about ¼ inch long, fruit (pod) about 1/8 inch long, roundish with pointed ends in outline, flattened.

PREVENTION: Sericea Lespedeza spreads primarily by seeds. Persons planting mixtures of seeds for erosion control and for wildlife habitat should ensure Sericea Lespedeza is not included in the mix.

METHOD: Control of Sericea Lespedeza shall mean preventing production of viable seed.

FALL TREATMENT PROGRAM SEPTEMBER thru NOVEMBER

1. Spot spray with 2 pts. Remedy + 1 qt. 2,4-D
2. Or spot spray with ½ oz Escort
3. PastureGard 1 ½ pts
4. Mowing will help control.

SPRING TREATMENT PROGRAM

1. No treatment
2. Need to wait until all seed have sprouted and growing around May 15th starts

SUMMER TREATMENT PROGRAM JULY thru SEPTEMBER

1. Full spray areas with 2 pts. Remedy + 1 qt. 2,4-D
2. Or ½ oz Escort + 2,4-D
3. PastureGard 1 ½ pts
4. Identify:
 - a. Sensitive areas
 - b. High water tables
 - c. Areas where drainage water moves off the property



DOUGLAS COUNTY ADMINISTRATIVE SERVICES

Douglas County Courthouse
1100 Massachusetts Street, Unit 204
Lawrence, KS 66044-3064
(785) 832-5329 Fax (785) 832-5320
www.douglas-county.com

Sarah Plinsky
Assistant County Administrator

MEMO TO: Board of County Commissioners

FROM: Sarah Plinsky, Assistant County Administrator

SUBJECT: Property and Liability Insurance Renewal

DATE: January 24, 2014

Douglas County's General Property and Liability Insurance coverage expires on February 1st. I have been in conversation with our broker, Willis, and the proposals were finalized on January 23rd. In 2012, our broker arranged for us to entertain multiple proposals. For 2013 and 2014, we were able to meet with our current carrier on our coverage and the state of the market, and secure an informal commitment for a 5% increase.

This package includes property, crime, Inland Marine, General Liability, Employee Benefits Liability, Law Enforcement Liability, Public Management Liability, Employment Practice Liability, Business Auto coverage. Machinery and Equipment Breakdown coverage is from a separate company, but included in the bundled pricing. This doesn't include liability coverage for first responders, which staff is still in the process of developing.

Our rate for 2014 will be \$523,887, which is a 7.3% increase over last year. The valuation of our assets increased 2.4% and the market increase represents the remaining 4.9% increase. The market is still experiencing increases over last year. The largest portion of our increase in asset valuation is in the Law Enforcement Liability Coverage. Staff is working with Willis and Travelers to ensure that our coverage and amounts are correct. This may lead to a decrease in the premium amount. This item is paid out of the Administrative Services budget, and there is sufficient budget authority at this time to finance the expense.

Travelers provides the County with excellent customer service and we have had a great relationship with them. Both Willis and I recommended renewal of the coverage with Travelers. I have full copies of the proposal available for review. Please let me know if you have any questions or concerns.

Recommended Motion: Authorize the Assistant County Administrator to sign an agreement with Travelers for General Property and Liability Insurance coverage in an amount not to exceed \$523,887.



DOUGLAS COUNTY ADMINISTRATION

1100 Massachusetts Street
 Lawrence, KS 66044-3064
 (785) 832-5873 Fax (785) 832-5148
 ehorn@douglas-county.com

Eileen Horn
 Sustainability Coordinator

MEMO TO: Craig Weinaug, County Administrator
 Sarah Plinsky, Assistant County Administrator

FROM: Eileen Horn, Sustainability Coordinator

SUBJECT: **Sustainability & Energy Savings Reinvestment Fund: Replenishment Schedule 2013**

DATE: December 30, 2013

The Sustainability & Energy Savings Reinvestment Fund (SESRF) was initiated in November 2011, and over the course of the past 2 years, has been utilized to fund eleven energy efficiency projects in Douglas County facilities. *Per the adopted guidelines for the SESRF:*

Fund Repayment: Reports of the Fund status and recommended Fund replenishment/repayment amounts will be provided by the Sustainability Coordinator to the County Commission on an annual basis. The replenishment amounts will be calculated based upon the energy savings achieved through projects funded by the Sustainability and Energy-Savings Reinvestment Fund.

The following eleven projects have been funded through the SESRF. The Lonestar Marina and Courthouse Controls Upgrade both midway through 2013 and are prorated to reflect their project start dates.

Project Name:	Amount					2013: Recommended amount to re-seed fund:
	Total Project Cost:	Requested From Fund:	Anticipated Annual Savings:	Anticipated Payback Period:	Fund Balance:	
\$301,783.24						
Plumbing Extension for YS Solar Thermal	\$9,196.19	\$9,196.19	n/a	n/a	\$292,587.05	n/a
County Clerk: Epoll Books	\$31,612.00	\$16,625.00	\$220.00	75.6	\$273,410.55	\$220.00
Health Dept. LED lighting	\$4,230.00	\$2,116.50	\$892.00	2.4	\$271,294.05	\$892.00
Building 21 Lighting Retrofit	\$2,552.10	\$2,551.50	\$1,825.62	1.4	\$290,035.55	730.248
KSU Extension Office Lighting Retro	\$1,310.92	\$1,310.92	\$596.37	2.2	\$269,983.13	\$596.37
Hybrid vehicle for Youth Services	\$7,871.00	\$7,871.00	\$1,150.00	6.8	\$262,112.13	\$1,150.00
Recycling bins at Fairgrounds Buildings	\$2,459.31	\$2,459.31	n/a	n/a	\$259,652.82	n/a
Exterior & parking lot lighting retrofit	15,689.00	12,713.24	\$3,587.65	3.5	\$246,939.58	\$3,587.65
United Way Boiler Retrofit	\$50,174.00	\$21,849.00	\$3,400.00	6.4	\$225,090.58	\$3,400.00
Lonestar Marina 20 SEER heat pump	\$14,700.00	\$5,000.00	\$500.00	10.0	\$220,090.58	\$250.00
Courthouse Controls Upgrade	\$155,000.00	\$53,800.00	\$11,000.00	4.9	\$166,290.58	\$5,500.00
\$16,326.27						

Staff recommendation: It is recommended that **\$16,326** (annual cost savings from energy efficiency projects) be transferred from end-of-year fund balance to the SESRF within equipment reserve. This will ensure that the SESRF can continue to provide a predictable and ongoing reserve of funding for sustainability and energy improvement projects in Douglas County facilities.

2013 Progress Report: Sustainability Initiatives

Provided by:

Eileen Horn, Sustainability Coordinator

Bill Bell, Maintenance Director

Douglas County Sustainability Team

Douglas County Sustainability Goals

Douglas County will:



operations

- incorporate sustainable landscaping practices.
- continue to implement an organization-wide document management system to reduce paper waste.
- **reduce waste (priority order: reduce consumption, reuse existing equipment, recycle or buy recycled products)**
- incorporate sustainable practices into road operations.
- be more efficient with fuel consumption.



buildings

- **reduce energy consumption by 30% by 2015.** (2009 baseline)
- **strive to meet LEED standards for certification in new County buildings.**



employees

- create and deliver a sustainability employee education and action campaign.
- **encourage sustainability as a routine and normal practice for Douglas County employees.**



policies

- adopt policy to articulate that sustainability is a valued position.



community

- provide services to citizens in their homes when appropriate (i.e. online services).
- **facilitate community understanding of sustainability practices.**

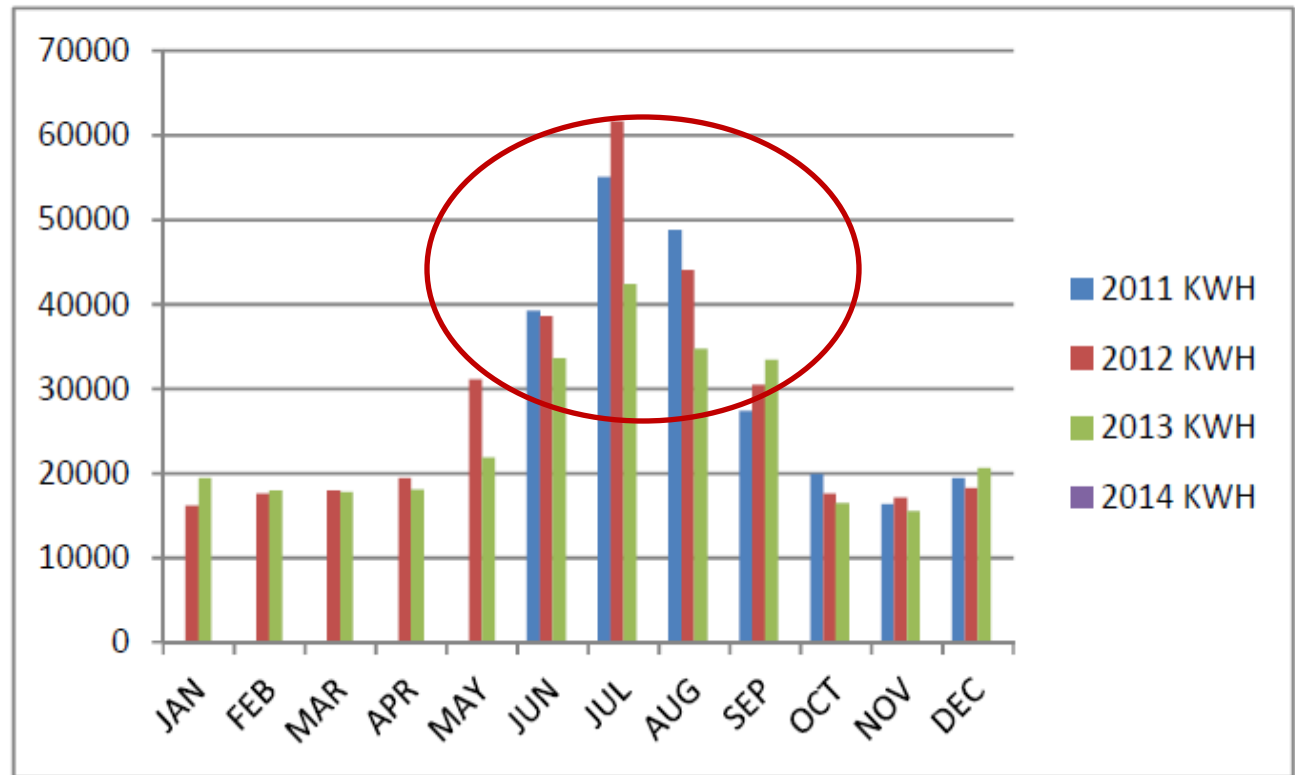


Energy Efficiency: Courthouse

New controls systems installed June 2013.

Even with 17% more heating and cooling days than 2012, we saw a decrease in energy usage, and saved \$5,876 in energy costs. Positive comments received from staff with regards to comfort.

Douglas County Courthouse Energy Usage





Sustainability and Energy Savings Reinvestment Fund

- Created in November 2011
- Initially seeded with \$300,000 (in equipment reserve) Available funds: \$173,000
- **Projects funded to date: 11**
- Priority for funding given to projects that:
 1. Reduce energy costs and operating expenses.
 2. Promote the implementation of innovative sustainability solutions.
 3. Demonstrate County's commitment to sustainability, stewardship, and conservation.



Energy Efficiency Projects Funded 2011 -2013

- Building 21 Lighting Retrofit (\$1,825)
- County Clerk: Epoll Books (\$220)
- Health Dept. LED lighting (\$892)
- KSU Extension Office Lighting Retrofit (\$600)
- Hybrid vehicle for Youth Services (\$1,150)
- Recycling bins at Fairgrounds Buildings (n/a)
- Exterior & parking lot lighting retrofit at YS (\$3,580)
- United Way Boiler Retrofit (\$3,400)
- Courthouse Controls Upgrade (\$11,000)
- Lonestar Marina 20 SEER Heat Pump (\$550)

(annual savings in parenthesis)

Total annual energy savings = \$16,326

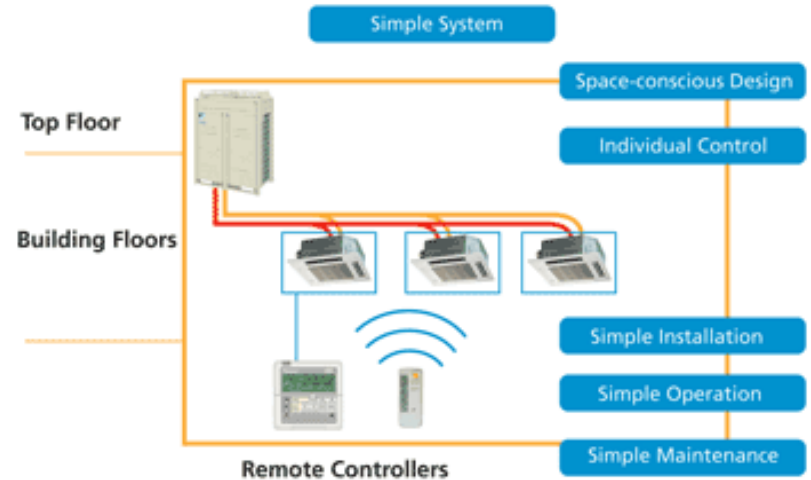


New Public Works Facility – LEED

Pursuing LEED certification,
potential for LEED Silver.

Key LEED opportunities:

- Water-efficient landscaping.
- HVAC system designed for energy efficiency.
- Construction waste management.
- Low-emitting materials for floors, paints, sealants.
- Educational program for visitors, building occupants.





Upcoming Energy Saving Initiatives:

- LED parking lot lights – for County Jail
- LED parking lot lights – for Courthouse lot
- Opportunities in 24 hour facilities (Jail, YS)
– identified by energy audits conducted fall 2013.
- Web-programmable thermostats
(Fairgrounds)



Waste Reduction Initiatives

- IT-created Printing Reduction Initiative & Tips.
- Countywide switch to 30% recycled content paper.
 - Switching from virgin paper to 30% recycled paper saves (annually):
 - 23 tons of wood (145 trees)
 - 67,000 gallons of water
 - 12,458 pounds of CO₂
- Countywide switch to remanufactured toner cartridges.
 - \$2,900 savings.



Waste Reduction Initiatives

- “Green” purchasing outreach to departments and partnership with Office Max:

<p>Currently buying this?</p>  <p>Post-It Pop-Up Notes - 12 Pack</p>	<p>Try this recycled product instead!</p> <p><u>You save:</u></p> <p>\$5.56</p>  <p>Post-It Recycled Note Pad - Value Pack</p>
--	--



Community Supported Agriculture (CSA) program for County employees

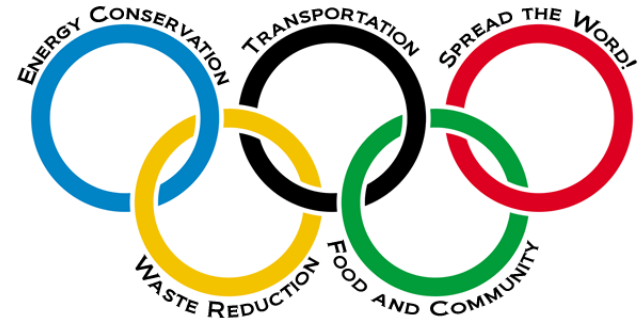
- May-October, 2013
- 45 County employee participants.
- Very high satisfaction with program – 80% plan to participate in 2014.
 - Cited support of the local economy and the opportunity to improve their family's health as key reasons for participation.





Douglas County Sustainability Team

- Green Games – April 2014
- Lunch ‘n Learn opportunities - ongoing
- Community Supported Agriculture – expanded locations?
- Paper Use Reduction Initiatives:
 - Online forms and website redesign.
 - Continued integration with existing county initiatives and functions (i.e. Wellness Committee, United Way, etc.)
- **New Projects:**
 - Landscaping practices & irrigation systems.
 - Public recycling bins for public-facing spaces in County buildings.
 - Recycling of batteries, new materials.





Douglas County Food Policy Council

- Created as a joint City-County Council in 2013.
- Received USDA and Kansas Health Foundation to initiate a food hub feasibility study.
- Improved Douglas County Incubator Kitchen Policies.
- Hosted 3rd annual Chefs Challenge at the Douglas County Fair.
- Supported the Health Department's Community Health Plan subcommittees and Healthy Communities Initiative.
- 3rd year of the Common Ground Program.



Vacant lot: 1313 Pennsylvania



Penn. St. Community Garden



Vacant lot: 830 Garfield



Lawrence Community Orchard



John Taylor Park



Garden Incubator at John Taylor Park



Vacant lot: 815 Oak



JCCC/CMEF Student Farm



Vacant Lot: 1304 Pennsylvania



PermaCommons Garden



Vacant Lot: 639 Illinois St.



Pearl Clark Community Garden



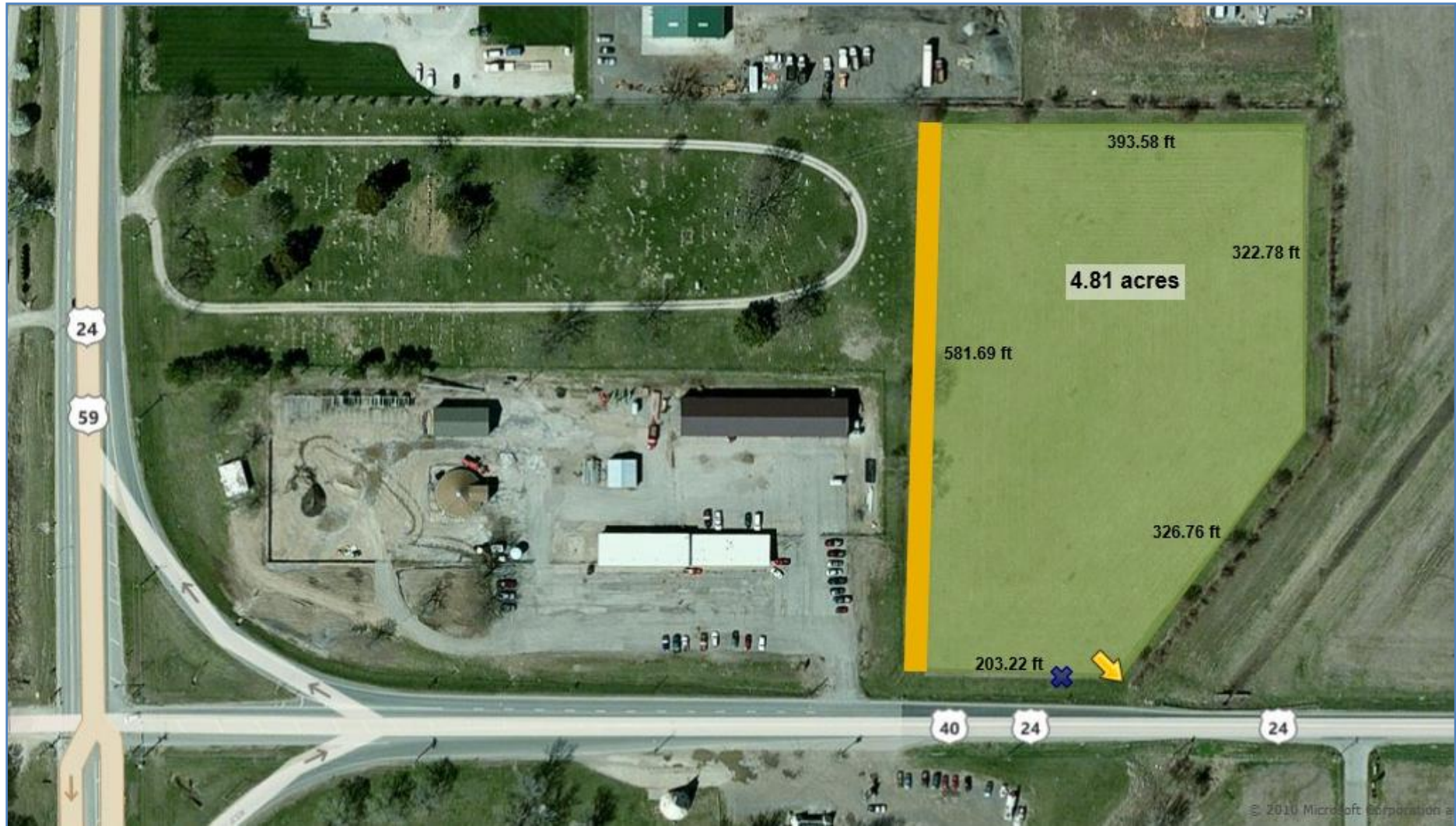
commonground
COMMUNITY GARDEN

Pearl Clark

QUESTIONS? CONTACT:
Michael Morley
785-218-5061



24/40 Hwy (adjacent KDOT & Maple Grove Cemetery)



TeePee Junction Incubator Farm



Common Ground 2013 Program Accomplishments:

Number of gardens/farms: **9**

Acres in food production: **5.6**

Number of gardeners/farmers: **120**

Number of classes/community work days: **54**

Number of volunteers/community participants: **463**

Pounds of donated produce: **2,000**

Common Ground Community Benefit Plan Partners:

Just Food

The Ballard Center

LINK

Trinity Episcopal Church

Lawrence Food Garden tour

Kaw Valley Seed Fair

Kaw Valley Permaculture Tour

Central Middle School



Energy Efficiency Community Outreach:



Are you ready to put some energy into your profits?

JOIN THE CITY'S
GREEN BUSINESS LEADERS PROGRAM

- Learn how to slash your energy costs with a FREE energy audit
- Make improvements to your building that will save money and energy
- Earn recognition as a Green Business Leader in your community

APPLY TODAY!

<http://www.lawrenceks.org/green-business-leaders>



Green Business Leaders Partners:



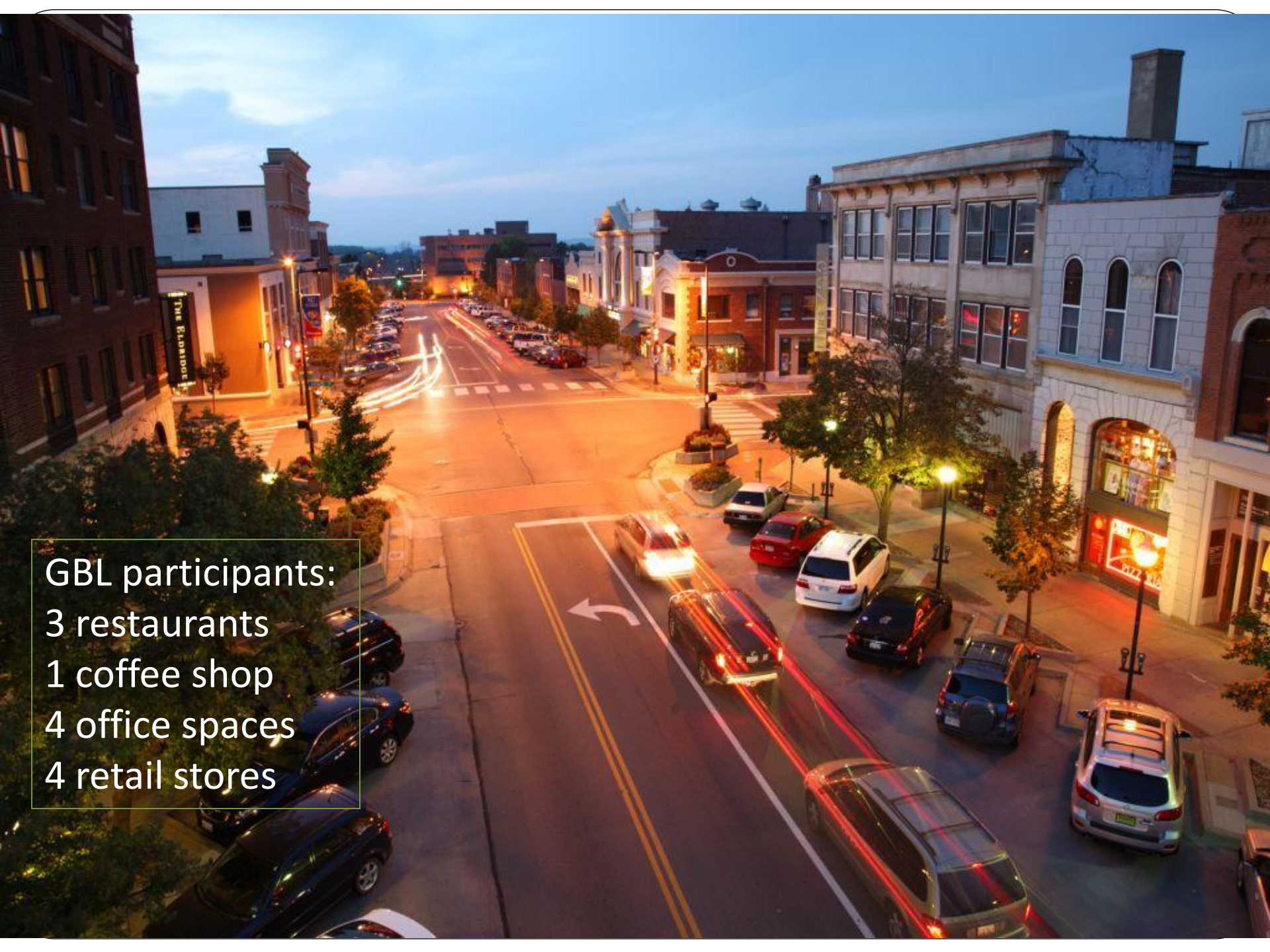
City of Lawrence



architects
engineers



DOWNTOWN
LAWRENCE, INC.
BUSINESS ASSOCIATION



GBL participants:
3 restaurants
1 coffee shop
4 office spaces
4 retail stores



Green Business Leaders Program Outline:

- **2 meetings** in early 2013 covered:
 - Business-friendly energy efficiency programs, rebates, and incentives.
 - Proven energy efficiency solutions: Lighting and HVAC quick-wins.
 - How to track your business's energy usage with SmartStar.
- **1 On-Site FREE Energy Audit from Westar and GBA.**
- **1 meeting after the energy audit** to share lessons learned from the audit and to plan energy improvement projects.
- **Recognition: Lawrence Business Magazine, City newsletter, ICLEI case studies**









Lessons Learned:

- Energy audit was key driver for participation.
- Ongoing support is needed to ensure that retrofits occur.
- Impact was significant:
 - \$23,000 annual savings
 - 244,000 kWh saved
 - Average payback of 2.5 years
- 2014: Rollout Countywide to all small businesses.

Douglas County Sustainability Goals

Douglas County will:



operations

- incorporate sustainable landscaping practices.
- continue to implement an organization-wide document management system to reduce paper waste.
- **reduce waste (priority order: reduce consumption, reuse existing equipment, recycle or buy recycled products)**
- incorporate sustainable practices into road operations.
- be more efficient with fuel consumption.



buildings

- **reduce energy consumption by 30% by 2015.** (2009 baseline)
- **strive to meet LEED standards for certification in new County buildings.**



employees

- create and deliver a sustainability employee education and action campaign.
- **encourage sustainability as a routine and normal practice for Douglas County employees.**



policies

- adopt policy to articulate that sustainability is a valued position.



community

- provide services to citizens in their homes when appropriate (i.e. online services).
- **facilitate community understanding of sustainability practices.**

Questions?