

## BOARD OF COUNTY COMMISSIONERS OF DOUGLAS COUNTY, KANSAS

### TUESDAY, JULY 15, 2014

Budget Hearings

8:30 a.m

#### CONSENT AGENDA

- (1) (a) Consider approval of Commission Orders; and
- (b) Consider approval of purchase of Noxious Weeds Chemical (Keith Browning)
- (c) Consider approval of Bituminous Frictional Sealing contract for Project No. 2014-12 (Keith Browning);
- (d) Consider approval to Acquisition of Easement for Drainage Structure Replacement; Bridge No. 00.26N-16.00E (Michael Kelly)

-Decisions by the Commission to direct staff on changes to recommended budget and authorization to publish.

-Adjourn

### WEDNESDAY, JULY 16, 2014 - canceled

### WEDNESDAY, JULY 23, 2014

4:00 p.m.

- Review and Approve the Multimodal Studies Project Final Reports (Jessica Mortinger, Transportation Planner)
- Presentation and consider approval of 2013 Audit (Sarah Plinsky)
- CUP-14-00167**: Consider a Conditional Use Permit for the expansion of Westar Energy's Baldwin Creek Substation on approximately 14.7 acres located at 1703 E 902 Rd. Submitted by Bartlett & West on behalf of Western Resources Inc, (aka Westar Energy, Inc.) property owner of record. (PC Item 4; approved 10-0) Mary Miller is the Planner.

.- Executive Session for the purpose of consultation with County Counselor on matters, which would be deemed, privileged under the attorney-client relationship. The justification is to maintain attorney client privilege on a matter involving Douglas County.

### WEDNESDAY, JULY 30, 2014: 6:35

-Neighborhood Revitalization Act project for 1106 Rhode Island and 1101/1115 Indiana Street (Diane Stoddard)

### WEDNESDAY, AUGUST 6, 2014

### WEDNESDAY, AUGUST 13, 2014

### THURSDAY, AUGUST 14, 2014

-9:00 a.m. – Primary Election Canvass

### WEDNESDAY, AUGUST 20, 2014

### WEDNESDAY, AUGUST 27, 2014

### THURSDAY, NOVEMBER 13, 2014

-9:00 a.m. – General Election Canvass

*Note: The Douglas County Commission meets regularly on Wednesdays at 4:00 P.M. for administrative items and 6:35 P.M. for public items at the Douglas County Courthouse. Specific regular meeting dates that are not listed above have not been cancelled unless specifically noted on this schedule.*



## DOUGLAS COUNTY PUBLIC WORKS

1242 Massachusetts Street  
Lawrence, KS 66044-3350  
(785) 832-5293 Fax (785) 841-0943  
dgcopubw@douglas-county.com  
www.douglas-county.com

**Keith A. Browning, P.E.**  
Director of Public Works/County Engineer

---

### MEMORANDUM

To : Board of County Commissioners

From : Keith A. Browning, P.E., Director of Public Works/County Engineer  
Doug Stephens, Operations Division Manager

Date : July 7, 2014

Re : Consent Agenda approval of purchase of Noxious Weeds chemical

On April 2, 2014 the Board of County Commissioners approved a contract to purchase 250 gallons of PastureGard HL. This chemical is used to control field bindweed, Sericea Lespedeza, and musk thistle along County right of way, and is sold to the public at a discounted rate for treatment of noxious weeds on private land.

Due to the amount of noxious weeds found this year our current supply is running low. We request permission to purchase 240 gallons of PastureGard HL to supplement our existing supply. We received quotes from two suppliers:

Van Diest Supply Company, \$94.89/gallon, total \$22,773.60

Lone Pine Ag Services, \$95.20/gallon, total \$22,848.00

Lone Pine Ag Services is a local company who allows us flexibility in ordering and receiving chemicals. They will deliver the chemical in separate shipments, if requested. Given the \$74.40 difference in the two bids and the higher level of service from the local company, we request purchasing the chemicals from Lone Pine.

Sufficient funds exist in the Noxious Weeds budget, Line Item 70660 to purchase this material.

Action Required: Consent Agenda approval to purchase 240 gallons of PastureGard HL from Lone Pine Ag Services for \$95.20/gallon (total \$22,848.00).



## DOUGLAS COUNTY PUBLIC WORKS

1242 Massachusetts Street  
Lawrence, KS 66044-3350  
(785) 832-5293 Fax (785) 841-0943  
dgcopubw@douglas-county.com  
www.douglas-county.com

**Keith A. Browning, P.E.**  
Director of Public Works/County Engineer

---

### MEMORANDUM

To : Board of County Commissioners

From : Keith A. Browning, P.E., Director of Public Works/County Engineer

Date : July 10, 2014

Re : Consent Agenda approval of Bituminous Frictional Sealing contract  
Project No. 2014-12

We opened bids July 8 for applying a bituminous frictional seal to two miles of roads. One mile is located on Route 1045 from N2000 Rd to N2100 Rd, and the second mile is located in Quantril Acres subdivision. Bituminous frictional seal is a type of treatment system similar to chip seal. It utilizes a distributor spray truck to place the material on the road. This material has a mixture of asphalt emulsion, angular fine aggregates, recycled material, polymers, and catalysts.

We received the following two bids (see attached bid tabulation):

<u>Bidder</u>	<u>Total Bid</u>
Vance Brothers, Inc.	\$44,400.00
Circle C Paving	\$46,900.00
<i>Engineer's Estimate</i>	<i>\$44,900.00</i>

Road & Bridge Fund 201 includes \$1,260,000 for seals, and the CIP includes \$500,000 for annual contract maintenance projects.

Given that bituminous frictional sealing is new to this department, and the relatively low contract amount, we request you authorize me to approve change orders totaling up to 10% of the contract amount. This will allow for any unanticipated quantity changes due to conditions at the time of the work.

Action Required: Consent Agenda approval of a contract with Vance Brothers, Inc. in the low-bid amount of \$44,400.00 for Project No. 2014-12, bituminous frictional sealing of approximately two road miles, and authorization for the Public Works Director to approve change orders up to 10% of the contract amount

DOUGLAS COUNTY PUBLIC WORKS  
 PROJECT 2014-12/BID NO. 14-F-0016  
 DESCRIPTION: BITUMINOUS FRICTIONAL SEALING (ONYX)  
 BID TABULATION  
 July 8, 2014

ITEM #	DESCRIPTION	APPROX QUANTITY	UNIT	ENGINEER'S ESTIMATE		VANCE BROTHERS		CIRCLE C PAVING		UNIT COST	AMOUNT
				UNIT COST	AMOUNT	UNIT COST	AMOUNT	UNIT COST	AMOUNT		
1	Bituminous Frictional Sealing	29,520	S.Y.	\$1.25	\$36,900.00	\$1.25	\$36,900.00	\$1.25	\$36,900.00		
2	Traffic Control	1	L.S.	\$5,000.00	\$5,000.00	\$5,000.00	\$5,000.00	\$5,000.00	\$5,000.00		
3	Mobilization	1	L.S.	\$3,000.00	\$3,000.00	\$2,500.00	\$2,500.00	\$5,000.00	\$5,000.00		
<b>TOTAL BID -</b>					<b>\$44,900.00</b>		<b>\$44,400.00</b>		<b>\$46,900.00</b>		

Keith A. Browning, PE, Director of Public Works

Date:

Jaime Shew, Douglas County Clerk



## DOUGLAS COUNTY PUBLIC WORKS

1242 Massachusetts Street  
Lawrence, KS 66044-3350  
(785) 832-5293 Fax (785) 841-0943  
dgcopubw@douglas-county.com  
www.douglas-county.com

**Keith A. Browning, P.E.**  
Director of Public Works/County Engineer

---

### MEMORANDUM

TO : Board of County Commissioners

FROM : Keith A. Browning, P.E., Director of Public Works  
Michael D. Kelly, P.S., County Surveyor

DATE : July 10, 2014

RE : Drainage Structure Replacement; Bridge No. 00.26N – 16.00E  
Acquisition of Easement; Consent agenda

A project has been designed to replace a deficient drainage structure located 0.25 mile north of the Franklin County line on E1600 Road. Plans were developed in-house and negotiations with the pertinent landowners for permanent and temporary easement have been completed.

While the culvert is small enough to be Palmyra Township's maintenance responsibility they do not have the equipment needed for the project. This is due to the extreme nature of the terrain as well as the large size of the replacement structure.

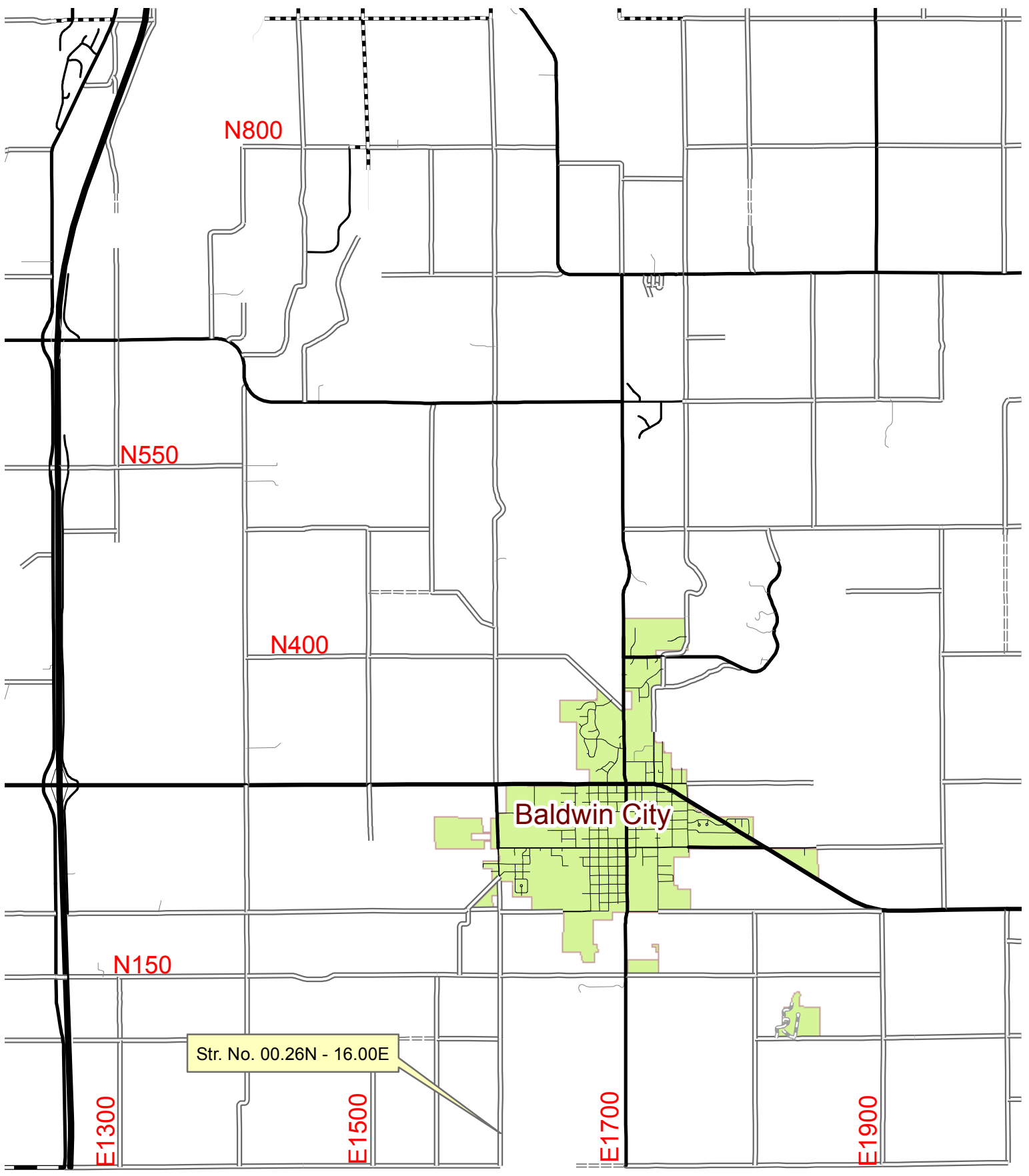
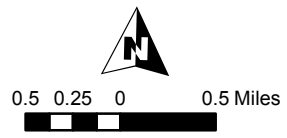
Construction is planned for Fall 2014 and will be accomplished using county personnel.

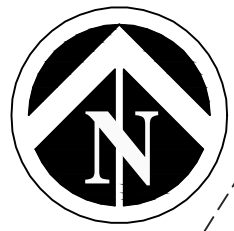
To ensure the proper completion of a necessary construction project approval is recommended for the attached CONTRACT FOR HIGHWAY PURPOSES.

**ACTION REQUIRED:** Consent agenda approval to authorize Nancy Thellman to affix her signature to the CONTRACT FOR HIGHWAY PURPOSES for Drainage Structure No. 00.26N – 16.00E.

# General Location Map

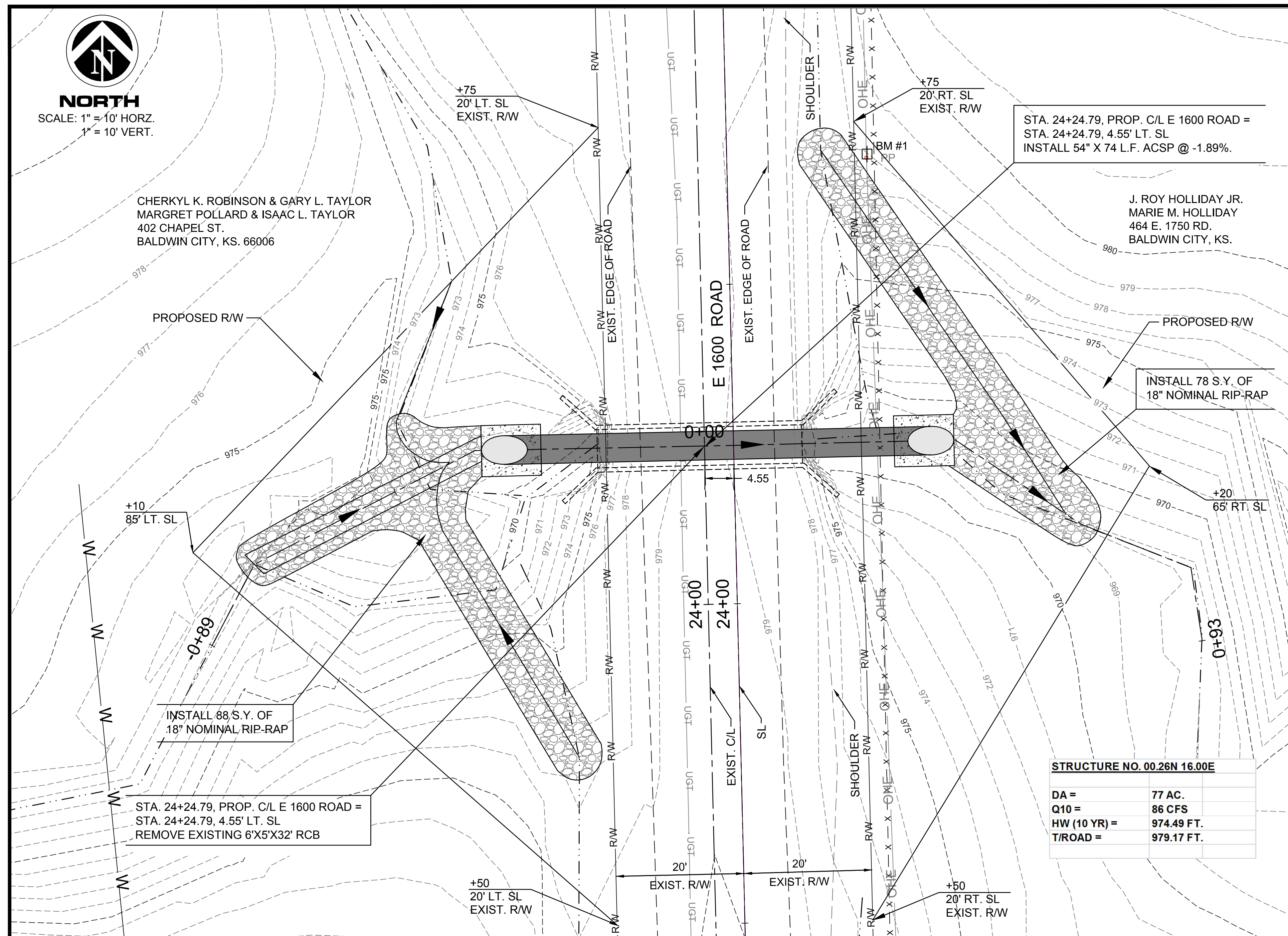
## Str. No. 00.26N - 16.00E





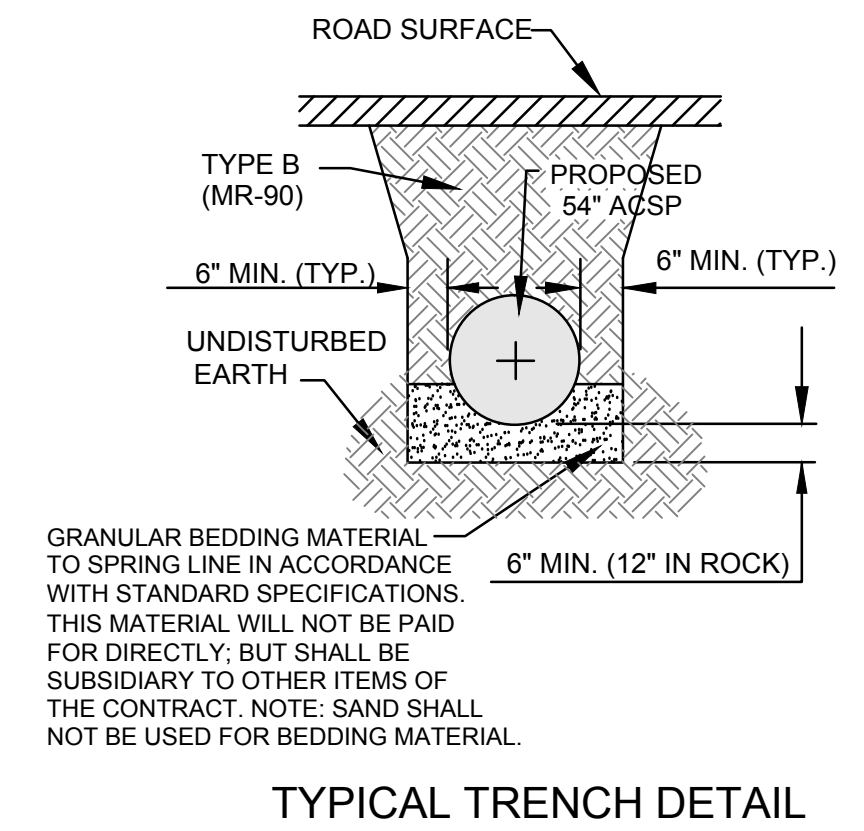
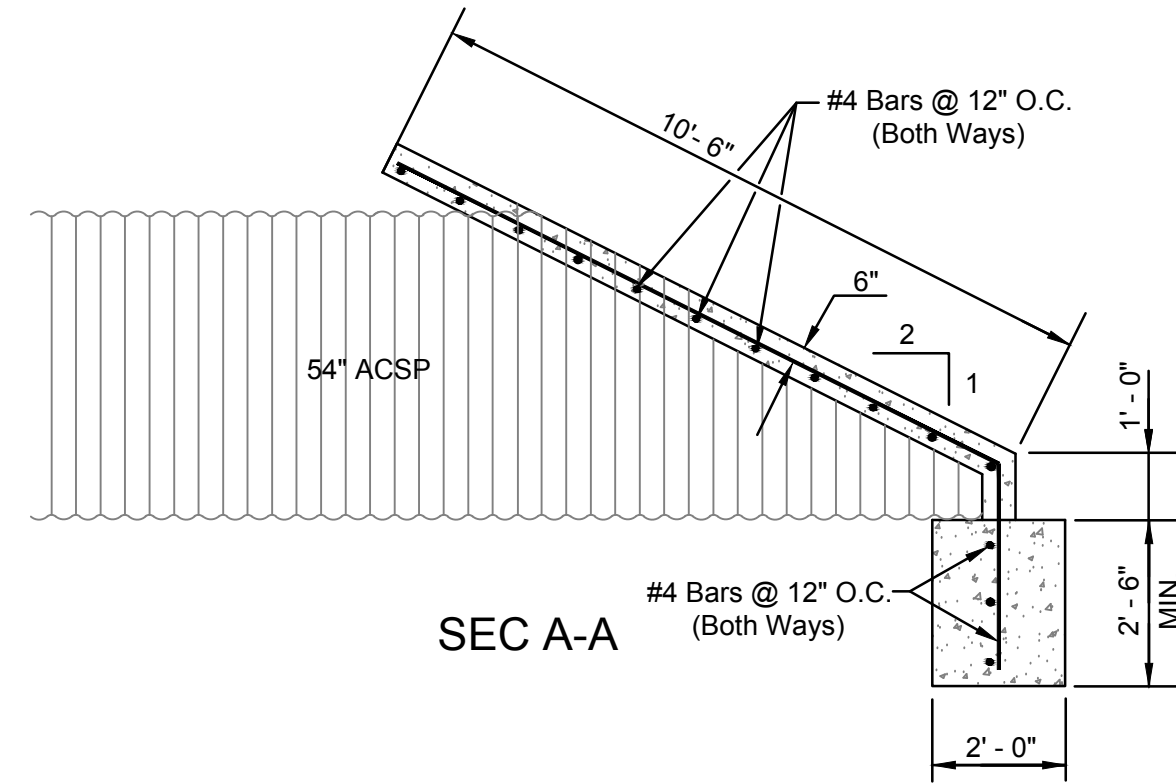
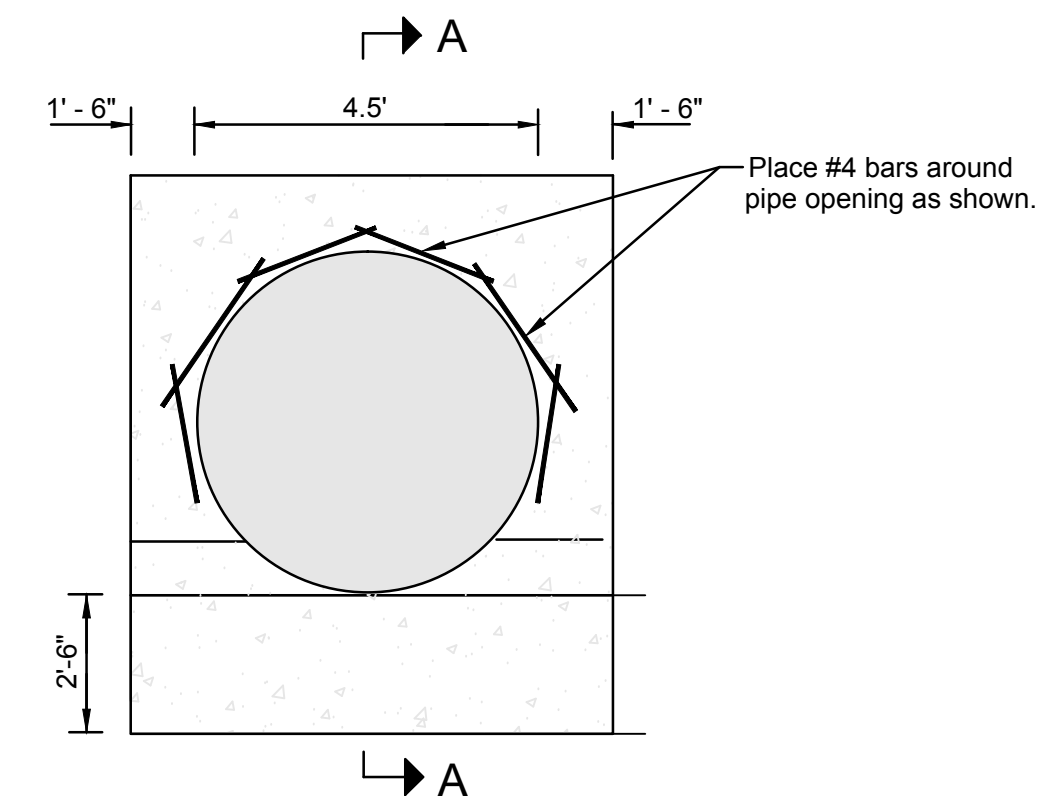
**NORTH**  
SCALE: 1" = 10' HORIZ.  
1" = 10' VERT.

CHERYL K. ROBINSON & GARY L. TAYLOR  
MARGRET POLLARD & ISAAC L. TAYLOR  
402 CHAPEL ST.  
BALDWIN CITY, KS. 66006



**STRUCTURE NO. 00.26N 16.00E**

DA =	77 AC.
Q10 =	86 CFS
HW (10 YR) =	974.49 FT.
T/ROAD =	979.17 FT.



**SECTION CORNER INFORMATION**

STATION	SECTION CORNER	R/CODE	SECTION CORNER COORDINATE	ELEVATION	CORNER STATUS
36+72.43	1/4 WL SEC. 16-T15-R20	Y09L	N: 162564.215 E: 2109472.39	1019.37	RECORD
10+00	NW CORNER SEC. 21-T15-R20	Y09N	N: 159892.546 E: 2109536.122	1012.04	RECORD

**UTILITY OWNERS**

COMPANY NAME	PHONE NUMBER
RWD 5 FRANKLIN COUNTY	(785)248-6744
KCP&L	(866)861-7678
CENTURYLINK (FRMLY EMBARQ)	(888)847-4757

STA. 24+69.79 - 21.93' RT.  
B.M. # 1 = SPK. IN P.P.  
N. 161362.454  
E. 2109522.112  
ELEV = 980.40

**CHECKED BY:**

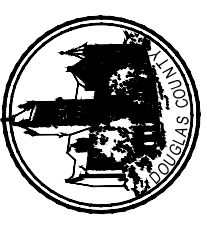
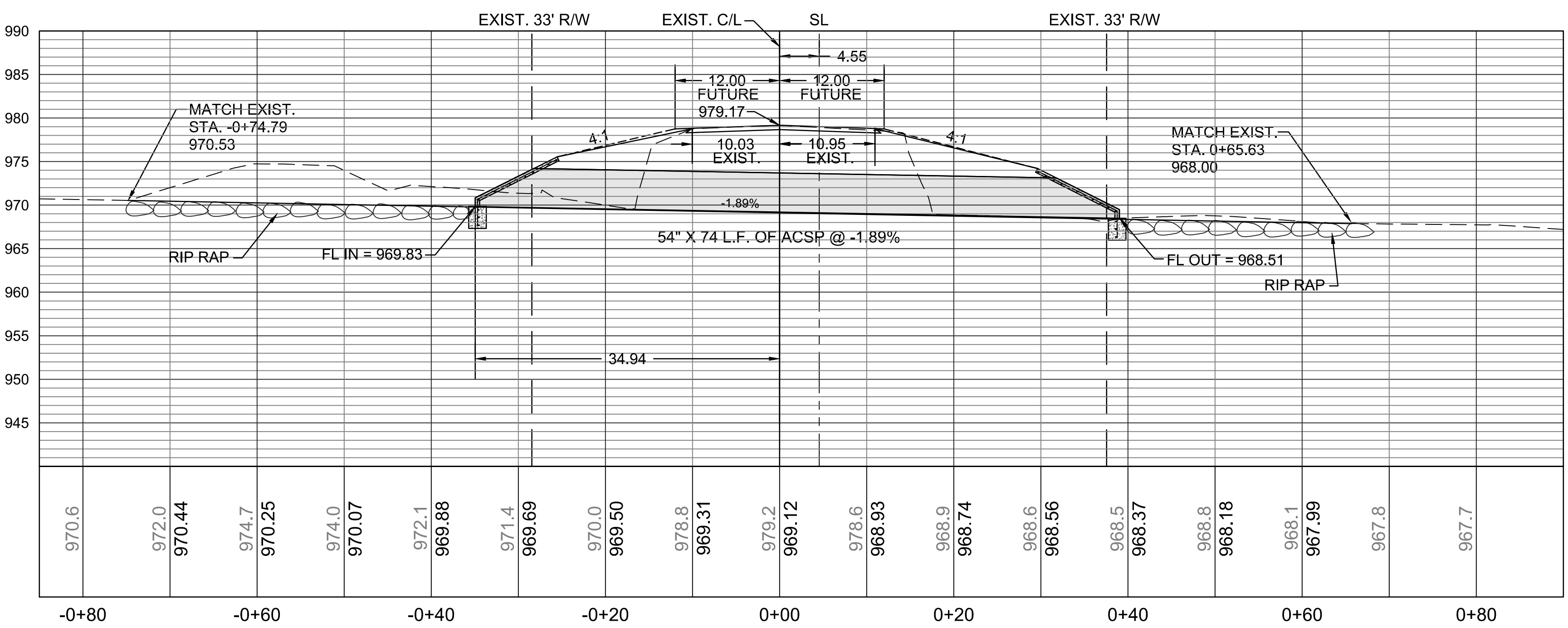
TERESE A. GORMAN, P.E.  
ENGINEERING DIVISION MANAGER

DATE

**APPROVED BY:**

KEITH A. BROWNING, P.E.  
DOUGLAS COUNTY PUBLIC WORKS DIRECTOR

DATE



Project: ROAD RECONSTRUCTION AND STORM DRAINAGE  
Project No.: 0021000  
Drawn By: J.H.  
Designed By: A.S.  
Checked By: T.G.  
Date: 9/2012